



DHOLLANDIA



POCKET GUIDE
PRODUCT RANGE 2012



DHOLLANDIA

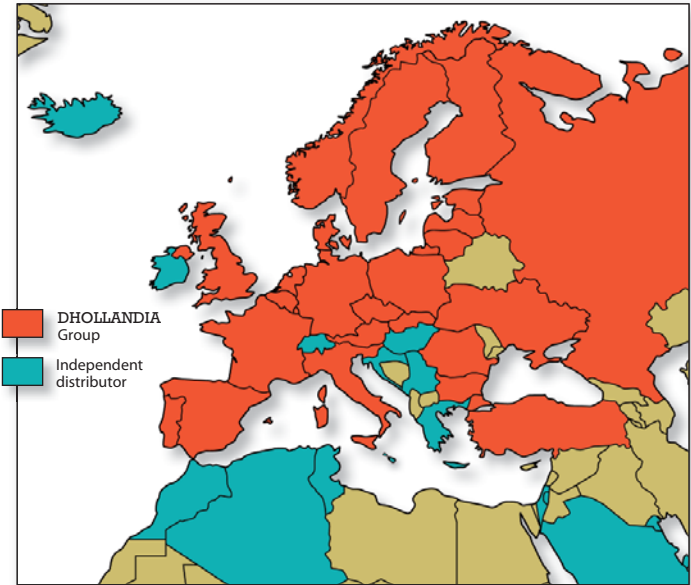
**POCKET GUIDE
PRODUCT RANGE 2012**

Content list

DHOLLANDIA facts & figures	Pg 3
6 good reasons to buy DHOLLANDIA	Pg 4
Control units for all applications...	Pg 6
... and an endless options list to adapt the lift to your individual needs	Pg 7
Protection PLUS for longer durability	Pg 8
Professional service network	Pg 9
Original spare parts	
Reading help	Pg 10
Chapter 1 • Passenger lifts	Pg 12
Chapter 2 • Lifts for factory built panel vans	Pg 34
Chapter 3 • Cantilever lifts	Pg 58
Chapter 4 • slider lifts	Pg 88
Chapter 5 • Tuck-away lifts	Pg 112
Chapter 6 • Special hydraulic applications	Pg 122
Chapter 7 • Column lifts	Pg 136

DHOLLANDIA facts & figures

- Founded in 1968, more than 43 years of experience in the tail lift business
- European manufacturer N° 1 of tail lifts, with production of more than 28.000 units per year, and more than 450.000 units sold since 1968
- Unparalleled product range with lift capacities ranging from 150 to 16,000kg, all developed via internal growth
- Production sites in 5 countries
- Extensive vertical integration and technological leadership: more than 90% of mechanical, hydraulic and electrical parts used are manufactured in-house
- Professional network of DHOLLANDIA Area Sales & Service Centres (Europe) and independent distributors (outside Europe) in 6 continents, and more than 50 countries worldwide



See www.dhollandia.com for our worldwide network.



6 good reasons to buy DHOLLANDIA



1- Safe & reliable

- No electronic components, less susceptible to failure
- Adapted to the intensive use and heavy duty circumstances
- Strong & robust 4-cylinder tail lifts (*)
- Electrical safety valves mounted to all cylinders (*)
- Manual emergency operation on all electric valves
- Automatic tilt to ground level (*)



2- Flexible & client-oriented

- Small enough to care, big enough to cope
- Wide range of standard products ranging from 150 to 16,000 kg
- Also perfectly geared up to develop and manufacture tailor-made products and creative client-oriented solutions



3- Superior finish

- Low maintenance bearings and grease nipples in all critical articulation points
- Piston rods in hard-chromed stainless steel for all cylinders exposed to adverse weather conditions
- Optimum paint finish with PROTECTION PLUS on the principal steel components



4- Economic & budget friendly

- Optimum price-quality ratio
- Lifts designed to allow easy maintenance
- Attractive spare parts prices and low maintenance costs
- Longer life-time and durability



5- Strong environmental focus

- Use of Best Available Techniques in surface treatment and waste water treatment
- Use of rain water for industrial purposes
- Application of wind and solar energy to power manufacturing processes
- Maximum elimination of lost packaging material
- Biologically degradable oil promoted as option
- ISO 14001 certified



6- The safe and clever buy

- Professional service network in the whole of Europe and beyond
- More than 450.000 units sold are the proof of customer satisfaction and loyalty
- Preferred choice of many transport companies, fleet-owners, rental companies and body builders across Europe

(*) Generic characteristics for most types of commercial lifts

Control units for all applications...



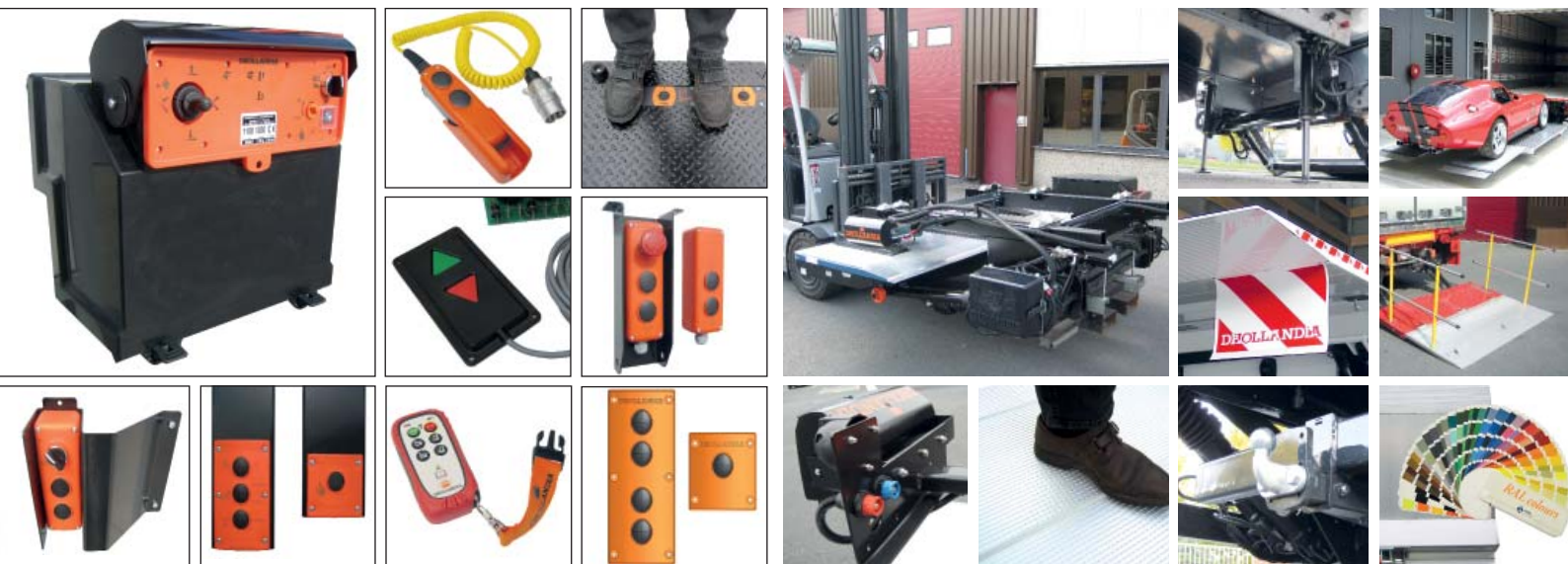
DHOLLANDIA offers a wide variety of different control units to suit particular lift models, special applications, and the client's individual requirements: exterior control boxes, interior controls, wander leads with spiral cable, foot controls, control units with emergency cut-out switch, wireless controls, etc... Instructions for mounting and risk analysis are available in the mounting instructions.

... and an endless option list to adapt the lift to your individual needs

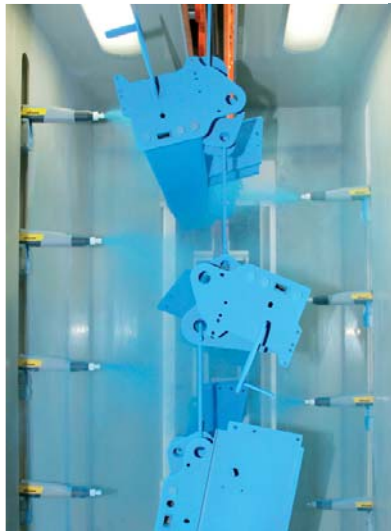


DHOLLANDIA's product range also offers an almost endless list of electrical, hydraulic and mechanical options to fine-tune the lift to the client's individual requirements.

The most popular options concern: platform lights & flags, electric controls, battery systems, roll-stops, safety rails and fall protection, quick-mounting solutions, hydraulic stabilising legs, platform finish & anti-slip protection, etc...



Protection PLUS for improved durability



DHOLLANDIA's **Protection PLUS** paint finish combines innovative technologies to raise the quality and corrosion protection of its tail lifts to the highest level.

Protection PLUS is applied to all main steel components, and incorporates 4 important steps

1. Shot blasting of the steel substrate
2. 3-kation zinc phosphate
3. KTL epoxy electro coating (KTL = Katodische Tauch-Lackierung)
4. Polyester powder top coat

GALVA FINISH

Although Protection PLUS is already performing well above the average finish level in the tail lift industry, **DHOLLANDIA** offers galvanised finish as an option for its most demanding customers.

Professional service network Original spare parts



DHOLLANDIA spare parts =

100% original

100% reliable

100% compatible

DHOLLANDIA lifts are being distributed in more than 50 countries worldwide, through a dedicated and professional network of DHOLLANDIA Area Sales & Service Centres, and official independent distributors.

Each of these country distributors holds substantial stock of lifts and original spare parts, and can support clients with:

- commercial and technical advice
- maintenance, repair and road-side assistance
- fitting and fitting assistance
- training on any of the subjects above, and operator training

Reading help

Lift capacity

Hydraulic tail lifts are not designed to LIFT / LOWER weights corresponding to their nominal capacity over the full surface of the platform. The nominal capacity is valid at a certain distance or **centre of gravity**, measured behind the rear of the vehicle body. Behind that centre, that is marked on the platform, the maximum safe working load of any brand of tail lifts diminishes according to specific load diagrams supplied with the lift.

Since lifts are being sold in many capacities and with various centres of gravity, it may seem a difficult task to make an objective comparison. Therefore, the concept **load moment** combines the nominal lift capacity with the applicable centre of gravity. It allows to compare the total performance of the machine, and to get some appreciation of its ability to endure heavy duty conditions over a longer time period.

Load moment = lift capacity x centre of gravity

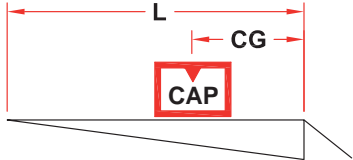
Example: 2 lifts with identical capacity but different centre of gravity

Type: DH-LM.20 :

CAP	CG	LM
1500 kg	750 mm	11.25 kNm
2000 kg	750 mm	15 kNm



2000 kg x 750 mm
20 kN x 0.75m = 15 kNm



LM = CAP x CG

Type: DH-LM.30 :

CAP	CG	LM
1500 kg	1000 mm	15 kNm
2000 kg	1000 mm	20 kNm
2500 kg	1000 mm	25 kNm
3000 kg	1000 mm	30 kNm



CAP = nominal lift capacity
CG = centre of gravity
LM = load moment = CAP x CG

Units of measurement

Unless stated otherwise within the text, all weights are expressed in kg, and all dimensions in mm.

Weight indications of the lifts

Weights:

STEEL platform	
1750 mm	? kg
2000 mm	? kg

ALU platform	
1800 mm	? kg
2000 mm	? kg

DHOLLANDIA lifts are available with a wide choice of different lift arms, lift frames and mounting plates, to allow integration to a wide variety of vehicles in optimum circumstances. Furthermore, most lifts are available with different platform designs, and a long list of options to adapt the lift to the client's individual needs.

As a consequence, the weights mentioned in our sales literature are indicative, and must be read : "from ... kg onwards". The real weights might vary according to the type of vehicle, and the execution of the lift. Ask your national DHOLLANDIA distributor for further detail.

Voltage

Unless stated otherwise within the text, all systems mentioned are designed for 12V - 24V commercial vehicles. Other voltage systems are available on request.

Half width platforms, foldable platforms

All types of cantilever lifts (see chapter 3) are available with the standard platform, covering the full width of the vehicle body. But certain types are also available with half width or partial width platforms, and vertically foldable platforms.

This possibility is indicated as follows:



Full width platform available



Half / partial width platform available



Half width frame + foldable platform available



Half / partial width platform not available



Half width frame + foldable platform not available



Passenger lifts



1



→ Passenger lift for Multi Passenger Vehicles, minibuses and ambulances

DH-PH1.03 • 300 kg



The DH-PH1 is a **linear 1-arm lift**, suitable for mounting inside the rear or side doors of a wide range of Multi Passenger Vehicles, mini-buses, and ambulance vehicles.

In its standard configuration, the DH-PH1 has its travel position just inside the doors of the vehicle. As an option, it can be equipped with an **articulated frame**, that allows to stow the platform against the side of the body, keeping the access through the vehicles doors completely free.

The DH-PH1 can be mounted at the rear doors or at the side door; at the left or right side in the door aperture.

Lift capacity

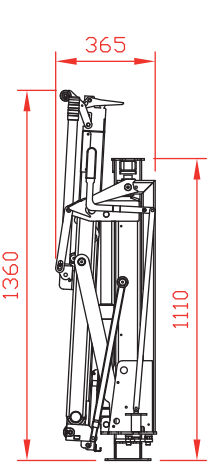
CAP
300 kg

Weights [see pg. 11]

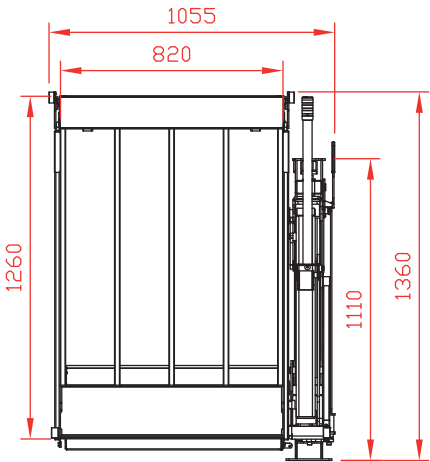
	Standard	S959
1260 mm	123 kg	139 kg

Step-in model, easy to use and flexible

S959 in travel position
mounted right side



S959 in work position
mounted right side



Fitting dimensions

ARM	600	700
K max.	700	950

Technical specifications

Lift frame	<ul style="list-style-type: none">• 1 lift arm• Standard = fixed frame: the closed platform stands in the door aperture• Option S959 = articulated frame: the platform can be stowed in a travel position against the side of body
Cylinders	1 lift cylinder
Automatic tilt at ground level	Not needed, flat platform
Platform details	<ul style="list-style-type: none">• Reinforced platform in meshed steel• Automatic roll-stop at the rear edge of the platform• Automatic bridge plate and toe-guard at the front edge of the platform
Safety rails	1, folding automatically
Standard platform depths	1080 - 1170 - 1260 mm Other depths on request (S958.L)
Standard platform widths	820 standard / 720 optional (S958.W)
Standard control unit	2-button remote control with spiral cable (S001)



→ Passenger lift for Multi Passenger Vehicles, minibuses and ambulances

DH-PH2.05 • 350 - 500 kg



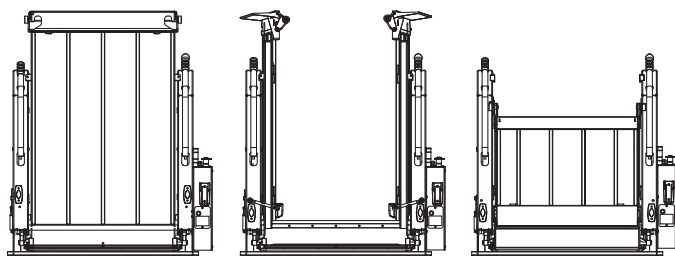
The DH-PH2 belongs to a new generation (2010-...) of **fully automatic linear passenger lifts**. It is suitable for mounting inside the rear doors of a wide range of Multi Passenger Vehicles, minibuses, and ambulance vehicles.

The reinforced construction with 2 lift arms provides maximum platform stability. It increases the safety and sense of safety of the wheelchair passenger and the lift operator.

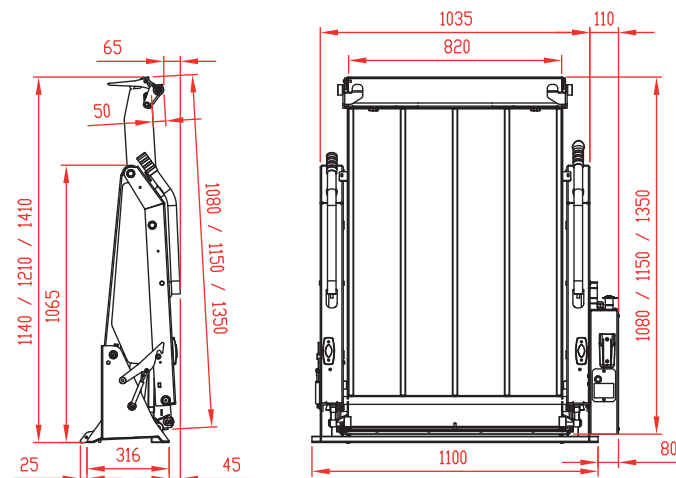
Standard

Option S953

Option S957 (*)



Safe, reliable and comfortable lift with 2 lift arms



Fitting dimensions

ARM	700
K max.	900

Lift capacity

CAP
350 kg
500 kg

Weights [see pg. 11]

Meshed steel	
1350 x 820	138 kg
1150 x 820	134 kg
1080 x 820	132 kg
S953	+10 kg
S957	+6 kg

Technical specifications

Lift frame	2 lift arms
Cylinders	2 lift cylinders
Automatic tilt at ground level	Not needed, flat platform
Platform details	<ul style="list-style-type: none">Reinforced platform in meshed steelAutomatic roll-stop at the rear edge of the platformAutomatic bridge plate and toe-guard at the front edge of the platform
Safety rails	2, left & right, folding automatically
Standard platform depths	1080 - 1150 - 1350 mm Other depths on request (S958.L)
Standard platform widths	820 standard / 920 optional (S958.W)
Standard control unit	2-button remote control with spiral cable (S001) 3-button (S962) or 4-button (S962.B) control as an option

(*) Consult DHOLLANDIA re. availability of option S957 in the following countries: Germany, Denmark, Italy, Spain, Great-Britain



→ Passenger lift for Multi Passenger Vehicles, mini- and midi buses and ambulances

DH-CH001.03 • 300 kg



The passenger lift DH-CH001 stows neatly in a sealed cassette box under the loading floor of the vehicle. This solution keeps the **access through the rear doors free**, and **occupies no space inside the vehicle**.

The DH-CH is **retracted hydraulically**, the platform point, bridge plate and safety rails are deployed by hand.

Its slim platform (only 20 mm thick) enables wheelchair passengers to embark and disembark with minimal effort.

The cassette is equipped with a full width **aluminium step** with anti-slip profiling, helping operators to step in and out of the vehicle safely.

Lift capacity

CAP
300 kg

Weights [see pg. 11]

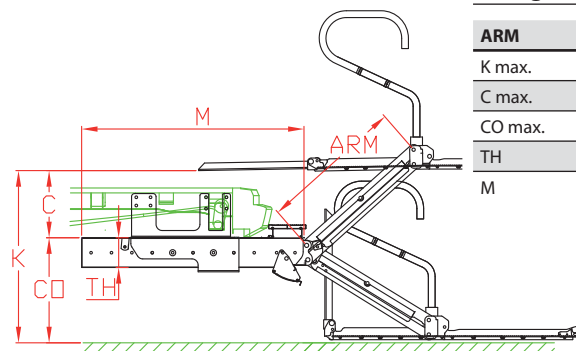
Alu / Alu
1280x800 mm 155 kg

Handy to have on board, for the occasional use



Fitting dimensions

ARM	700
K max.	850
C max.	350
CO max.	500
TH	145
M	1090



Technical specifications

Lift frame	2 lift arms
Cylinders	2 lift cylinders + 2 fixed stabilisers
Retraction in / out	Hydromotor + gear wheel system
Automatic tilt at ground level	Not needed, flat platform
Platform details	<ul style="list-style-type: none"> Steel frame + alu infill profiles Automatic roll-stop at the rear edge of the platform Bridge plate and toe-guard at the front edge of the platform
Safety rails	2, left & right, folding manually
Standard platform dimensions	1280 x 800 mm
Standard control unit	3-button remote control with spiral cable (S002)



→ Passenger lift for minibuses and ambulances

DH-LSPH.05 • 500 kg



The DH-LSPH responds to the growing demand for more **robust passenger lifts** with **higher capacity** and **increased platform surface**.

The spacious platform is manufactured from meshed steel, to evacuate rain water, snow, dirt,... very quickly off the platform surface. At the rear end, a 100 mm high **automatic roll-stop** prevents the wheelchair from unintentional rolling off the platform. As an option, the platform can be galvanised, and equipped with **safety rails**, foot controls, and platform lights.

Adapted **bolt-on mounting plates** are available for most types of minibuses, to enable quick and easy fitting.

Lift capacity

CAP
500 kg

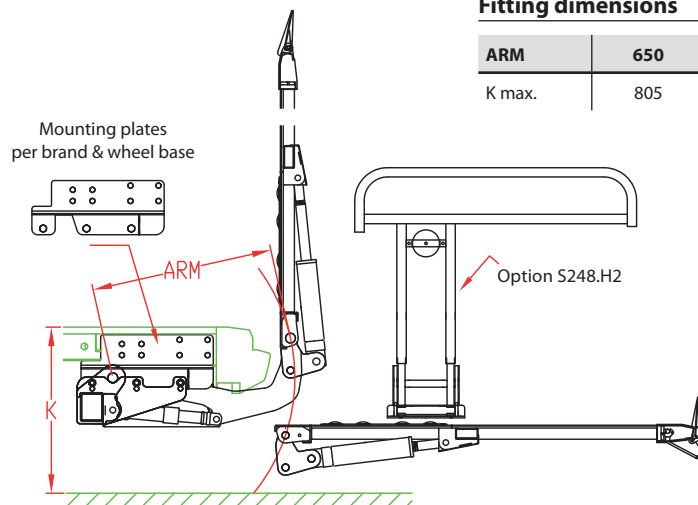
Weights [see pg. 11]

Meshed steel
1500 mm 190 kg

Heavy duty lift for taxis and ambulances

Fitting dimensions

ARM	650
K max.	805



Technical specifications

Lift frame	100 x 80 mm
Cylinders	2 lift cylinders + 1 tilt cylinder
Automatic tilt at ground level	Yes, with hydraulic memory cylinder
Platform construction	<ul style="list-style-type: none">• Meshed steel, powder coated RAL 9010 white as standard, galvanised as option (S626.PLSP)• Automatic roll-stops 100 mm high
Safety rails	Option S248.H2: 2 rails, left & right, folding manually
Standard platform depths	Steel : 1500 mm Other depths on request (S203)
Standard platform widths	1300 mm Other widths on request (S260)
Standard control unit	3+1 button panel control (S094.3+1.Z) + battery isolator switch (S097.A)

Special mounting brackets are available for:

- Citroën Jumper / Relay
- Peugeot Boxer
- Fiat Ducato
- Renault Master FWD / Trafic
- Ford Transit
- Opel Movano FWD / Vivaro
- Iveco Daily
- Volkswagen Crafter / LT
- Mercedes Sprinter
- Nissan Interstar / Primastar



→ Passenger lift for minibuses, midibuses, coaches and ambulances

DH-VZH.03 • 300 kg



The interior column lift DH-VZH is designed to suit a wide range of Multi Passenger Vehicles, minibuses, coaches, trains, ...

In its travel position, the platform is **stowed against the side panel** of the vehicle. Upon use, the lift frame is turned to a work position outside the vehicle. Then the platform is opened, and the safety rail and bridge plate are deployed, all by hand. The hydraulic lift functions are operated by means of 2 buttons integrated in the lift column.

The standard platform is made of 1 single section. **Foldable platforms** (option S719) are available for vehicles with insufficient door aperture, or in order to increase the overall useful platform surface.

Lift capacity

CAP

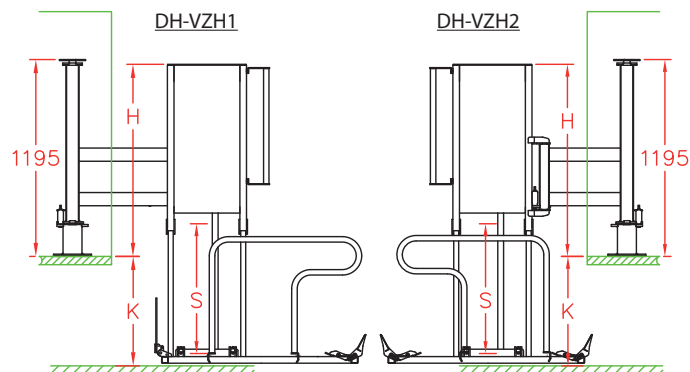
300 kg

Weights [see pg. 11]

Meshed steel

860x1200 mm | 155 kg

Column lift with free access through the doors



Fitting dimensions

Stroke S	750	1150 (1)	1550 (2)
K max.	700	1100	1500
H	1165	1565	1965

(1) Option S716 (2) Option S717

Technical specifications

Lift frame	<ul style="list-style-type: none">Column lift with single pillarVZH1: frame with 1 articulation point. In work position the platform stands right behind the bodyVZH2: frame with 2 articulation points. The platform can pivot towards the pavement
Cylinders	1 lift cylinder
Automatic tilt at ground level	Not needed, flat platform
Platform details	<ul style="list-style-type: none">Platform in meshed steelVZH1: hinged bridge plate at the front edge of the platformVZH2: platform in 1 single sectionMechanical roll-stop at the point
Safety rails	1, folding manually
Standard platform dimensions	VZH1: 860x1200 mm • VZH2: 860x1200 mm Other dimensions (S718) & foldable platforms (S719) available on request
Standard control unit	2-button control integrated in the lift column



→ Passenger lift for ambulances

Ambulance lifts 500 - 1000 kg



Flexible solutions to suit special customer requirements

DHOLLANDIA is a lift manufacturer in the true sense of the word: more than 90% of the components used on our lifts, are manufactured and assembled in-house.

Our powerful production apparatus and our premium **flexibility** enables us to develop and offer **creative client-orientated solutions**.



Our product portfolio contains a wide variety of realisations for the handling of wheelchairs, hospital beds, stretchers, bariatric stretchers etc...

These ambulance lifts are available as **full-width** platform, **half-width** platform, full-width platform with a **folding section** to leave the access through one door free, with (telescopic) **safety rails**, special **roll-stop** designs etc...

Upon realisation of each project, the focus on customer requirements takes a central position.



→ Passenger lift for midibuses and coaches

DH-CH.100-103 • 350 - 450 kg



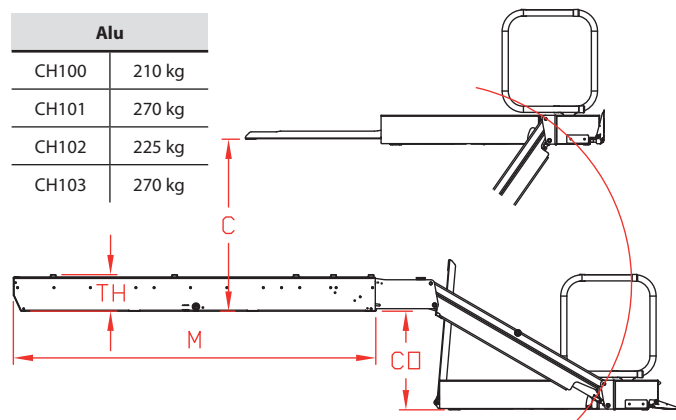
The DH-CH100...103 are heavy duty cassette lifts, to assist wheel-chair passengers to embark or disembark the midibus or coach in optimum safety.

The various lifts in this range are specially designed for particular mounting positions: under the chassis, in a compartment high above the ground (e.g. above wheel box), on the floor of the luggage compartment, or integrated in the stairs at the access door.

Robust, heavy duty, and nicely stowed out of the way

Weights [see pg. 11]

Alu	
CH100	210 kg
CH101	270 kg
CH102	225 kg
CH103	270 kg



Fitting dimensions

Type	ARM	CAP	CO max.	TH	M	C min.	C max.	K max.
CH100	800	350 kg	570	191	1917	530	590	1160
CH100-M	1050	350 kg	700	191	1917	660	780	1480
CH101	1680	300 kg	1250	205	2250	280	350	1600
CH102 [S]	800	350 kg	500	150	1995	290	680	1180
CH102-OV [S]	1100	350 kg	780	150	1995	190	400	1180
CH103 [S]	1100	450 kg	535	200	1995	380	940	1475
CH103-1300 [S]	1300	350 kg	640	200	2195	530	1150	1790
CH103-1280 [S]	1280	350 kg	600	200	1995	485	1135	1735

[S] = suitable for integration in the access stairs of the bus

Technical specifications

Lift frame	2 lift arms
Cylinders	2 lift cylinders + 2 fixed stabilisers
Retraction IN / OUT	Electric motor + gear wheel system
Automatic tilt at ground level	Not needed, flat platform
Standard platform dimensions	1200 x 800 mm (LxW)
Platform details	<ul style="list-style-type: none"> Aluminium platform with anti-slip coating Automatic roll-stop at the point Automatic bridge plate to the vehicle floor
Safety rails	2, left & right, folding manually
Standard control unit	3-button remote control with spiral cable (S002)



→ Passenger lift for coaches

DH-RB.05 • 500 kg



The **tuck-away** lift DH-RB is specially designed for coaches, to help wheelchair passengers to embark and disembark the vehicle in a comfortable and safe manner.

In its travel position, this lift is neatly folded away in the **area below the door exit on the upper aisle** of the coach.

Upon deployment, the platform is first lowered to the ground, then unfolded into work position.

The standard model is mounted directly under the vehicle door. As an option, it can be equipped with a **side-shift frame** (option S981), making it suitable for coaches where the door position is offset from the fitting space of the lift.

Lift capacity

CAP

500 kg

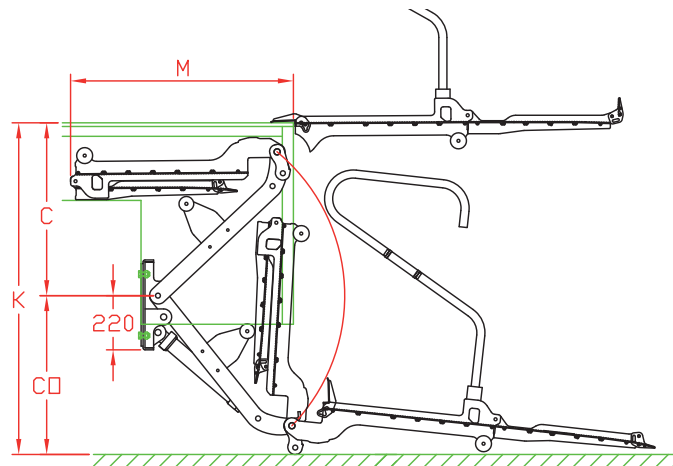
Weights [see pg. 11]

Alu / Alu

1380 mm

175 kg +

Powerful tuck-away lift for the heaviest wheelchairs



Fitting dimensions

ARM	760	820	880	940	1000
K max.	1410	1510	1610	1710	1810
C max.	on request - ask for study drawing				
CO max.	on request - ask for study drawing				
M (platform)	± 915				

Technical specifications

Lift frame	Base plate to be bolted to the vehicle chassis
Cylinders	<ul style="list-style-type: none">• 1 central lift cylinder for max. platform stability• 2 fixed stabilisers for the platform orientation
Automatic tilt at ground level	Yes, mechanical
Platform details	<ul style="list-style-type: none">• Aluminium platform with anti-slip surface• Manual unfolding of the platform and its point• Automatic roll-stop at the point• Automatic roll-stop at the front edge as an option (S980)
Safety rails	2, left & right, folding manually
Standard platform dimensions	1380 x 800 mm (LxW) Other dimensions on request
Lift arm lengths	760 - 820 - 880 - 940 - 1000 mm
Standard control unit	2-button remote control with spiral cable (S001)



DH-TV.03 • 300 kg



The lift is usually mounted at one of the side doors of the bus, and occupies the space that is otherwise occupied by the access stair. In rest position, it takes the shape and function of the **access stair**, and is used by pedestrians to step in & out of the bus. Upon deployment, the system is **automatically transformed into a lifting platform**, and is used to assist wheelchair users to enter & exit the vehicle.

Weights [see pg. 11]

CAP	Standard steel	
300 kg	1000 mm	180 kg

Technical drawings of the K series door handle. The left drawing is a side view showing dimensions: 1200 (height), 1000 (reach), 300 (offset), 540 (offset), 300 (offset), 190 (height), Max. K 1190 (height), and Max. 590 (height). The right drawing is a front view showing dimensions: 1050 (width), 855 (width), 120 (width), 520 (height), 300 (height), 850 (width), and Max. 590 (height).

Lift frame	2 lift columns in light-weight aluminium
Cylinders	2 lift cylinders with direct action on the lift system; no cables, chains or belts
Working principle	<ul style="list-style-type: none"> • Upper step articulates from horizontal to vertical position when the platform is deployed • Lower step incorporates a sliding platform, enabling to extend from a step to a wheelchair lift platform
Automatic tilt at ground level	Not needed, flat platform
Platform details	<ul style="list-style-type: none"> • Automatic retraction from rest to work position and back • Automatic roll-stop at the rear edge of the platform
Safety rails	2, fixed to the lift columns
Standard platform dimensions	1000 x 850 mm (*) Other dimensions on request.
Standard control unit	3-button remote control with spiral cable (S002)

(*) Consult DHOLLANDIA re. CE conformity of the platform dimensions.



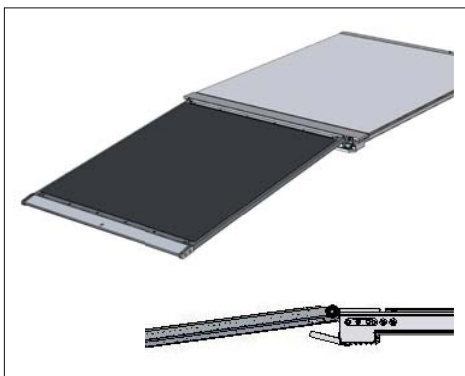
→ Electric ramps lift for low-floor trams and buses

The **fully automatic electric ramps** DH-BRE... are designed to assist wheelchair passengers and parents with a baby buggy to enter or exit the bus or tram safely and comfortably.

These ramps are equipped with state-of-the-art safety devices (safety carpet, safety edge with emergency stop at the point,...) and emergency controls.

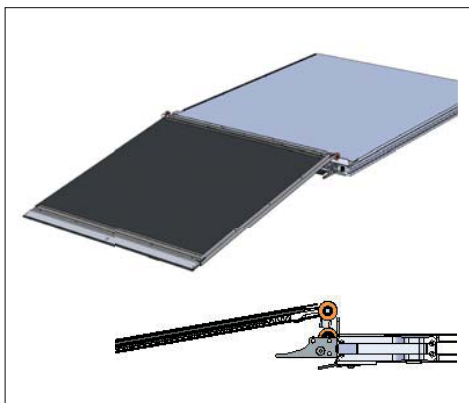
DH-BREO.03

for integrated installation in the vehicle floor



DH-BREU.03

for installation under the vehicle floor and retrofit



Fully automatic electric ramps for wheelchair access

Technical specifications DH-BREO.03

Cassette dimensions	1290 x 980 x 41 mm (L x W x H)
Platform dimensions	1090 x 908 mm (L x W) Other dimensions available on request
Capacity	300 kg
Platform construction	Light weight aluminium platform, equipped with a safety carpet and safety edge to avoid any hazardous situation in case of human obstruction
Retraction IN / OUT	Electric motor + chain system
Mounting position	Integrated in the vehicle floor
Weight indication	45 kg
Standard control unit	2-button remote control + reset button with spiral cable

Technical specifications DH-BREU.03

Cassette dimensions	1420 x 1190 x 50 mm (L x W x H)
Platform dimensions	1090 x 1040 mm (L x W) Other dimensions available on request
Capacity	300 kg
Platform construction	Light weight aluminium platform, equipped with a safety carpet and safety edge to avoid any hazardous situation in case of human obstruction
Retraction IN / OUT	Electric motor + chain system
Mounting position	Mounted under the vehicle floor Adapted for floor thickness between 45 - 55 mm
Weight indication	75 kg
Standard control unit	2-button remote control + reset button with spiral cable

Lifts for factory built panel vans



2



→ Tail lift for factory built panel vans

DH-P1.03 • 300 kg



The DH-P1 is a **linear 1-arm lift**, suitable for mounting inside the rear or side doors of a wide range of Multi Passenger Vehicles and vans.

In its standard configuration, the DH-P1 has its travel position just inside the doors of the vehicle. As an option, it can be equipped with an **articulated frame**, that allows to stow the platform against the side of the body, keeping the access through the vehicles doors free.

The platform is **flat**, so that goods, such as roll-cages, white & brown goods, small machinery,..., can be loaded with minimal effort.

The DH-P1 can be mounted at the rear doors or at the side door; at the left or right side in the door aperture.

Lift capacity

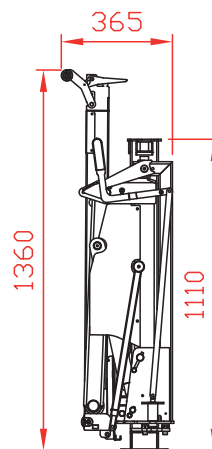
CAP	CG	LM
300 kg	500 mm	1.5 kNm

Weights [see pg. 11]

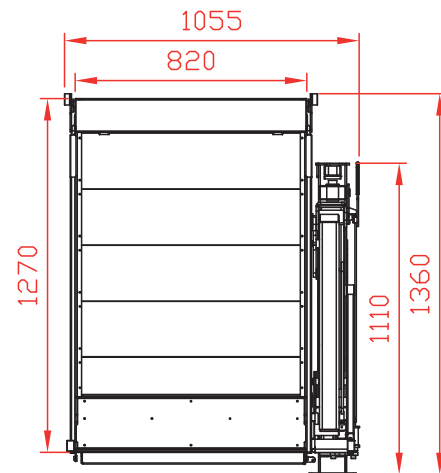
	Standard	S959
1260 mm	123 kg	139 kg

Step-in model, easy to use and flexible

S959 in travel position
mounted right side



S959 in work position
mounted right side



Fitting dimensions

ARM	600	700
K max.	700	950

Technical specifications

Lift frame	<ul style="list-style-type: none">• 1 lift arm• Standard = fixed frame: the closed platform stands in the door aperture• Option S959 = articulated frame: the platform can be stowed in a travel position against the side of body
Cylinders	1 lift cylinder
Automatic tilt at ground level	Not needed, flat platform
Platform material	Steel frame + aluminium profiles
Platform equipment	<ul style="list-style-type: none">• Automatic roll-stop at the rear edge of the platform• Automatic bridge plate and toe-guard at the front edge of the platform
Standard platform depths	1080 - 1170 - 1260 mm Other depths on request (S958.L)
Standard platform widths	820 standard / 720 optional (S958.W)
Standard control unit	2-button remote control with spiral cable (S001)



→ Tail lift for factory built panel vans

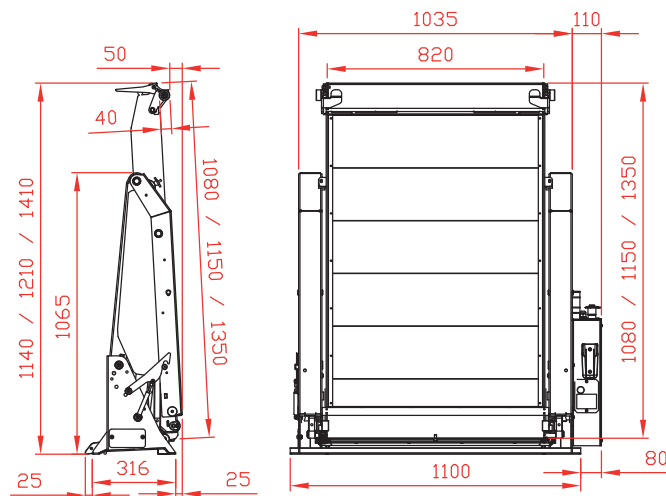
DH-P2.04 • 450 kg



The DH-P2 is a **fully automatic linear lift**, suitable for mounting **inside the loading space** of the vehicle. It can be mounted at the rear doors or side doors of a wide range of Multi Passenger vehicles and vans.

The construction with **2 lift arms** provides maximum platform stability. The platform is **flat**, so that goods, such as roll-cages, white & brown goods, small machinery,..., can be loaded with minimal effort.

Safe & reliable interior lift with 2 lift arms



Fitting dimensions

ARM	700
K max.	900

Lift capacity

CAP
450 kg

Weights [see pg. 11]

Alu platform	
1350 x 820	137 kg
1150 x 820	133 kg
1080 x 820	131 kg
S953	+10 kg
S957	+6 kg

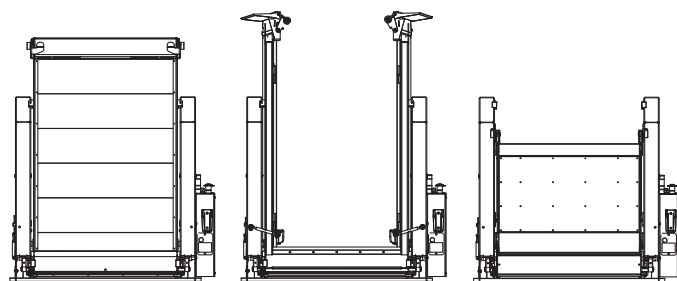
Technical specifications

Lift frame	2 lift arms
Cylinders	2 lift cylinders
Automatic tilt at ground level	Not needed, flat platform
Platform material	Steel frame + aluminium profiles
Platform equipment	<ul style="list-style-type: none">Automatic roll-stop at the rear edge of the platformAutomatic bridge plate and toe-guard at the front edge of the platform
Standard platform depths	1080 - 1150 - 1350 mm Other depths on request (S958.L)
Standard platform widths	820 standard / 920 optional (S958.W)
Standard control unit	2-button remote control with spiral cable (S001)

Standard

Option S953

Option S957





→ Tail lift for factory built panel vans

DH-LSP.05 • 500 kg



The DH-LSP was the first cantilever lift design, tailor-made to suit factory built panel vans, and DHOLLANDIA still continues to lead the innovations in this field today. Thanks to the **unique shape of the lift arms**, no cut-outs are needed in the vehicle chassis and body, and the **ground clearance** under the lift is maximised.

The passage from the platform to the vehicle floor is realised by an articulated bridge plate, available as option on this lift (S243.B).

The DH-LSP offers the largest possible platform surface on factory built panel vans, and is suitable for all types of cargo, including pallets.

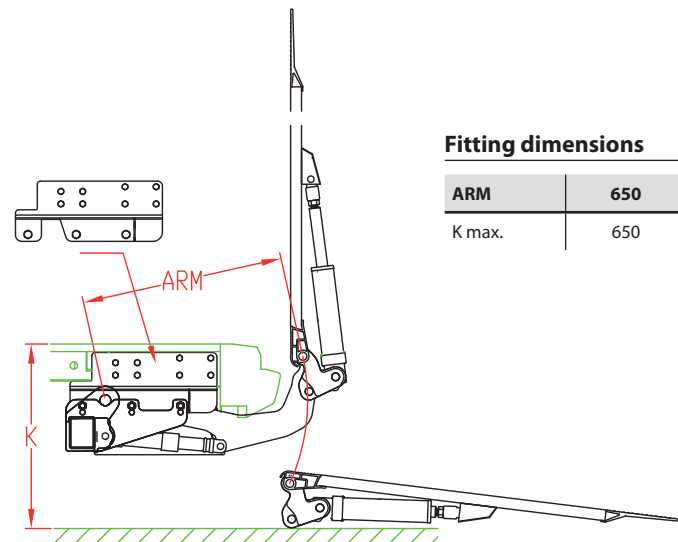
Lift capacity

CAP	CG	LM
350 kg	500 mm	1,75 kNm
500 kg	500 mm	2,5 kNm

Weights [see pg. 11]

ALU platform	
1300 mm	185 kg
1550 mm	192 kg

Largest possible platform surface on factory built panel vans



Fitting dimensions

ARM	650
K max.	650

Technical specifications

Lift frame	Compact frame for max. ground clearance
Cylinders	2 lift cylinders + 1 tilt cylinder
Automatic tilt at ground level	Yes, with hydraulic memory cylinder
Platform material	Light-weight aluminium
Standard platform depths	Alu: 1300 - 1550 mm Longer platforms on request (S203)
Standard platform widths	Alu: 1450 mm Free up to 1550 in steps of 5 mm
Lift arm lengths	650 mm
Lift arm widths CA	240 (LSPZ half width) - 434 - 574 - 674 mm Power pack premounted for CA=240 and CA=674. Ask confirmation from DHOLLANDIA.
Standard control unit	3+1 button panel control (S094.3+1.Z) + battery isolator switch (S097.A)

Special mounting brackets are available for:

- Citroën Jumper / Relay
- Renault Master FWD / Trafic
- Fiat Ducato
- Opel Movano FWD / Vivaro
- Ford Transit
- Volkswagen Crafter / LT
- Mercedes Sprinter
- Nissan Interstar / Primastar
- Peugeot Boxer



→ Tail lift for factory built panel vans

DH-LSP.07 • 500 - 750^(*) kg



The DH-LSP.07 is a **robust lift** with maximum 750 kg lift capacity [depending on the type of vehicle (*)].

The **innovating shape of the lift arms** is specially designed for vans where the vertical distance between the loading floor of the vehicle and the under side of the doors is significantly above average, and eliminates the necessity to cut in the steel construction of the body.

The passage from the platform to the vehicle floor is realised by an articulated bridge plate, available as option on this lift (S243.B).

Most frequently, it is mounted to Renault Master RWD, and Iveco Daily.

Lift capacity

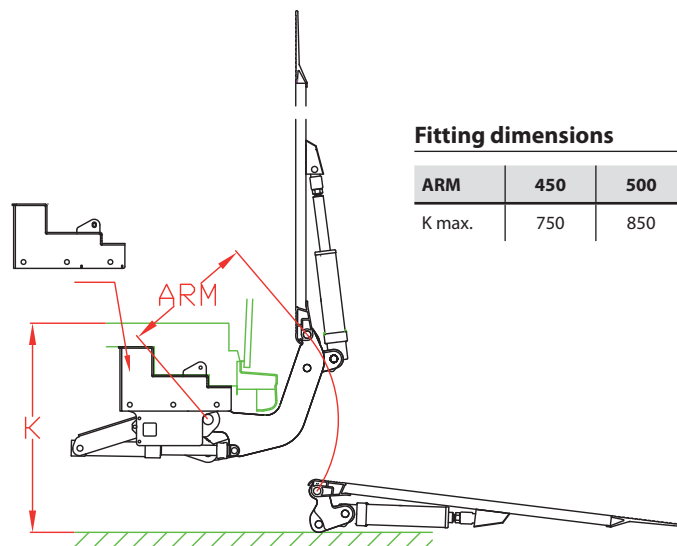
CAP	CG	LM
500 kg	500 mm	2,5 kNm
750 kg (*)	500 mm	3,75 kNm

(*) Depends on vehicle restrictions.
Ask advice from DHOLLANDIA.

Weights [see pg. 11]

ALU platform	
1300 mm	183 kg
1550 mm	190 kg

Largest possible platform surface on factory built panel vans



Fitting dimensions

ARM	450	500
K max.	750	850

Technical specifications

Lift frame	Compact frame for max. ground clearance
Cylinders	2 lift cylinders + 1 tilt cylinder
Automatic tilt at ground level	Yes, with hydraulic memory cylinder
Platform material	Light-weight aluminium
Standard platform depths	Alu: 1300 - 1550 mm Longer platforms on request (S203)
Standard platform widths	Alu: 1450 mm Free up to 1550 in steps of 5 mm
Lift arm lengths	450 - 500 mm
Lift arm widths CA	240 (LSPZ half width) - 674 mm
Standard control unit	3+1 button panel control (S094.3+1.Z) + battery isolator switch (S097.A)

Special mounting brackets are available for:

- Renault Master RWD
- Iveco Daily



Option S604

Kit without
rear doors



DH-LSPZ

Folding
platform,
free access



Option S371.LSP

Mounting system
for ball coupling



DH-LSP special executions

The option S604 is designed for the height H2 of most brands of factory built panel vans.

The longer platform and the purpose built body kit **replace the original rear doors** of the vehicle.

This solution offers increased surface to manoeuvre loads around on the platform, and simplifies the routine of opening & closing the lift. Whilst offering excess platform surface, the applicable CG of 500 mm must still be observed.

The kit and platform dimensions depend on the type of vehicle.

The DH-LSPZ is available as **half-width** platform, or with a **folding platform** (option S238).

When the platform stands in its travel position, the driver has **free access** to the cargo space inside the van.

When large or heavy loads must be handled, the platform can be opened into horizontal work position, and unfolded to a full width platform in a matter of seconds (S238).

Weights [see pg. 11]

1/2 width	
1300 mm	160 kg
1550 mm	164 kg

Weights [see pg. 11]

S238	
1300 mm	190 kg
1550 mm	199 kg

The option S371.LSP is a certified mounting system for **ball couplings for trailers**, with following specifications:

- Max. D-value = 20,2 kN
- Max. vertical load S at the coupling point = 150 kg

In most mounting situations, it is recommended to use a demountable ball coupling system (Rockinger Variobloc or equivalent)



→ Tail lift for factory built panel vans

DH-LC2.07 • 500 - 750 kg



The DH-LC2 is a special execution of the compact 2-cylinder lift DH-LC.07, adapted to suit factory built panel vans with **regular C-shaped chassis** (Iveco Daily, Mercedes Vario,...).

The passage from the platform to the vehicle floor is realised by an articulated bridge plate, available as option on this lift (S243.B).

The lift concept has been engineered to maximize the ground clearance under the lift, and to reduce the cut-outs in the rear cross member of the vehicle floor to a negligible minimum.

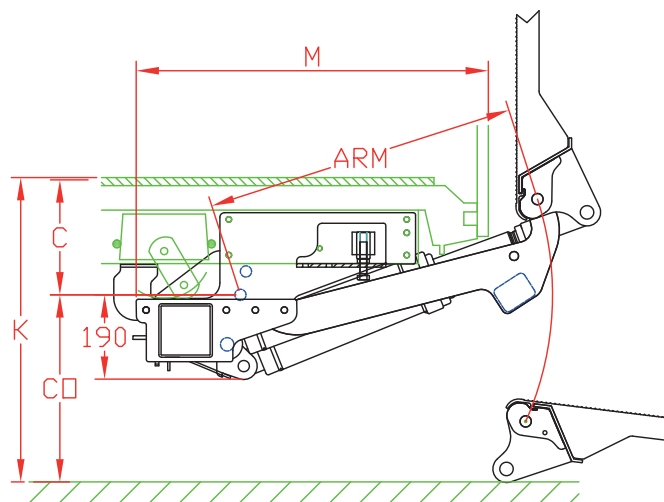
Lift capacity

CAP	CG	LM
500 kg	500 mm	2,5 kNm
750 kg	500 mm	3,75 kNm

Weights [see pg. 11]

ALU platform	
1250 mm	205 kg
1450 mm	213 kg
1600 mm	219 kg

Adapted to vans with C-shaped chassis



Fitting dimensions

ARM	700
K max.	1100
C max.	520
C min.	250
CO max.	580
M at C max.	600
M at C min.	750

Technical specifications

Lift frame	120 x 120 mm
Cylinders	1 lift cylinder + 1 tilt cylinder
Automatic tilt at ground level	Yes, mechanical
Platform material	Light-weight aluminium
Standard platform depths	Alu: 1250 - 1450 - 1600 mm
Standard platform widths	Alu: 1450 mm Free up to 1550 in steps of 5 mm
Lift arm lengths	700 mm
Lift arm widths	350 (LCZ half width) - 600 mm
Standard control unit	3+1 button panel control (S094.3+1.Z) + battery isolator switch (S097.A)

Special mounting brackets are available for:

- Iveco Daily



→ Tail lift for factory built panel vans

DH-LC.15 • 1000 - 1500 kg



The DH-LC.15 offers 1500 kg lift capacity for the **higher capacity factory built panel vans** from 4.5 up to 7.5T GVW (e.g. Mercedes Vario, Iveco Daily,...).

The passage from the platform to the vehicle floor is realised by an articulated bridge plate, available as option on this lift (S243.B).

The lift concept has been engineered to maximize the ground clearance under the lift, and to reduce the cut-outs in the rear cross member of the vehicle floor to a negligible minimum.

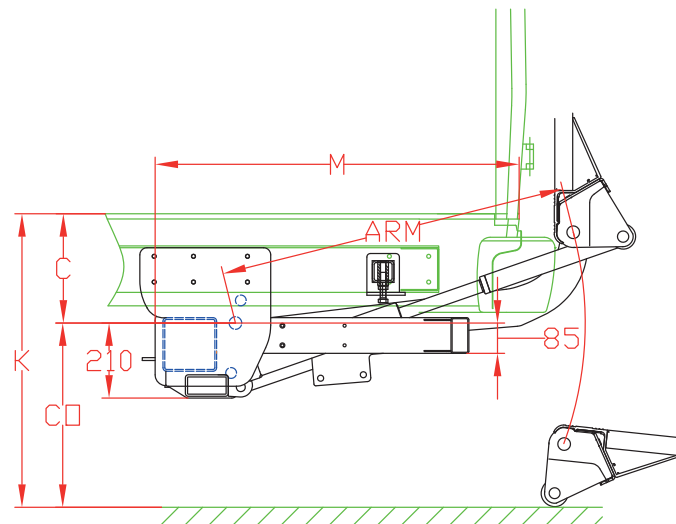
Lift capacity

CAP	CG	LM
1000 kg	500 mm	5 kNm
1500 kg	600 mm	9 kNm

Weights [see pg. 11]

ALU platform	
1250 mm	330 kg
1450 mm	337 kg
1600 mm	342 kg

For the trucks among the factory built panel vans



Fitting dimensions

ARM	980
K max.	1500
C max.	850
C min.	300
CO max.	650
M at C max.	650
M at C min.	1015

Technical specifications

Lift frame	150 x 150 mm
Cylinders	1 lift cylinder + 2 tilt cylinders
Automatic tilt at ground level	Yes, mechanical
Platform material	Light-weight aluminium
Standard platform depths	Alu: 1250 - 1450 - 1600 mm Longer platforms on request (S203)
Standard platform widths	Free up to 1600 in steps of 5 mm
Lift arm lengths	980 mm
Lift arm widths	500 mm
Standard control unit	3+1 button panel control (S094.3+1.Z) + battery isolator switch (S097.A)

Special mounting brackets are available for:

- Mercedes Vario



→ Tail lift for factory built panel vans

DH-C001.03 • 300 kg



The cassette lift DH-C001 stows neatly in a sealed cassette box under the loading floor of the vehicle. This solution keeps the **access through the rear doors free**, and **occupies no space inside the vehicle**.

The DH-C001 can be mounted to most types of commercial vans with a max. floor height of 850 mm.

The flat platform is suitable to handle roll-cages, small machines & equipment, white & brown goods, etc... It is not suitable to manipulate pallets.

To keep this lift light, simple and budget friendly, the retraction of the platform is done by hand.

Lift capacity

CAP	CG	LM
300 kg	500 mm	1.5 kNm

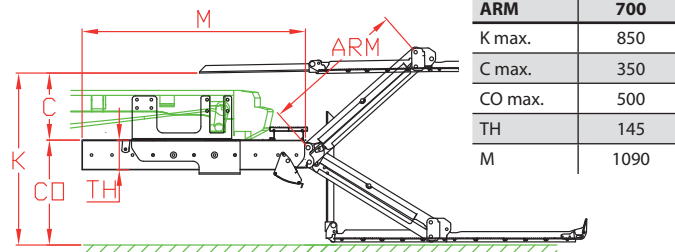
Weights [see pg. 11]

ALU platform	
Std.	145 kg

Handy to have on board, for the occasional use



Fitting dimensions



Technical specifications

Lift frame	2 lift arms
Cylinders	2 lift cylinders + 2 fixed stabilisers
Retraction in / out	<ul style="list-style-type: none"> Manual Automatic retraction possible with model DH-CH001.03
Automatic tilt at ground level	Not needed, flat platform 20 mm
Platform material	Steel frame + aluminium profiles
Platform equipment	<ul style="list-style-type: none"> Fixed platform point Automatic roll-stop as option (S950) Bridge plate and toe-guard at the front edge of the platform
Standard platform dimensions	1280 x 800 mm
Standard control unit	2-button remote control with spiral cable (S001)



→ Lift for vans, trucks, trailers and semi-trailers

DH-VZ.03 • 300 kg



The interior column lift DH-VZ is designed to suit a wide range of Multi Passenger Vehicles, vans, and even larger commercial vehicles.

In its travel position, the platform is **stowed against the side panel** of the vehicle. Upon use, the lift frame is turned to a work position outside the vehicle. Then the platform is opened by hand. The hydraulic lift functions are operated by means of 2 buttons integrated in the lift column.

The standard platform is made of 1 single section. **Foldable platforms** (option S719) are available for vehicles with insufficient door aperture, or in order to increase the overall useful platform surface.

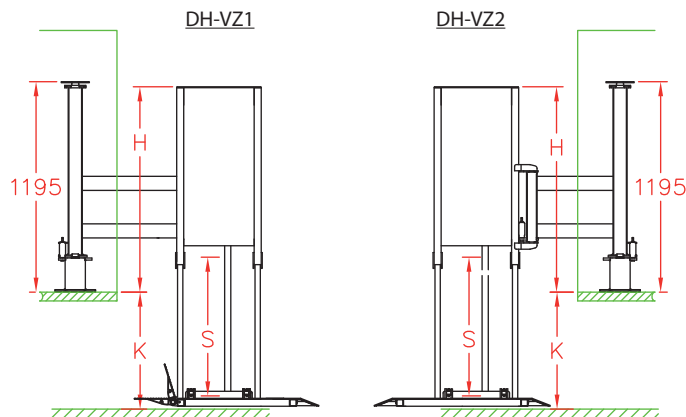
Lift capacity

CAP	CG	LM
300 kg	500 mm	1.5 kNm

Weights [see pg. 11]

ALU platform	
Std.	140 kg

Column lift with free access through the doors



Fitting dimensions

Stroke S	750	1150 (1)	1550 (2)
K max.	700	1100	1500
H	1165	1565	1965

(1) Option S716 (2) Option S717

Technical specifications

Lift frame	<ul style="list-style-type: none"> Column lift with single pillar VZ1: frame with 1 articulation point. In work position the platform stands right behind the body VZ2: frame with 2 articulation points. The platform can pivot towards the pavement
Cylinders	1 lift cylinder
Automatic tilt at ground level	Not needed, flat platform 35mm
Platform material	Steel frame + aluminium anti-slip top plate
Platform details	<ul style="list-style-type: none"> VZ1: hinged bridge plate at the front edge of the platform VZ2: platform in 1 single section
Standard platform dimensions	VZ1: 900x800 mm • VZ2: 900x1000 mm Other dimensions (S718) & foldable platforms (S719) available on request
Standard control unit	2-button control integrated in the lift column



→ Lift for vans, trucks, trailers and semi-trailers

DH-VZS.03 • 350 kg



In its travel position, the interior lift **DH-VZS** is stowed against the side of the body, and offers the driver **quick and free access** through the vehicle doors. Upon use, the platform is simply pulled out and opened by hand. As the platform slides straight towards the door exit, the floor space beside it can be fully occupied (as opposed to the DH-VZ.03). A wander lead with spiral cable is used to operate the platform up and down.

The DH-VZS is perfectly suitable to handle roll cages, small machines and equipment, white & brown goods, packages, e-business,...

It fulfils the needs of the professionals of the **urban distribution**, the vehicle **rental business**, and the **occasional user** wanting to maximize the flexibility of his vehicle.

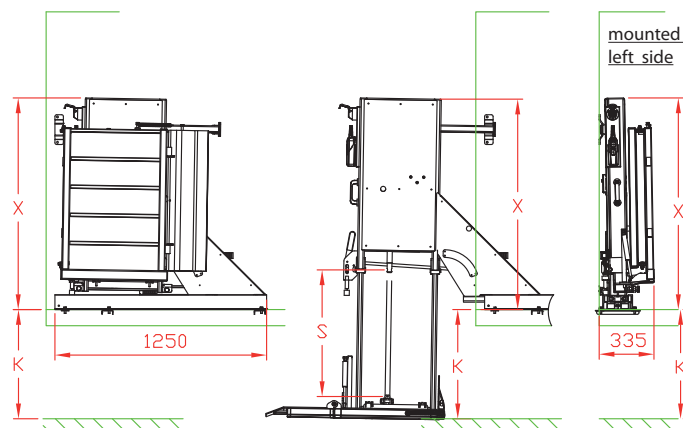
Lift capacity

CAP	CG	LM
350 kg	500 mm	1.75 kNm

Weights [see pg. 11]

ALU platform	
1000x820 mm	155 kg

Offering free access & maximum interior loading space



Fitting dimensions

Stroke S	750	850	1150	1550 (*)
K max.	620	720	1020	1420
X	1250	1350	1650	2050

(*) optional

Technical specifications

Lift frame	Telescopic lift frame, sliding in / out on a rail mounted to the vehicle floor
Cylinders	1 lift cylinder
Retraction in / out	Manual, the platform is pulled out and opened by hand
Platform material	Steel frame + aluminium anti-slip top plate
Standard platform dimensions	1000x820x35 mm or 1050x1030x35 mm Other dimensions on request
Platform specifications	<ul style="list-style-type: none">Flat platform for easy accessFixed leading edge at rear sideArticulated bridge plate at the front sidePlatform is folding for compact storage
Fitting	<ul style="list-style-type: none">Easy, universal mounting to a wide range of commercial vehiclesCan be mounted left or right, at the rear doors or side doors
Standard control unit	2-button remote control with spiral cable (S001)



→ Lift for vans, trucks, trailers and semi-trailers

DH-VZG.01 • 150 kg



The DH-VZG is a safe and easy-to-use compact interior lift, designed to handle **small loads** (parcels, boxes, barrels, small machinery,...).

Option S970 is specially adapted for **gas bottles**. It includes a smaller platform, and a bottle holder to secure the bottles in vertical position.

The DH-VZG is available with a fixed frame or an articulated frame (see right page).

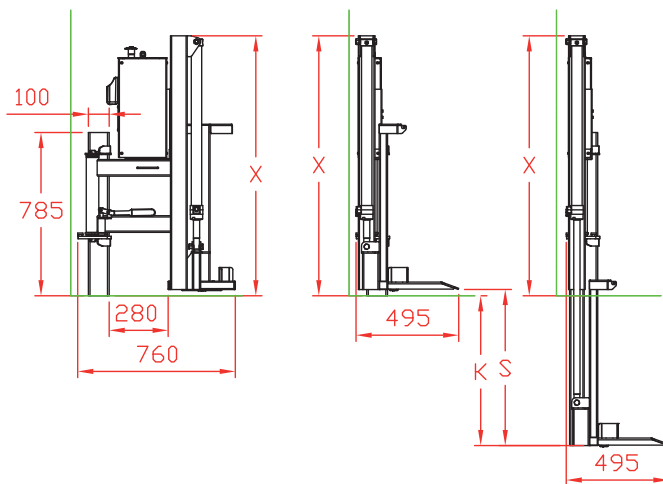
Lift capacity

CAP
150 kg

Weights [see pg. 11]

Steel platform
Std. 70 kg

Compact, simple lift for the smallest loads



Fitting dimensions

Stroke S	750
K max.	725
X	1250

Technical specifications

Lift frame	Single column with telescopic lift mechanism
Type 1: fixed frame	The platform travels straight up / down from its mounting position in the vehicle (only suitable for chassis with body, not for factory built panel vans)
Type 2: articulated frame	The platform can pivot from a travel position inside the vehicle to a work position outside the vehicle, then go up / down (can be fitted at the rear or side doors, suitable for factory built panel vans)
Cylinders	1 lift cylinder
Standard platform dimensions	<ul style="list-style-type: none"> 600x480 mm Option S970 GAS lift: 315x340 mm
Platform specifications	Flat platform for easy access, steel
Fitting	Single column, to be mounted to the vehicle floor and to the side of the vehicle body
Standard control unit	2-button remote control with spiral cable (S001)

Cantilever lifts



3



→ Cantilever lift for light commercial vehicles

DH-LC.07 • 500 - 750 kg



The **2-cylinder** DH-LC is at the entry level of DHOLLANDIA's range of cantilever lifts. Thanks to its intrinsic simplicity, its low maintenance cost and its attractive pricing, this compact lift is ideal to equip **rental vehicles** and **light-duty commercial vehicles**.

The DH-LC is available with a wide variety of quick-fit mounting plates, to suit most commercial vans and light trucks up to 7.5T GVW, as well as small trailers and semi-trailers.

Lift capacity

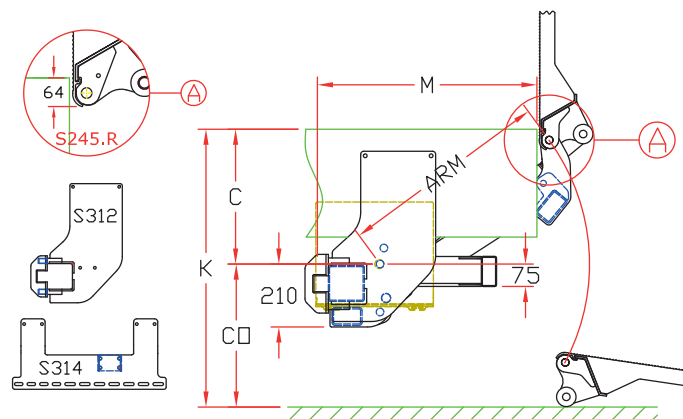
CAP	CG	LM
500 kg	500 mm	2.5 kNm
750 kg	600 mm	4.5 kNm

Weights [see pg. 11]

ALU platform	
1250 mm	199 kg
1450 mm	207 kg
1600 mm	213 kg

Weights incl. CE bumper

Compact, basic 2-cylinder lift



Fitting dimensions

ARM		700	850
K max.		1090	1310
C max.		520	620
C min.		300	300
CO max.		570	670
M	at C max.	675	785
M	at C min.	820	975

Technical specifications

Lift frame	120 x 120 mm
Cylinders	1 lift cylinder + 1 tilt cylinder
Automatic tilt at ground level	Yes, mechanical
Platform material	Light-weight aluminium
Platform overlap under floor	-64 mm
Standard platform depths	1250 - 1450 - 1600 mm (max. 1800)
Standard platform widths	Free up to 2200 in steps of 5 mm
Lift arm lengths	700 - 850 mm
Lift arm widths	620 mm
Standard control unit	Controls integrated in cover of power pack, with joystick, push button safety switch, and battery isolator switch (S516.BP)



→ Cantilever lift for light commercial vehicles

DH-LM.10 • 500 - 1000 kg



The **4-cylinder** DH-LM.10 is DHOLLANDIA's **best seller** in the light capacity lift range. Thanks to its **superior stability** and performance in comparison to competing 2-cylinder lifts, and its competitive pricing, it offers an **excellent price-quality ratio**.

It is ideal for general purpose work and distribution transport up to 1000 kg useful capacity. It suits commercial vans and light trucks up to 7.5T GVW, but can also be mounted to small trailers and semi-trailers.

Lift capacity

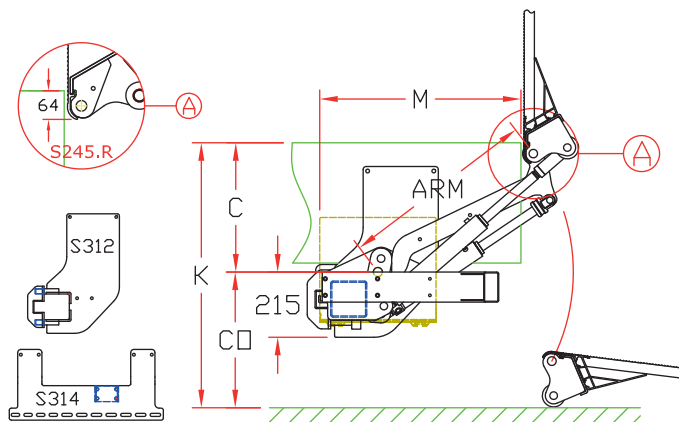
CAP	CG	LM
500 kg	500 mm	2.5 kNm
750 kg	600 mm	4.5 kNm
1000 kg	600 mm	6 kNm

Weights [see pg. 11]

ALU platform	
1250 mm	205 kg
1450 mm	213 kg
1600 mm	219 kg
1800 mm	229 kg

Weights incl. CE bumper

Best seller: superior stability and performance



Fitting dimensions

ARM		650	750	850 (*)
K max.		1080	1220	1370
C max.		530	610	690
C min.		250	300	350
CO max.		550	610	680
M	at C max.	580	640	700
M	at C min.	770	870	950

(*) 850 mm arms optional. Consult DHOLLANDIA for the optimum solution (DH-LM.15).

Technical specifications

Lift frame	120 x 120 mm
Cylinders	2 lift cylinders + 2 tilt cylinders
Automatic tilt at ground level	Yes, mechanical
Platform material	Alu or steel (steel = 1000 kg only)
Platform overlap under floor	-64 mm
Standard platform depths	Steel: 1250-1500 mm (max. 1500) Alu: 1250-1450-1600-1800 mm (max. 2000)
Standard platform widths	Steel: 2350-2480-2500-2520-2550 mm Alu: free up to 2200 in steps of 5 mm
Lift arm lengths	650 - 750 - 850 mm
Lift arm widths	510 - 660 - 1200 mm
Standard control unit	Exterior control box with joystick, turn button safety switch, and battery isolator switch (S008.BT)



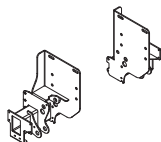
→ Cantilever lift for light commercial vehicles

DH-LMQ.07 / 10 • 500 - 1000 kg

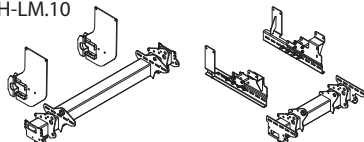


The DH-LMQ.07 (500-750 kg) and DH-LMQ.10 (500-1000 kg) are equipped with premounted mounting plates at a fixed centre distance. This strong 4-cylinder construction without cross tube allows to **save weight**, and to leave the **spare wheel in its original position** (in most cases), without compromising on stability.

DH-LMQ



DH-LC.07
DH-LM.10



Lift capacity

CAP	CG	LM
500 kg	500 mm	2.5 kNm
750 kg	600 mm	4.5 kNm
1000 kg (*)	600 mm	6 kNm

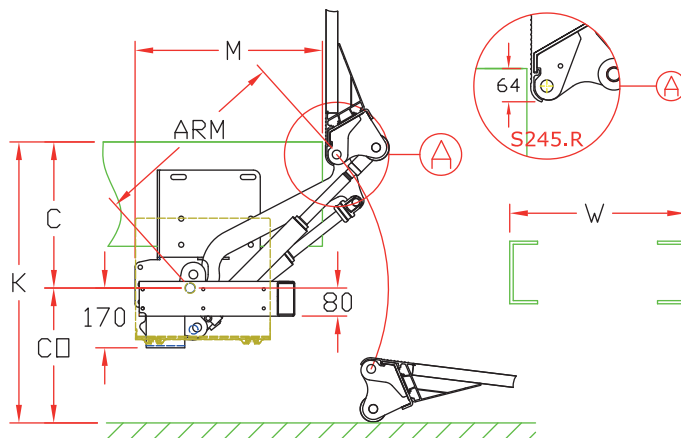
(*) DH-LMQ.10 only

Weights [see pg. 11]

LMQ.07		LMQ.10	
1250 mm	180 kg	1250 mm	195 kg
1450 mm	188 kg	1450 mm	203 kg
1600 mm	194 kg	1600 mm	209 kg

Weights incl. CE bumper

Light-weight 4-cylinder lift for short overhang



Fitting dimensions

ARM		570	650	750	850 (*)
		LMQ.07		LMQ.10	
K max.		980	1060	1220	1380
C max.		500	530	610	690
C min.		250	300	300	350
CO max.		480	530	610	690
M	at C max.	450	540	600	660
M	at C min.	650	710	815	905

(*) 850 mm arms optional. Preferably use DH-LM.15. Consult DHOLLANDIA for the optimum solution

Technical specifications

Lift frame	Compact lift frame for short overhang
Cylinders	2 lift cylinders + 2 tilt cylinders
Automatic tilt at ground level	Yes, mechanical
Platform material	Light weight aluminium
Platform overlap under floor	-64 mm
Standard platform depths	LMQ.07: 1250 - 1450 - 1600 max. LMQ.10: 1250 - 1450 - 1600 - 1800 max.
Standard platform widths	Free up to 2550 in steps of 5 mm
Lift arm lengths	LMQ.07: 570 mm LMQ.10: 650 - 750 - 850 mm
Lift arm widths CA	CA=870 W=755 • CA=975 W=860
Standard control unit	Controls integrated in cover of power pack, with joystick, push button safety switch, and battery isolator switch (S516.BP)

→ Cantilever lift for medium size trucks

DH-LM.15 • 1000 - 1500 kg



The DH-LM.15 forms the missing link between 1000 and 2000 kg capacity lifts.

It is considerably lighter and requires less overhang than the DH-LM.20; stronger and more robust than the DH-LM.10. Hence it is the **ideal weight saving lift for medium capacity trucks of 7.5 to 12T GVW**, and is recommended as the better alternative for the DH-LM.10 and DH-LMQ.10 with long 850 mm arms, or 1000 kg platforms above 1600 mm.

The DH-LM.15 replaces the DH-LMQ.15 from 2012 onwards.
Contrary to this DH-LMQ.15, the mounting plates of the new lift are bolt-on, and fully adjustable in width.

Lift capacity

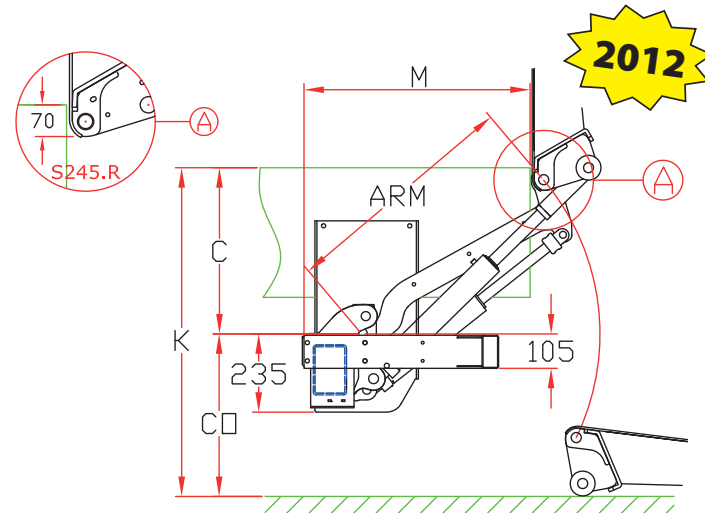
CAP	CG	LM
1000 kg	600 mm	6 kNm
1500 kg	750 mm	11.25 kNm

Weights [see pg. 11]

STEEL platform		ALU platform	
1500 mm	415 kg	1600 mm	295 kg
1750 mm	465 kg	1800 mm	306 kg

Weights incl. CE bumper

Light weight transition model between LM.10 and LM.20



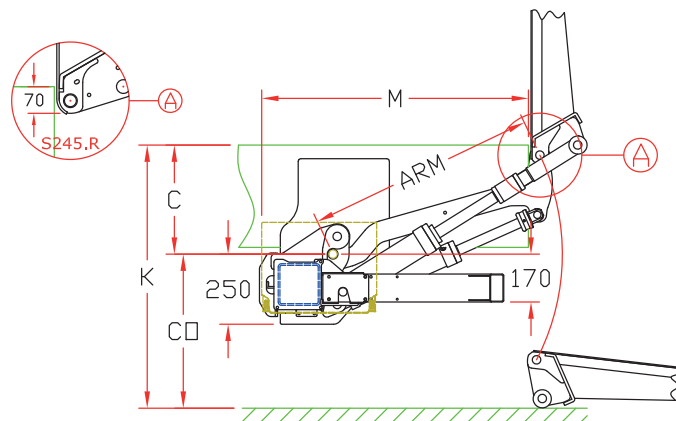
Fitting dimensions

ARM		720	800	880
K max.		1165	1270	1385
C max.		580	640	705
C min.		300	350	400
CO max.		585	630	680
M	at C max.	610	665	710
M	at C min.	810	875	940

Technical specifications

Lift frame	100 x 150 mm
Cylinders	2 lift cylinders + 2 tilt cylinders
Automatic tilt at ground level	Yes, mechanical
Platform material	Aluminium or steel
Platform overlap under floor	-70 mm
Standard platform depths	Steel: 1500 - 1750 mm (max. 2000) Alu: 1600 - 1800 mm (max. 2000)
Standard platform widths	Steel: 2350 - 2480 - 2500 - 2520 - 2550 mm Alu: free up to 2550 in steps of 5 mm
Lift arm lengths	720 - 800 - 880 mm
Lift arm widths	1150 mm
Standard control unit	Controls integrated in cover of power pack, with joystick, push button safety switch, and battery isolator switch (S516.BP)

Remark: model year 2012. All data are provisional.





→ Cantilever lift for trucks, trailers and semi-trailers

DH-LCZ / LMZ • 500 - 2000 kg



The cantilever lifts DH-LC.07, DH-LM.10 and DH-LM.20 are available with **half width** or **partial width** platform **1**, or with **foldable platforms 2**.

These platforms keep one of the rear doors of the vehicle body free, offering quick and unobstructed access to the cargo space at all times.

Lift capacity

CAP	CG	LM
500 kg	500 mm	2.5 kNm
750 kg	600 mm	4.5 kNm
1000 kg	600 mm	6 kNm
1500 kg	750 mm	11,25 kNm
2000 kg	750 mm	15 kNm

Occasional use, quick access to the vehicle cargo space



Fitting dimensions

The lifts with partial width platforms or foldable platforms are custom made in function of the specific dimensions of the vehicle and body.

Contact the study department of **DHOLLANDIA** for detailed information.



→ Cantilever lift for trucks, trailers and semi-trailers

DH-LM.30 • 1500 - 3000 kg



The cantilever lift DH-LM.30 is a **powerful lift** for intensive, heavy duty tasks and “hostile environment” circumstances. It is ideal for the most demanding applications in the regular transport business, such as **supermarket & food distribution**.

The robust frame with reinforced articulation pins and larger cylinders is primarily designed for lift capacities of 2500 to 3000 kg, but is also available as upgraded 1500-2000 kg version.

When equipped with a longer platform (2300 up to ... 3000+ mm), the DH-LM.30 can easily form the rear closure of the vehicle body.

Lift capacity

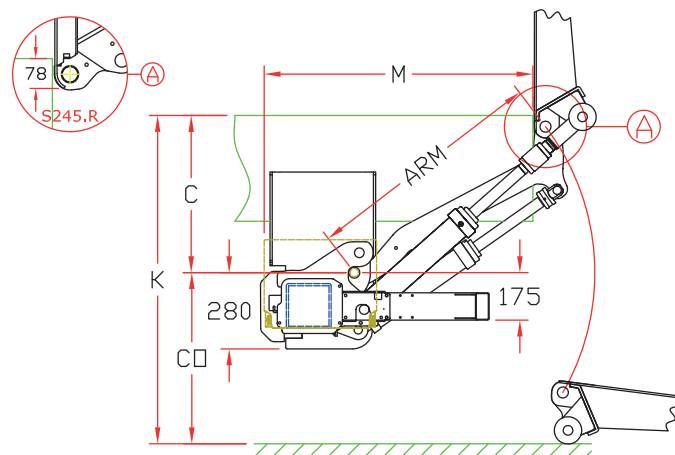
CAP	CG	LM
1500 kg	1000 mm	15 kNm
2000 kg	1000 mm	20 kNm
2500 kg	1000 mm	25 kNm
3000 kg	1000 mm	30 kNm

Weights [see pg. 11]

STEEL platform		ALU platform	
1750 mm	590 kg	1800 mm	480 kg
2000 mm	640 kg	2000 mm	495 kg

Weights incl. CE bumper

Powerful, robust lift for the intensive distribution



Fitting dimensions

ARM		880	940	1000	1100	1200
K max.		1420	1500	1590	1730	1870
C max.		730	780	820	900	980
C min.		300	350	400	450	500
CO max.		690	720	770	830	890
M	at C max.	845	880	920	970	1030
M	at C min.	1125	1170	1215	1300	1395

Technical specifications

Lift frame	180 x 180 mm
Cylinders	2 lift cylinders + 2 tilt cylinders
Automatic tilt at ground level	Yes, mechanical
Platform material	Aluminium or steel
Platform overlap under floor	-78 mm
Standard platform depths	Steel: 1750 - 2000 mm (max. 4500) Alu: 1800 - 2000 mm (max. 4500)
Standard platform widths	Steel: 2350 - 2480 - 2500 - 2520 - 2550 mm Alu: free up to 2550 in steps of 5 mm
Lift arm lengths	880 - 940 - 1000 - 1100 - 1200 mm
Lift arm widths	800 - 1150 - 1300 - 1550 mm
Standard control unit	Exterior control box with joystick, turn button safety switch, and battery isolator switch (S008.BT)



→ Cantilever lift for trucks, trailers and semi-trailers

DH-LSU.40 • 3000 - 4000 kg



The DH-LSU.40 is a powerful lift for **heavy loads positioned at an unfavourable centre of gravity** (further away from the rear end of the vehicle).

It is often used for the **transport of cars**. The option S880.LSU includes an overall platform extension to 3000 mm; 2 foldable platform aluminium ramps of 1500 mm and hydraulic stabilising legs.

The DH-LSU.40 3000 kg version can be used for cars up to 2000 kg proper weight. For cars between 2000 & 3000 kg, the lift model DH-LSU.60 4000 kg is appropriate.

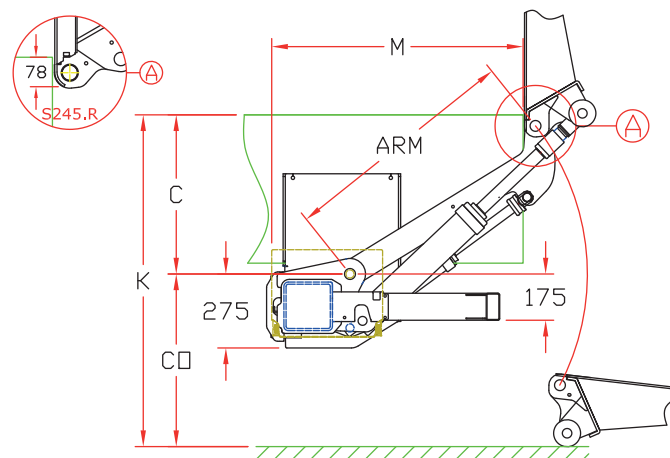
Lift capacity

CAP	CG	LM
3000 kg	1000 mm	30 kNm
3500 kg	1000 mm	35 kNm
4000 kg	1000 mm	40 kNm

Weights [see pg. 11]

STEEL platform	
2000 mm	710 kg
Weights incl. CE bumper	

For car transport and other heavy sizeable loads



Fitting dimensions

ARM		820	880	940	1000	1200
K max.		1310	1420	1500	1580	1900
C max.		660	720	760	810	910
C min.		300	300	350	400	450
CO max.		650	700	740	770	990
M	at C max.	790	815	860	890	1080
M	at C min.	1030	1095	1140	1185	1380

Technical specifications

Lift frame	180 x 180 mm
Cylinders	2 lift cylinders + 2 tilt cylinders
Automatic tilt at ground level	Yes, with hydraulic memory cylinder
Platform material	Steel or aluminium (alu = max. 3000 kg)
Platform overlap under floor	-78 mm
Standard platform depths	2000 mm (max. 4500)
Standard platform widths	Steel: 2350 - 2480 - 2500 - 2520 - 2550 mm Alu: free up to 2550 in steps of 5 mm
Lift arm lengths	820 - 880 - 940 - 1000 - 1200 mm
Lift arm widths	800 - 1150 - 1300 - 1550 mm
Standard control unit	Exterior control box with joystick, turn button safety switch, and battery isolator switch (S008.BT)



→ Cantilever lift for trucks, trailers and semi-trailers

DH-LSU.60 • 4000 - 6000 kg



The heavy duty lift DH-LSU.60 is designed for **extreme lift capacities from 4,000 to 6,000 kg**, and is mainly used for the transport of heavy machinery, forklifts, agricultural tractors etc...

The steel platform can be extended to form the rear closure of the vehicle body, and can be modified so that it can be inclined in ramp position (option S408).

Hydraulic stabilising legs are standard on the DH-LSU.60. It is important to have the chassis sufficiently reinforced for the mounting of this type of tail lift.

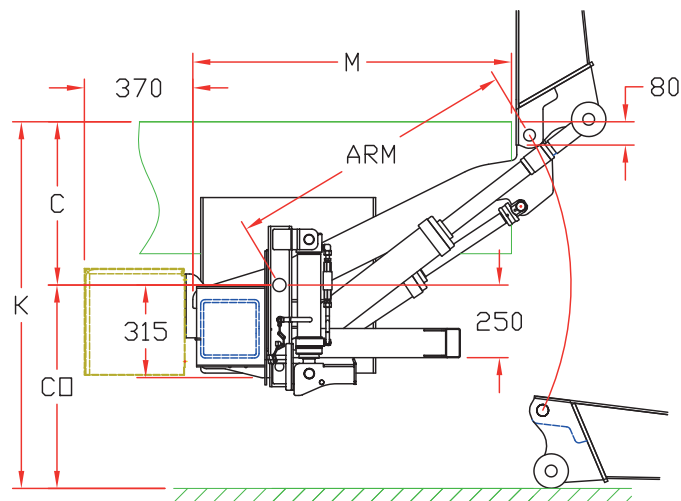
Lift capacity

CAP	CG	LM
4000 kg	1000 mm	40 kNm
5000 kg	1000 mm	50 kNm
6000 kg	1000 mm	60 kNm

Weights [see pg. 11]

STEEL platform	
2000 mm	1130 kg
Weights incl. CE bumper	

Beyond competition: extreme lift capacities to 6T



Fitting dimensions

ARM		1000
K max.		1610
C max.		775
C min.		200
CO max.		835
M	at C max.	920 (+375) (*)
M	at C min.	1225 (+375) (*)

(*) incl. power pack fitted centrally at the front of the lift frame

Technical specifications

Lift frame	200 x 200 mm
Cylinders	2 lift cylinders + 2 tilt cylinders
Automatic tilt at ground level	Yes, with hydraulic memory cylinder
Platform material	Reinforced steel platform
Platform overlap under floor	-80 mm (straight platform edge S245.F)
Standard platform depths	Steel: 2000 mm (max. 4500)
Standard platform widths	Steel: 2350 - 2480 - 2500 - 2520 - 2550 mm
Lift arm lengths	1000 mm
Lift arm widths	1200 - 1400 - 1600 mm
Standard control unit	Exterior control box with joystick, turn button safety switch, and battery isolator switch (S008.BT)



→ Cantilever lift for trucks, trailers and semi-trailers

DH-LSU.90 • 7500 - 9000 kg



The heavy duty lift DH-LSU.90 is designed for **extreme lift capacities from 7,500 to 9,000 kg**, and is mainly used for the transport of heavy machinery, forklifts, agricultural tractors etc...

The steel platform can be extended to form the rear closure of the vehicle body, and can be modified so that it can be inclined in ramp position (option S408).

Hydraulic stabilising legs are standard on the DH-LSU.90. It is important to have the chassis sufficiently reinforced for the mounting of this type of tail lift.

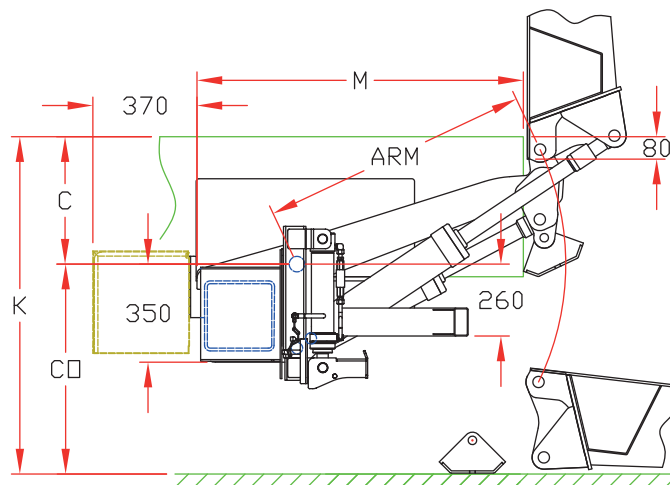
Lift capacity

CAP	CG	LM
7500 kg	1000 mm	75 kNm
9000 kg	1000 mm	90 kNm

Weights [see pg. 11]

STEEL platform	
2000 mm	1500 kg
Weights incl. CE bumper	

The absolute top: extreme lift capacities up to 9T



Fitting dimensions

ARM		960
K max.		1460
C max.		625
C min.		200
CO max.		835
M	at C max.	1065 (+370) (*)
M	at C min.	1260 (+370) (*)

(*) incl. power pack fitted centrally at the front of the lift frame

Technical specifications

Lift frame	250 x 250 mm
Cylinders	2 lift cylinders + 2 tilt cylinders
Automatic tilt at ground level	Yes, with hydraulic memory cylinder
Platform material	Reinforced steel platform
Platform overlap under floor	-80 mm (straight platform edge S245.F)
Standard platform depths	Steel: 2000 mm (max. 4500)
Standard platform widths	Steel: 2350 - 2480 - 2500 - 2520 - 2550 mm
Lift arm lengths	960 mm
Lift arm widths	1200 - 1400 - 1600 mm
Standard control unit	Exterior control box with joystick, turn button safety switch, and battery isolator switch (S008.BT)



→ Cantilever lift for short overhang

DH-LSP4.10 • 500 - 1000 kg



The DH-LSP4 is equipped with a compact lift frame and **very short lift arms**.

It is ideal for bespoke fitting situations where the standard models DH-LC.07, DH-LM.10 or DH-LMQ.07 / 10 cannot be used. Mostly, this is for commercial vehicles with insufficient overhang behind the mudguard, or behind the spring hangers of the mechanical vehicle suspension.

The 4-cylinder construction guarantees optimal platform stability in longitudinal and lateral direction.

Lift capacity

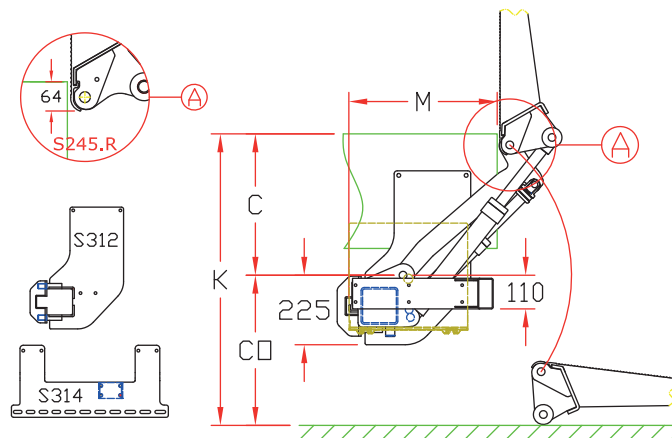
CAP	CG	LM
500 kg	500 mm	2.5 kNm
750 kg	600 mm	4.5 kNm
1000 kg	600 mm	6 kNm

Weights [see pg. 11]

ALU platform	
1250 mm	210 kg
1450 mm	218 kg
1600 mm	224 kg
1800 mm	234 kg

Weights incl. CE bumper

Adapted for very short overhangs



Fitting dimensions

ARM		550
K max.		920
C max.		465
C min.		200
CO max.		455
M	at C max.	480
M	at C min.	660

Technical specifications

Lift frame	120 x 120 mm
Cylinders	2 lift cylinders + 2 tilt cylinders
Automatic tilt at ground level	Yes, with hydraulic memory cylinder
Platform material	Aluminium
Platform overlap under floor	-64 mm
Standard platform depths	Alu: 1250-1450-1600-1800 mm (max. 2000)
Standard platform widths	Alu: Free up to 2550 in steps of 5 mm
Lift arm lengths	550 mm
Lift arm widths	510 - 1200 - 1280 mm
Standard control unit	Exterior control box with joystick, turn button safety switch, and battery isolator switch (S008.BT)



→ Cantilever lift for short overhang

DH-LMP.20 • 1500 - 2000 kg



The DH-LMP.20 is equipped with a **compact lift frame**, that requires 100 mm less overhang than the standard model DH-LM.20. It is specially adapted to suit trucks, trailers and semi-trailers with a **very short overhang** behind the rear axle or the spring hangers on the vehicle chassis (e.g. military trucks, city-trailers with rear steering axle,...)

This compact 4-cylinder lift is available with reinforced steel platforms or light-weight aluminium platforms up to 2250 mm.

Lift capacity

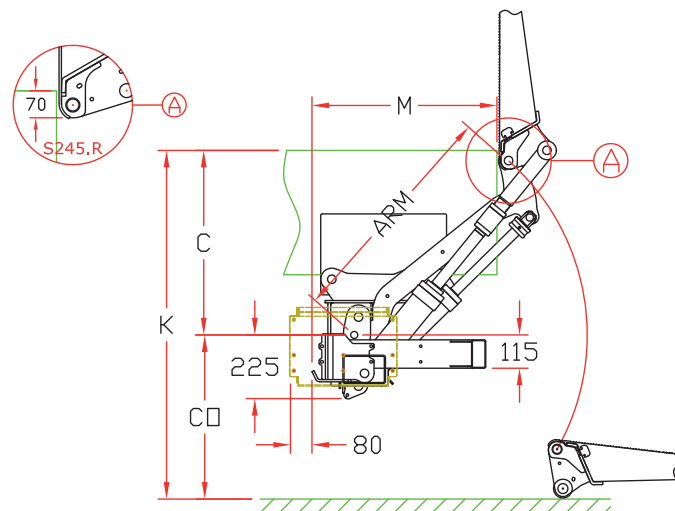
CAP	CG	LM
1500 kg	750 mm	11.25 kNm
2000 kg	750 mm	15 kNm

Weights [see pg. 11]

STEEL platform		ALU platform	
1500 mm	490 kg	1600 mm	400 kg
1750 mm	540 kg	1800 mm	415 kg
2000 mm	585 kg	2000 mm	430 kg

Weights incl. CE bumper

Cantilever lift for short overhang



Fitting dimensions

ARM		820	880	940	1000	1100
K max.		1305	1390	1490	1560	1725
C max.		675	720	770	815	895
C min.		300	350	400	400	450
CO max.		630	670	720	745	830
M	at C max.	630	670	700	740	800
M	at C min.	890	935	980	1050	1130

Technical specifications

Lift frame	Compact frame for very short overhang
Cylinders	2 lift cylinders + 2 tilt cylinders
Automatic tilt at ground level	Yes, mechanical
Platform material	Aluminium or steel
Platform overlap under floor	-70 mm
Standard platform depths	Steel: 1500 - 1750 - 2000 mm (max. 2100) Alu: 1600 - 1800 - 2000 mm (max. 2100)
Standard platform widths	Steel: 2350 - 2480 - 2500 - 2520 - 2550 mm Alu: free up to 2550 in steps of 5 mm
Lift arm lengths	820 - 880 - 940 - 1000 - 1100 mm
Lift arm widths	1150 - 1300 - 1550 mm
Standard control unit	Exterior control box with joystick, turn button safety switch, and battery isolator switch (S008.BT)



→ Cantilever lift for trucks with trailer coupling

DH-LV.40 • 1500 - 4000 kg



The **DH-LV** is designed for **trucks with a draw bar coupling** mounted below the vehicle chassis, to function in combination with a **centre-axle trailer**.

It is equipped with an **articulated bumper bar**, that can be lowered to legal bumper height when the truck drives SOLO, and can be lifted out of way when the trailer is COUPLED to the truck. The DH-LV allows the operator to load / unload the truck without uncoupling the trailer.

Lift capacity

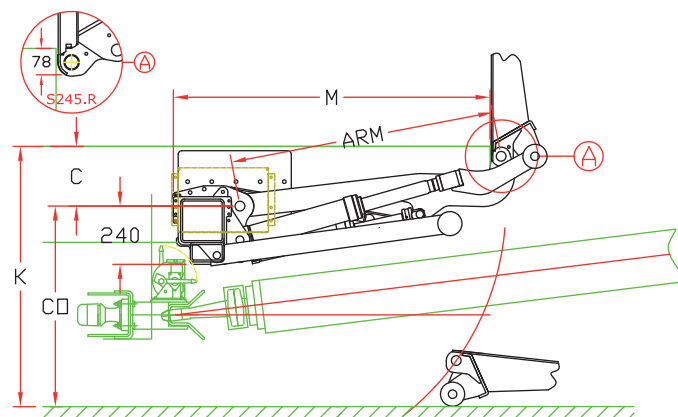
CAP	CG	LM
1500 kg	1000 mm	15 kNm
2000 kg	1000 mm	20 kNm
2500 kg	1000 mm	25 kNm
3000 kg	1000 mm	30 kNm
3500 kg	1000 mm	35 kNm
4000 kg	1000 mm	40 kNm

Weights [see pg. 11]

STEEL platform		ALU platform	
1750 mm	655 kg	1800 mm	535 kg
2000 mm	700 kg	2000 mm	550 kg

Weights incl. CE bumper

For truck-trailer combinations with draw bar



Fitting dimensions

ARM		1100
K max.		1660
C max.		730
C min.		150
CO max.		930
M	at C max.	1090
M	at C min.	1330

Technical specifications

Lift frame	Custom-made frame mounted between chassis & coupling
Cylinders	2 lift cylinders + 2 tilt cylinders
Automatic tilt at ground level	Yes, with hydraulic memory cylinder
Platform material	Aluminium or steel (alu = max. 3000 kg)
Platform overlap under floor	-78 mm
Standard platform depths	Steel: 1750 - 2000 mm (max. 4500) Alu: 1800 - 2000 mm (max. 4500)
Standard platform widths	Steel: 2350 - 2480 - 2500 - 2520 - 2550 mm Alu: free up to 2550 in steps of 5 mm
Lift arm lengths	1100 mm
Lift arm widths	1300 mm (other on request)
Standard control unit	Exterior control box with joystick, turn button safety switch, and battery isolator switch (S008.BT)



Special constructions on demand

DH-KA.20 Option S401

750 - 2000 kg
Special adaption for
tipper vehicles



Option S239

Horizontally foldable
platform for reduced
wind resistance
and increased fuel
efficiency



Option S238

Vertically folding
platform for long
objects protruding
beyond the rear of the
vehicle body



DH-LM.30.03 Option S403

1500-3000 kg
Special adaption with
adjustable bumper
bar (in height and
depth), and double
acting tilt cylinders



Option S242

1500-3000 kg
DH-LMI platform with
insulated panel, for
refrigerated bodies



DH-LK.15

1250 - 1500 kg
Flat platform, ideal
for roll cages and
top-heavy loads (e.g.
gas bottles)



Slider lifts



4



→ Slider lift for vans and light trucks

DH-SC.04 • 400 kg



The **CITY SLIDER lift** DH-SC.04 is specially designed for mounting on van chassis and light commercial trucks.

In its travel position, the platform is safely stored underneath the chassis of the vehicle, and the driver has free access to the cargo space inside the vehicle.

In its work position, the platform offers sufficient work surface to manipulate roll-cages, white and brown goods, parcels, etc...

Thanks to its low weight and high flexibility, the DH-SC.04 is ideal for the **urban distribution**.

To keep this lift light, simple and budget friendly, the retraction of the platform is done by hand.

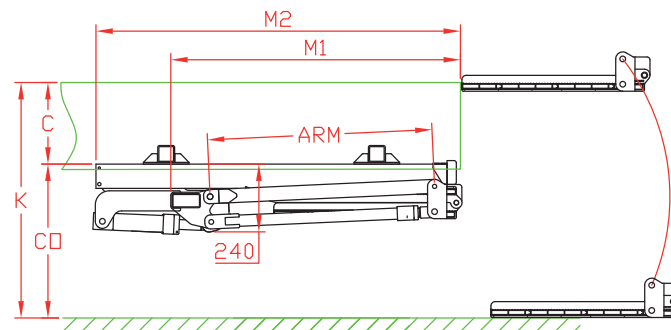
Lift capacity

CAP	CG	LM
400 kg	500 mm	2 kNm

Weights [see pg. 11]

ALU / ALU platform	
1400x860 mm	150 kg

City Slider lift with manual retraction



Fitting dimensions

ARM	800 standard	900 optional	950 optional
K max.	1100	1250	1320
C max.	400	495	535
CO max.	700	755	785
M1	1040	1140	1190
M2	1300	1400	1450

Technical specifications

Lift frame	100 x 50 mm
Cylinders	2 lift cylinders + 2 fixed stabilisers
Retraction IN / OUT	Manual
Automatic tilt at ground level	Not needed, flat platform for easy access
Platform material	Steel frame + aluminium profiles
Standard platform depths	1400 mm Other platform depths on request
Standard platform widths	860 - 1100 mm
Lift arm lengths	800 mm 900 - 950 mm on request
Lift arm widths	930 mm (platform width 860) 1170 mm (platform width 1100)
Standard control unit	2-button control integrated in the power pack



→ Slider lift for vans and light trucks

DH-SC.05 • 500 kg



The DH-SC.05 is the **heavy-duty** version of the **CITY SLIDER lift**, and is usually mounted on van chassis and light commercial trucks.

In its travel position, the platform is safely stored underneath the chassis of the vehicle, and the driver has free access to the cargo space inside the vehicle.

In its work position, the platform offers sufficient work surface to manipulate roll-cages, white and brown goods, parcels, etc...

In comparison, the DH-SC.05 is heavier duty than the .04 version (see previous page), and is equipped with **hydraulic instead of manual retraction**.

Lift capacity

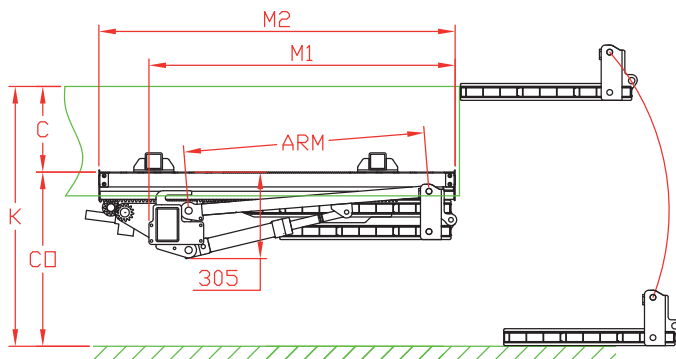
CAP	CG	LM
500 kg	500 mm	2.5 kNm

Weights [see pg. 11]

ALU / ALU platform	
1400x860 mm	210 kg
1400x1100 mm	215 kg

Weights incl. CE bumper (option S362.SC)

City Slider lift with hydraulic retraction



Fitting dimensions

ARM	850
K max.	1200
C max.	400
CO max.	800
M1	1080
M2	1260

Technical specifications

Lift frame	120 x 80 mm
Cylinders	2 lift cylinders + 2 fixed stabilisers
Retraction IN / OUT	Hydromotor + gear wheel system
Automatic tilt at ground level	Not needed, flat platform for easy access
Platform material	Steel frame + aluminium profiles
Standard platform depths	1400 mm Other platform depths on request
Standard platform widths	860 - 1100 mm
Lift arm lengths	850 mm
Lift arm widths	1060 mm (platform width 860) 1300 mm (platform width 1100)
Standard control unit	Exterior control box with joystick, turn button safety switch, and battery isolator switch (S008.BT)



→ Slider lift for light and medium size trucks

DH-SM.15 • 1000 - 1500 kg



The DH-SM.15 is the **lightest of the conventional slider lifts** with single fold platforms. It is equipped with a compact lift frame and short lift arms, in order to minimize the required overhang, and forms an ideal fit for light and medium capacity trucks of 7.5 to 12T GVW.

In it's travel position, the DH-SM.15 is **safely stored** underneath the chassis of the vehicle. It is ideal for frequent fork lift and dock loading operations, for demountable bodies, for occasional use, and all applications requiring quick and free access to the cargo space.

Lift capacity

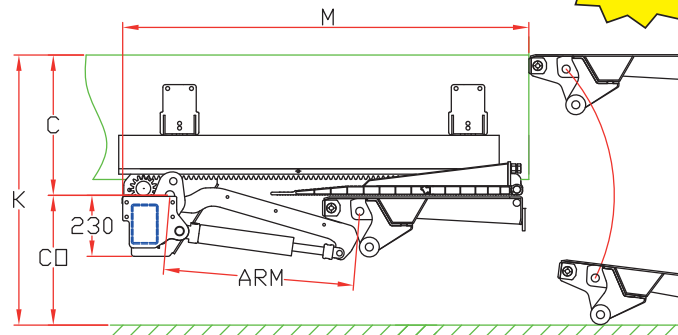
CAP	CG	LM
1000 kg	600 mm	6 kNm
1500 kg	750 mm	11.25 kNm

Weights [see pg. 11]

STEEL / ALU		ALU / ALU	
1500 mm	370 kg	1500 mm	340 kg
1700 mm	390 kg	1700 mm	355 kg
1800 mm	400 kg	1800 mm	362 kg

Light 4-cylinder slider lift, single fold platform

2012



Fitting dimensions

ARM		720	800	880
K max.		1185	1290	1400
C max.		600	660	700
CO max.		585	630	700
M	1500 mm platform	1520	1600	1680
M	1700 mm platform	1620	1700	1780
M	+ option S245.5	-100	-100	-100

Technical specifications

Lift frame	100 x 150 mm
Cylinders	2 lift cylinders + 2 tilt cylinders
Retraction IN / OUT	Hydromotor + gear wheel system
Automatic tilt at ground level	Yes, mechanical
Platform material	Steel / alu & alu / alu
Standard platform depths	1500 - 1700 - 1800 mm
Standard platform widths	2100 - 2300 Other widths on request (S261)
Lift arm lengths	720 - 800 - 880 mm
Lift arm widths	1300 mm
Standard control unit	Exterior control box with joystick, turn button safety switch, and battery isolator switch (S008.BT)

Remark: model year 2012. All data are provisional



→ Slider lift for trucks, trailers and semi-trailers

DH-SM(R).20 • 1500 - 2000 kg



The DH-SM(R).20 is the **top seller slider lift in the medium capacity range**. This versatile lift is able to handle various types of cargo, including pallets, up to max. 2000 kg.

In its travel position, the DH-SM is **safely stored underneath the chassis of the vehicle**. It is ideal for frequent fork lift and dock loading operations, for demountable bodies, for occasional use, and all applications requiring quick and free access to the cargo space.

There are 2 executions: the DH-SM.20 designed for **truck chassis**, and the DH-SMR.20 designed for **quick-fitting on trailer and semi-trailer chassis**.

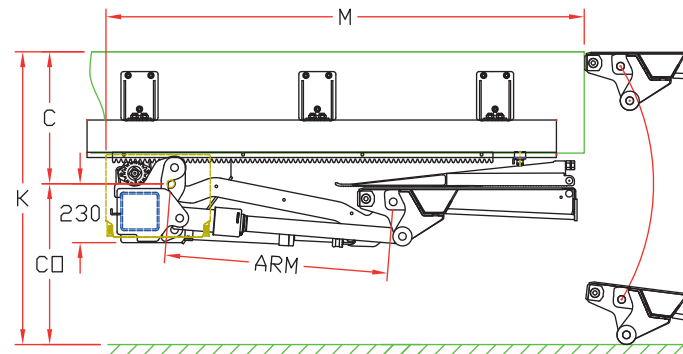
Lift capacity

CAP	CG	LM
1500 kg	750 mm	11.25 kNm
2000 kg	750 mm	15 kNm

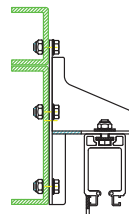
Weights [see pg. 11]

STEEL / ALU		ALU / ALU	
1500 mm	475 kg	1500 mm	445 kg
1700 mm	495 kg	1700 mm	460 kg
1800 mm	505 kg	1800 mm	467 kg

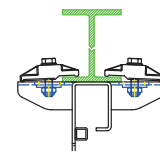
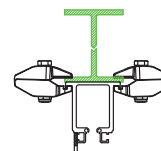
Standard 4-cylinder slider lift, single fold platform



Truck / DH-SM.20



Trailer / Semi-trailer / DH-SMR.20
Standard S430.A
Optional S430.S



Fitting dimensions

ARM		820	880	940	1000	1100
K max.		1305	1390	1490	1560	1725
C max.		675	720	770	815	895
CO max.		630	670	720	745	830
M	1500 mm platform	1700	1760	1820	1880	1980
M	1700 mm platform	1800	1860	1920	1980	2080
M	+ option S245.S	-100	-100	-100	-100	-100

Technical specifications

Lift frame	150 x 150 mm
Cylinders	2 lift cylinders + 2 tilt cylinders
Retraction IN / OUT	Hydromotor + gear wheel system
Automatic tilt at ground level	Yes, mechanical
Platform material	Steel / alu or alu / alu
Standard platform depths	1500 - 1700 - 1800 mm Longer platforms on request (S205 - max. 2000)
Standard platform widths	2100 - 2300 - 2400 mm Other widths on request (S261)
Lift arm lengths	820 - 880 - 940 - 1000 - 1100 mm
Lift arm widths	800 - 1300 - 1550 mm
Standard control unit	Exterior control box with joystick, turn button safety switch, and battery isolator switch (S008.BT)



→ Slider lift for trucks, trailers and semi-trailers

DH-SM(R).30 • 2000 - 3000 kg



The DH-SM(R).30 is the **heavy duty slider lift**. Its robust lift mechanism, reinforced platform and hydraulic system are designed for intensive, heavy duty applications and “hostile environment” circumstances. Hence, this lift is perfectly suited for the **intensive distribution market** (e.g. food & drinks distribution).

DHOLLANDIA's top of the range **4-cylinder** slider lift is available in 2 executions: the DH-SM.30 designed for **truck chassis**, and the DH-SMR.30 designed for **quick-fitting on trailer and semi-trailer** chassis.

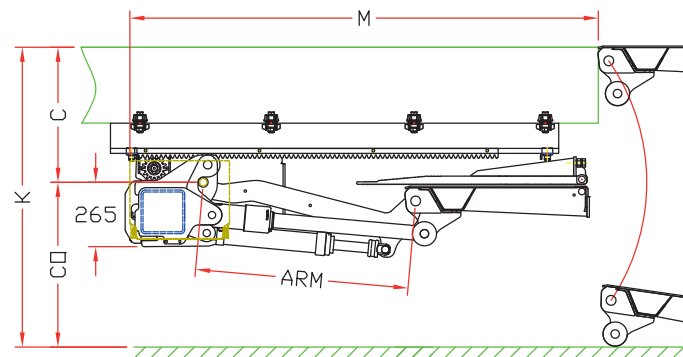
Lift capacity

CAP	CG	LM
2000 kg	750 mm	15 kNm
2500 kg	750 mm	18.75 kNm
3000 kg	750 mm	22.50 kNm

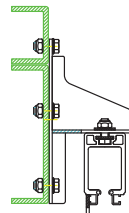
Weights [see pg. 11]

STEEL / ALU		ALU / ALU	
1700 mm	580 kg	1700 mm	530 kg
1800 mm	590 kg	1800 mm	540 kg

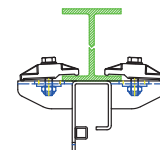
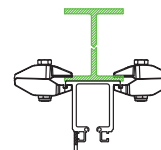
Heavy duty 4-cylinder slider lift, single fold platform



Truck / DH-SM.30



Trailer / Semi-trailer / DH-SMR.30
Standard S430.A
Optional S430.S



Fitting dimensions

ARM		880	940	1000	1100	1200
K max.		1420	1500	1590	1730	1870
C max.		730	780	820	900	980
CO max.		690	720	770	830	890
M	1700 mm platform	1890	1950	2010	2110	2210
M	1800 mm platform	1990	2050	2110	2210	2310
M	+ option S245.S	-100	-100	-100	-100	-100

Technical specifications

Lift frame	180 x 180 mm
Cylinders	2 lift cylinders + 2 tilt cylinders
Retraction IN / OUT	Hydromotor + gear wheel system
Automatic tilt at ground level	Yes, mechanical
Platform material	Steel / alu or alu / alu
Standard platform depths	1700 - 1800 mm Longer platforms on request (S205)
Standard platform widths	2300 - 2400 mm Other widths on request (S261)
Lift arm lengths	880 - 940 - 1000 - 1100 - 1200 mm
Lift arm widths	800 - 1300 - 1550 mm
Standard control unit	Exterior control box with joystick, turn button safety switch, and battery isolator switch (S008.BT)



→ Slider lift for trucks, trailers and semi-trailers

DH-SMP.20 • 1500 - 2000 kg



The DH-SMP can replace the standard DH-SM to solve a number of mounting issues.

It is equipped with a compact lift frame, that requires **90 mm less overhang** than a DH-SM with equivalent platform.

It slides in / out by means of a centrally mounted retraction cylinder, as alternative to the DH-SM hydromotor with gear wheel and transfer bar (the transfer bar between the 2 gear wheels passes just under the chassis).

And it can be mounted around and **alongside the spring hangers** of vehicles with mechanical suspension, and **use the full overhang to the mudguard**.

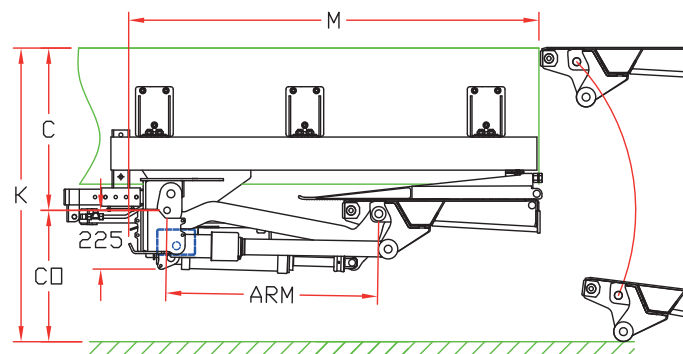
Lift capacity

CAP	CG	LM
1500 kg	750 mm	11.25 kNm
2000 kg	750 mm	15 kNm

Weights [see pg. 11]

STEEL / ALU		ALU / ALU	
1500 mm	500 kg	1500 mm	470 kg
1700 mm	520 kg	1700 mm	485 kg
1800 mm	530 kg	1800 mm	492 kg

Single fold platform with shorter overhang



Fitting dimensions

ARM		820	880	940	1000	1100
K max.		1305	1390	1490	1560	1725
C max.		675	720	770	815	895
CO max.		630	670	720	745	830
M	1500 mm platform	1590	1650	1710	1770	1870
M	1700 mm platform	1690	1750	1810	1870	1970
M	+ option S245.S	-100	-100	-100	-100	-100

Overhang measured to the end of the lift frame. Retraction cylinder between chassis rails not taken into account

Technical specifications

Lift frame	Compact lift frame for short overhang
Cylinders	2 lift cylinders + 2 tilt cylinders
Retraction IN / OUT	Centrally mounted retraction cylinder
Automatic tilt at ground level	Yes, mechanical
Platform material	Steel / alu or alu / alu
Standard platform depths	1500 - 1700 - 1800 mm Longer platforms on request (S205)
Standard platform widths	2100 - 2300 - 2400 mm Other widths on request (S261)
Lift arm lengths	820 - 880 - 940 - 1000 - 1100 mm
Lift arm widths	1300 - 1550 mm
Standard control unit	Exterior control box with joystick, turn button safety switch, and battery isolator switch (S008.BT)



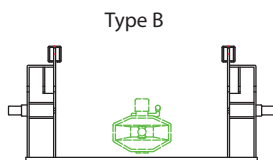
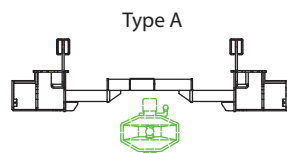
→ Slider lift for trucks with trailer coupling

DH-SV.20 • 1500 - 2000 kg



The **DH-SV** is designed for **trucks with a central-axle draw bar trailer**. In order to optimize the mounting situation, the DH-SV is **custom made** in function of the specific dimensions of the chassis, the trailer coupling and the draw bar.

Depending on the vehicle dimensions, the DH-SV can be deployed and used without uncoupling the trailer (when type A lift frame can be used, which is in most cases).



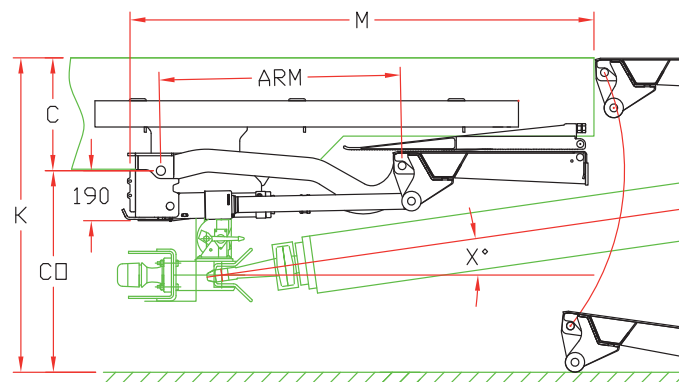
Lift capacity

CAP	CG	LM
1500 kg	750 mm	11.25 kNm
2000 kg	750 mm	15 kNm

Weights [see pg. 11]

STEEL / ALU		ALU / ALU	
1500 mm	580 kg	1500 mm	550 kg
1700 mm	600 kg	1700 mm	565 kg

Designed for trucks with a draw-bar trailer



Fitting dimensions

ARM		820	880	940	1000
K max.		1360	1460	1560	1660
C max.		650	700	750	800
CO max.		710	760	810	860
M (1) (2)	1500 mm platform	1600	1660	1720	1780
M (1) (2)	1700 mm platform	1700	1760	1820	1880
M (1) (2)	+ option S245.S	-100	-100	-100	-100

(1) In order to create sufficient clearance to the draw bar, the lift might need to be fitted further forward. Consult DHOLLANDIA for a detailed study.

(2) Overhang measured to the end of the lift frame. Retraction cylinder between chassis rails not taken into account

Technical specifications

Lift frame	Custom made around the coupling
Cylinders	2 lift cylinders + 2 tilt cylinders
Retraction IN / OUT	Centrally mounted retraction cylinder
Automatic tilt at ground level	Yes, with hydraulic memory cylinder
Platform material	Steel / alu or alu / alu
Standard platform depths	1500 - 1700 - 1800 mm Longer platforms on request (S205)
Standard platform widths	2300 - 2400 mm Other widths on request (S261)
Lift arm lengths	820 - 880 - 940 - 1000 mm
Lift arm widths	1300 - 1450 - 1550 mm
Standard control unit	Exterior control box with joystick, turn button safety switch, and battery isolator switch (S008.BT)



→ Slider lift for light trucks, trailers and semi-trailers

DH-SMO.10 • 750 - 1000 kg



In comparison to the standard slider lifts DH-SM(R), the **DH-SMO** is equipped with a **double folded platform**. The platform is folded twice and rests on the lift arms when stowed away in its travel position.

As a result, the DH-SMO.10 is extremely suitable for all trucks from 3.5 to 12T GVW, light trailers and semi-trailers featuring **too short an overhang** to mount slider lifts with single-folded platforms (e.g. semi-trailers with rear steering axle or centre-axle trailers).

The DH-SMO serves the lower capacities of 750 - 1000 kg.

Lift capacity

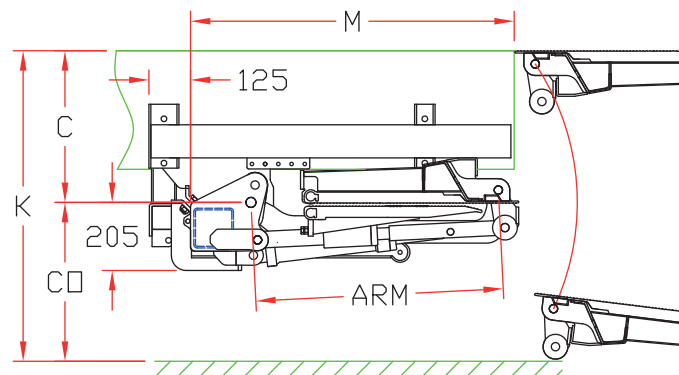
CAP	CG	LM
750 kg	600 mm	4.5 kNm
1000 kg	600 mm	6 kNm

Weights [see pg. 11]

ALU / ALU	
1250x2200 mm	355 kg (1)
1450x2200 mm	370 kg (1)

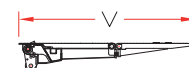
(1) Even lighter version expected in 2012

Double folded platform for vehicles with short overhang



Fitting dimensions

ARM	750	850
K max.	1210	1400
C max.	600	700
CO max.	610	700
M	1015	1115
V max.	1250	1450



Technical specifications

Lift frame	120 x 120 mm
Cylinders	2 lift cylinders + 2 tilt cylinders
Retraction IN / OUT	Centrally mounted retraction cylinder
Automatic tilt at groundlevel	Yes, mechanical
Platform material	Alu / alu
Standard platform depths	1250 - 1450 mm 1550 mm on request (S205)
Standard platform widths	2200 mm Other widths on request (S261)
Lift arm lengths	750 - 850 mm
Lift arm widths	550 - 1400 - 1650 mm
Standard control unit	Exterior control box with joystick, turn button safety switch, and battery isolator switch (S008.BT)



→ Slider lift for trucks, trailers and semi-trailers

DH-SO7.20 • 1500 - 2000 kg



In comparison to the standard slider lifts DH-SM(R), the **DH-SO7** is equipped with a **double folded platform**. The platform is folded twice and rests on the lift arms when stowed away in its travel position.

As a result, the DH-SO7 is extremely suitable for all trucks from 7 to 26T GVW, trailers and semi-trailers featuring **too short an overhang** to mount slider lifts with single-folded platforms (e.g. semi-trailers with rear steering axle or centre-axle trailers).

With lift capacities of 1500 - 2000 kg, the DH-SO7 serves the top segment of the slider lifts with double folding platforms.

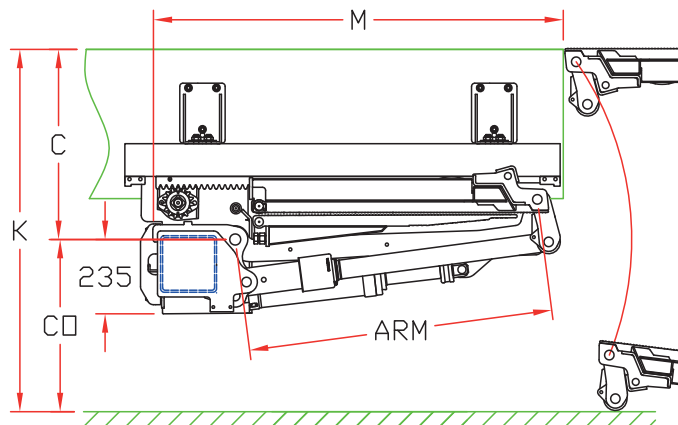
Lift capacity

CAP	CG	LM
1500 kg	750 mm	11.25 kNm
2000 kg	750 mm	15 kNm

Weights [see pg. 11]

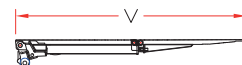
ALU / ALU	
1400 mm	485 kg
1600 mm	505 kg
1800 mm	530 kg

Double folded platform for vehicles with short overhang



Fitting dimensions

ARM	780	880	980	1080
K max.	1290	1440	1560	1760
C max.	640	710	780	880
CO max.	650	730	780	880
M	1125	1225	1325	1425
V max.	1400	1600	1800	1800



Technical specifications

Lift frame	180 x 180 mm
Cylinders	2 lift cylinders + 2 tilt cylinders
Retraction IN / OUT	Hydromotor + gear wheel system
Automatic tilt at ground level	Yes, with hydraulic memory cylinder
Platform material	Alu / alu
Standard platform depths	1400 - 1600 - 1800 mm
Standard platform widths	2300 - 2400 mm Other widths on request (S261)
Lift arm lengths	780 - 880 - 980 - 1080 mm
Lift arm widths	800 - 1450 - 1550 mm
Standard control unit	Exterior control box with joystick, turn button safety switch, and battery isolator switch (S008.BT)



→ Slider lift for trucks, trailers and semi-trailers with demountable containers

DH-SO8.20 • 1500 - 2000 kg



The DH-SO8 is equipped with a **double folded platform**, like the DH-SO7, to enable its installation in a very short overhang.

Additionally, the DH-SO8 is specially designed for commercial vehicles with **BDF / AWL swap bodies**. The front edge of the platform can be equipped with an articulated bridge plate (option S241), allowing for flexible adjustment of the platform edge to varying body types and dimensions.

The platform consists of 3 sections: a robust steel section, which also forms the bumper; and 2 aluminium folding sections.

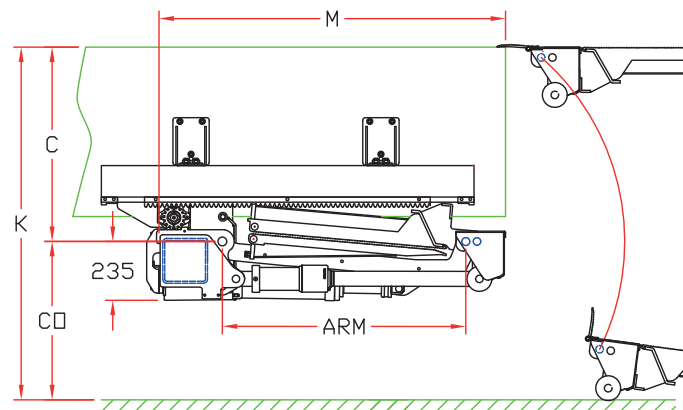
Lift capacity

CAP	CG	LM
1500 kg	750 mm	11.25 kNm
2000 kg	750 mm	15 kNm

Weights [see pg. 11]

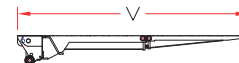
STEEL / ALU / ALU	
1600 mm	580 kg
1800 mm	600 kg

Double folded platform, for swap bodies & containers



Fitting dimensions

ARM	980	1080
K max.	1585	1685
C max.	780	880
CO max.	805	805
M	1420	1520
V max.	1800	1800



Technical specifications

Lift frame	180 x 180 mm
Cylinders	2 lift cylinders + 2 tilt cylinders
Retraction IN / OUT	Hydromotor + gear wheel system
Automatic tilt at ground level	Yes, hydraulic
Platform material	Steel / alu / alu
Standard platform depths	1600 - 1800 mm
Standard platform widths	2300 mm Other widths on request (S261)
Lift arm lengths	980 - 1080 mm
Lift arm widths	1300 mm
Standard control unit	Exterior control box with joystick, turn button safety switch, and battery isolator switch (S008.BT)



→ Slider lift for trucks & semi-trailers

DH-SK(S).20 • 1000 - 2000 kg



The DH-SK... series combines the functionality of a **flat “column lift” platform** with the advantages of a slider lift.

The flat platform is ideal to lift & lower roll cages (at the ground, the platform of conventional slider lifts has the shape of a wedge, so that wheeled loads have a tendency to roll off).

The sliding mechanism safely stores the platform away underneath the chassis of the vehicle, reducing significantly the damage that column lifts incur when reversing into the loading docks.

Most DH-SK are supplied with rear & side loading ramps, which can be raised in vertical position to serve as load restraints.

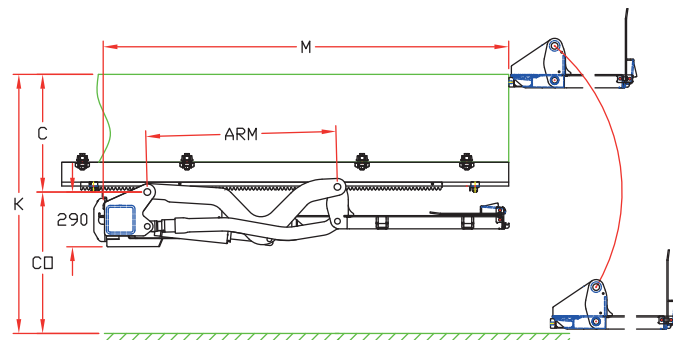
Lift capacity

CAP	CG	LM
1500 kg	750 mm	11.25 kNm
2000 kg	750 mm	15 kNm

Weights [see pg. 11]

DH-SKS.20.01	
1300 mm	670 kg
1500 mm	670 kg
1700 mm	685 kg

Ideal for roll cages: flat “column lift” style platform



Fitting dimensions

ARM		900	1000	900
		SK(S)	SK(S)	SKS2
K max.		1350	1525	1410
C max.		560	640	725
CO max.		790	885	685
M - SK(S).20.01	1300 mm platform	2250	2350	-
M - SK(S).20.02	1300 mm platform	2125	2225	-
M - SKS2.20.01	1300 mm platform	-	-	2100

Technical specifications

Lift frame	SK(S).20.01: 180 x 180 mm
	SK(S).20.02: compact frame / short overhang
	SKS2.20.01: 180 x 180 mm
Cylinders	SK...: 2 lift cylinders + 2 tilt cylinders
	SKS...: 2 lift cylinders + 2 fixed stabilisers
Retraction IN / OUT	Hydromotor + gear wheel system
Automatic tilt at ground level	Not needed, flat platform
Standard platform depths	1300 mm in 1 piece (steel)
	1500 - 1700 mm as foldable platform (steel / alu)
Platform width PB / arm width CA	SK(S).20.01: PB=2350 CA=2250 PB=2450 CA=2350 PB=2550 CA=2450
	SK(S).20.02: PB=2350 CA=2250 PB=2450 CA=2350
	SKS2.20.01: PB=2450 CA=2280
Lift arm lengths	900 - 1000 mm
Standard control unit	Exterior control box with joystick, turn button safety switch, and battery isolator switch (S008.BT)

Tuck-away lifts



5



→ Tuck-away lift for light commercial vehicles

DH-RC(C).10 • 750 - 1000 kg



In its travel position, the DH-RC.10 is safely stored underneath the chassis of the vehicle. It is ideal for frequent fork lift and dock loading operations, demountable bodies, and all applications requiring free access to the cargo space.

The DH-RC.10 is the **lightest of tuck-away lifts**. The relatively short platforms are more recommended for roll cages, white and brown goods, parcels, etc... than for pallet work.

There are 2 executions: the DH-RC.10 with fixed stabilisers, and the DH-RCC.10 with tilt cylinders and **adjustable platform orientation**.

Lift capacity

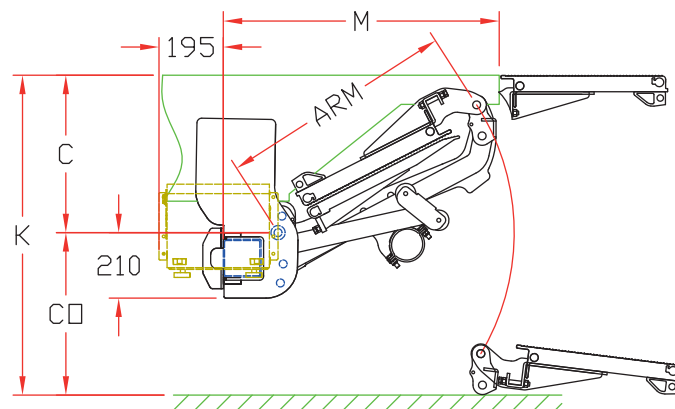
CAP	CG	LM
750 kg	600 mm	4.5 kNm
1000 kg	600 mm	6 kNm

Weights [see pg. 11]

ALU / ALU platform	
1080 mm	275 kg
1280 mm	290 kg

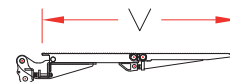
Weights incl. CE bumper

Light tuck-away lift for the smaller cargo



Fitting dimensions

ARM		750	850
K max.		1180	1310
C max.		580	660
C min.		350	400
CO max.		600	650
M	at C max.	810	895
M	at C min.	980	1070
V max.		1080	1280



Technical specifications

Lift frame	120 x 120 mm
Cylinders	1 lift cylinder + 2 tilt cylinders (DH-RCC) or 2 fixed stabilisers (DH-RC)
Platform shape	Conical, wedged platform
Automatic tilt at ground level	Yes, mechanical
Platform material	Alu / alu
Standard platform depths	1080 - 1280 mm
Standard platform widths	2000 - 2200 mm Other widths on request (option S261)
Lift arm lengths	750 - 850 mm
Lift arm widths	600 mm
Mounting	• With floor plate (option S351) • Adapted for refrigerated floor (option S409)
Standard control unit	Exterior control box with joystick, turn button safety switch, and battery isolator switch (S008.BT)



→ Tuck-away lift for trucks, trailers & semi-trailers

DH-RC.20 • 1000 - 2000 kg



In its travel position, the DH-RC.20 is safely stored underneath the chassis of the vehicle. It is ideal for frequent fork lift and dock loading operations, demountable bodies, and all applications requiring free access to the cargo space.

The DH-RC.20 is the **medium size tuck-away lift**. The relatively short platforms are more recommended for roll cages, white and brown goods, parcels, etc... than for pallet work.

It is only available with fixed stabilisers, not with tilt cylinders.

Lift capacity

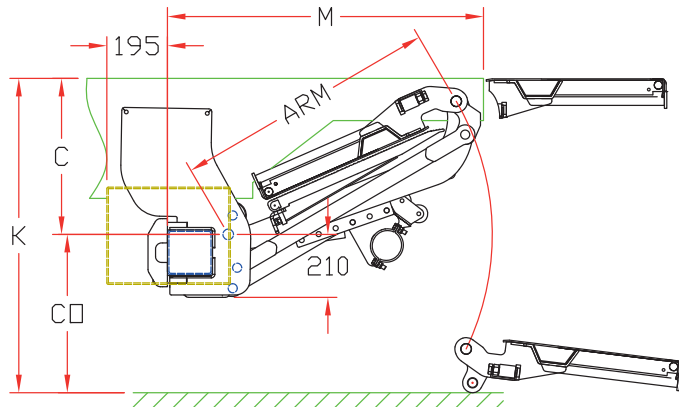
CAP	CG	LM
1000 kg	600 mm	6 kNm
1500 kg	600 mm	9 kNm
2000 kg	600 mm	12 kNm

Weights [see pg. 11]

ALU / ALU		STEEL / ALU	
1250 mm	345 kg	1250 mm	360 kg
1450 mm	355 kg	1450 mm	375 kg

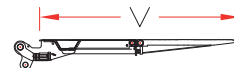
Weights incl. CE bumper

Medium capacity tuck-away lift



Fitting dimensions

ARM		880	980
K max.		1385	1505
C max.		745	850
C min.		450	450
CO max.		640	655
M	at C max.	870	905
M	at C min.	1120	1230
V max.		1250	1450



Technical specifications

Lift frame	150 x 150 mm
Cylinders	1 lift cylinder + 2 fixed stabilisers
Platform shape	Conical, wedged platform
Automatic tilt at ground level	Yes, mechanical
Platform material	Steel / alu • alu / alu
Standard platform depths	(1150) - 1250 - 1450 mm
Standard platform widths	2000 - 2200 mm Other widths on request (Option S261)
Lift arm lengths	880 - 980 mm
Lift arm widths	500 mm
Mounting	<ul style="list-style-type: none"> With floor plate (option S351) Adapted for refrigerated floor (S409)
Standard control unit	Exterior control box with joystick, turn button safety switch, and battery isolator switch (S008.BT)



→ Tuck-away lift for trucks, trailers & semi-trailers

DH-RM(C).20 • 1000 - 2000 kg



In its travel position, the DH-RM.20 is safely stored underneath the chassis of the vehicle. It is ideal for frequent fork lift and dock loading operations, demountable bodies, and all applications requiring free access to the cargo space.

It is equipped with a **robust lift frame** and 2 lift cylinders, and serves the **heavy-duty end of the tuck-away market**. The relatively short platforms are more recommended for roll cages, white and brown goods, parcels, etc... than for pallet work.

There are 2 executions: the DH-RM.20 with fixed stabilisers, and the DH-RMC.20 with tilt cylinders and **adjustable platform orientation**.

Lift capacity

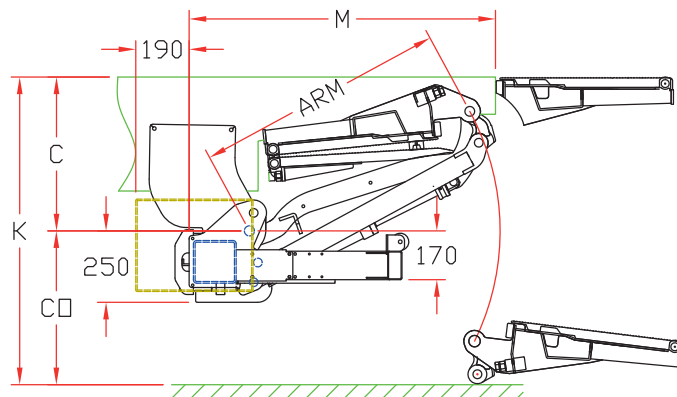
CAP	CG	LM
1000 kg	600 mm	6 kNm
1500 kg	600 mm	9 kNm
2000 kg	600 mm	12 kNm

Weights [see pg. 11]

ALU / ALU		STEEL / ALU	
1150 mm	410 kg	1150 mm	420 kg
1250 mm	415 kg	1250 mm	430 kg
1450 mm	425 kg	1450 mm	445 kg

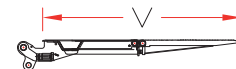
Weights incl. CE bumper

Heavy duty tuck-away lift with 2 lift cylinders



Fitting dimensions

ARM		880	1000	(1050)
K max.		1390	1550	1660
C max.		720	805	910
C min.		500	500	400
CO max.		670	745	750
M	at C max.	940	1050	970
M	at C min.	1125	1260	1300
V max		1250	1450	(1600)



Technical specifications

Lift frame	150 x 150 mm
Cylinders	2 lift cylinders + 2 tilt cylinders (DH-RMC) or 2 fixed stabilisers (DH-RM)
Platform shape	Conical, wedged platform
Automatic tilt at ground level	Yes, mechanical
Platform material	Steel / alu • alu / alu
Standard platform depths	1150 - 1250 - 1450 - (1600) mm 1600 mm on special request
Standard platform widths	2000 - 2200 mm 2350 mm on request (option S261)
Lift arm lengths	880 - 1000 - 1050 mm
Lift arm widths	1150 - 1400 mm
Mounting	• With floor plate (option S351) • Adapted for refrigerated floor (option S409)
Standard control unit	Exterior control box with joystick, turn button safety switch, and battery isolator switch (S008.BT)



→ Side mounted tuck-away lift for trucks, trailers & semi-trailers

DH-REK.10 • 1000 kg



The DH-REK is a bespoke tuck-away lift, adapted **for fitting at the side** of commercial vehicles. It enables to load and unload merchandise through the side doors of the body.

The solid arm construction with 1 central lift cylinder guarantees maximum platform stability. The platform is equipped with automatic tilt at ground level.

The relatively short platforms are more recommended for roll cages and parcels, than for pallet work.

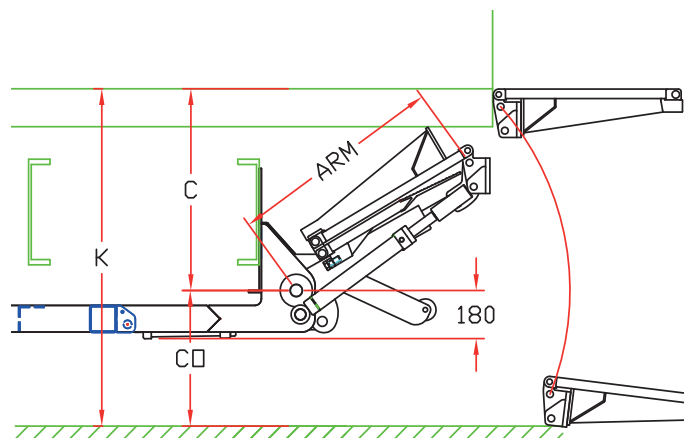
Lift capacity

CAP	CG	LM
1000 kg	600 mm	6 kNm

Weights [see pg. 11]

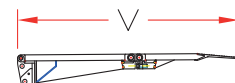
ALU / ALU	
1100 mm	425 kg
1400 mm	440 kg

For use at the side doors



Fitting dimensions

ARM		940	1020
K max.		1350	1410
C max.		680	705
C min.		study req.	
CO max.		670	720
M	at C max.	study req.	
M	at C min.	study req.	
V max		1100	1400



Technical specifications

Lift frame	Custom made lift frame, adapted for side mounting on vehicle chassis
Cylinders	<ul style="list-style-type: none"> • 1 central lift cylinder • 2 double acting tilt cylinders (partially hydraulic deployment of the platform)
Platform shape	Conical, wedged platform
Automatic tilt at ground level	Yes, hydraulic
Platform material	Alu / alu
Standard platform depths	1100 - 1400 mm
Standard platform widths	1400 mm. Other widths (max. 1600 mm) on request (S261)
Lift arm lengths	940 - 1020 mm
Lift arm widths	580 mm
Standard control unit	Exterior control box with joystick, turn button safety switch, and battery isolator switch (S008.BT)

Special hydraulic applications



6



→ Hydraulic ramp for vans, trucks, trailers and semi-trailers

DH-AC.10 • 1000 kg

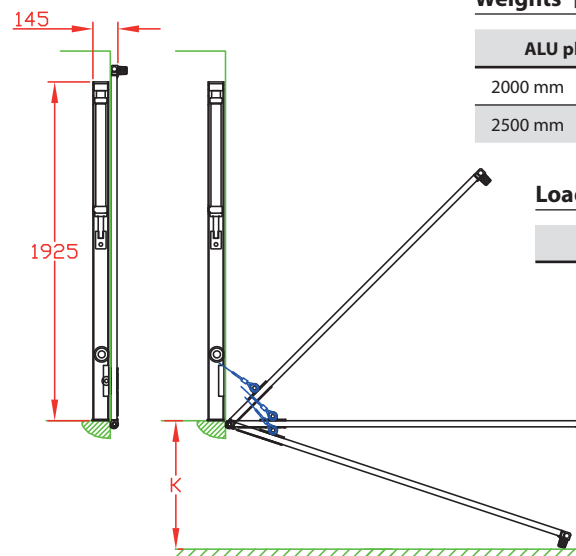


The DH-AC is a **light weight hydraulic ramp** with aluminium platform, and superior aesthetic finish. As the closing mechanism is incorporated in 2 columns mounted in the door aperture of the vehicle body, no parts of the closing mechanism (springs, cylinders,...) are visible from the outside.

The DH-AC is traditionally used for the transport of horses or other animals. More recently, it is also being used for other applications, such as the collection of waste bins, the transport of garden equipment (small tractors, lawn mowers, ...).

For the transport of live animals, columns made of stainless steel are available (option S630).

Light hydraulic ramp with aluminium platform



Weights [see pg. 11]

ALU platform	
2000 mm	210 kg
2500 mm	235 kg

Load capacity

CAP
1000 kg

Technical specifications

Lift frame	2 vertical columns of 90x90 mm, mounted in the door aperture, against the frame of the body
Cylinders	2 cylinders (1 in each column)
Platform material	Aluminium, natural mill finish 3 hinge blocks, to be welded or bolted to the rear cross member of the vehicle floor
Standard platform depths	2000 - 2500 mm Other depths available on request (S203)
Standard platform widths	Variable per increments of 5 mm
Standard control unit	Exterior control box with joystick, turn button safety switch, and battery isolator switch (S008.BT)



→ Hydraulic ramp for trucks, trailers and semi-trailers

DH-AR... • 3000 - 16000 kg



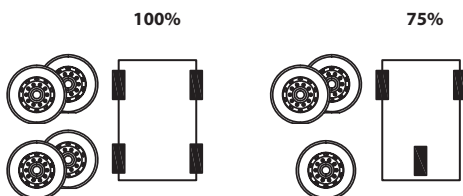
The **DH-AR1...** are basic ramps with a **non-articulated steel platform**.

The **DH-AR2...** are ramps with a **longer, articulated platform**. The top and bottom platform sections are linked with **stabilisers**, so that they work synchronised, as a pair.

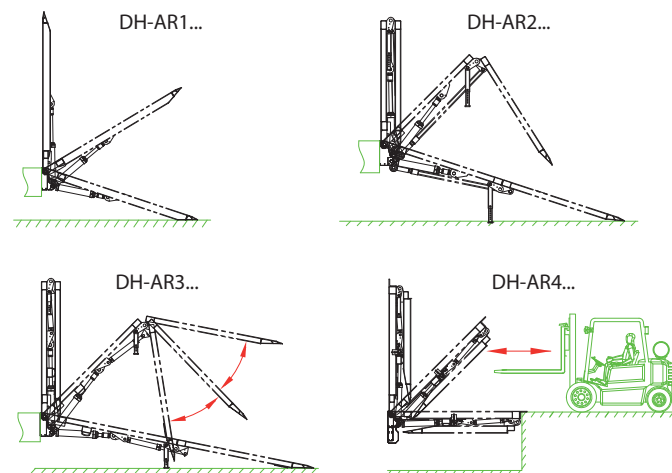
The **DH-AR3/4...** also have a **longer, articulated platform**. But the top and bottom platform sections are linked with **2 additional hydraulic cylinders**, so that both platform sections can be operated independently. The DH-AR4... can be used as bridge at the loading dock.

Load capacity

CAP
3000 kg
5000 kg
9000 kg
16000 kg



Heavy duty hydraulic ramp with steel platform



Technical specifications

Lift frame	140 x 80 mm tube mounted at the rear cross member of the loading floor
Cylinders AR1...	2 tilt cylinders
Cylinders AR2...	2 tilt cylinders + 2 stabilisers
Cylinders AR3 / 4...	2+2 tilt cylinders
Hydraulic stabilising legs	Available as an option (S540)
Standard platform depths	AR1...: 2500 mm AR2-3-4...: 2000 + 2000 mm Other depths on request (S203)
Standard platform width	Variable per increments of 5 mm
Standard control unit	Exterior control box with turn buttons, turn button safety switch, and battery isolator switch



→ Cantilever lift for trucks, trailers and semi-trailers

DH-LKG.05 • 500 kg



The **DH-LKG.05** is a robust cantilever lift, designed for the **distribution of gas bottles**. It is equipped with a flat platform to give maximum stability to the gas bottles while lifting / lowering, and is available with various types of safety rails, that allow to secure the bottles in vertical position.

In order to keep the operation as simple as possible, the platform is opened / closed by hand, supported by powerful torsion springs. The reinforced steel platform offers 925x1100 mm useful loading space, and allows to handle multiple bottles during any lift / lowering cycle, up to max. 500 kg safe working load.

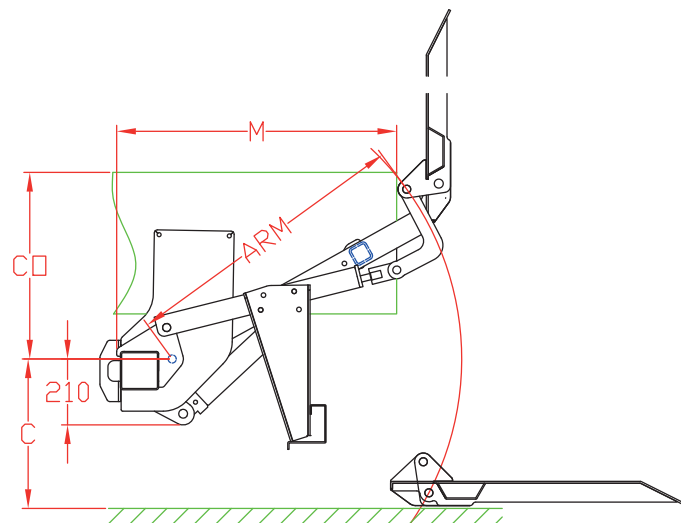
Lift capacity

CAP	CG	LM
500 kg	500 mm	2.5 kNm

Weights [see pg. 11]

STEEL platform	
925x1100	220 kg

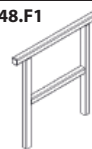
Flat platform, specially designed for gas bottles



Fitting dimensions

ARM		1000
K max.		1490
C max.		730
C min.		400
CO max.		760
M	at C max.	760
M	at C min.	975

S248.F1



S248.F2



Technical specifications

Lift frame	120 x 120 mm
Cylinders	1 central lift cylinder + 2 fixed stabilisers
Automatic ground level	Not needed, flat platform
Platform material	Steel
Standard platform dimensions	925 x 1100 mm (L x W) Other dimensions on request
Lift arm lengths	1000 mm
Lift arm width	350 mm
Standard control unit	Fixed 2-button exterior control box (S015.B)



→ Lift for refrigerated bodies on trucks, trailers, and semi-trailers

DH-IV.10 • 1000 kg



The DH-IV is designed to **load / unload hanging meat**. To unload, the meat pending from the roof-rails is pulled onto the hooks mounted on the cross-tube between the lift arms of the lift, and subsequently lowered to the ground by means of hydraulic cylinders.

The DH-IV is manufactured from **stainless steel**, conform with the regulations on health and hygiene.

The cross tube between the lift arms can be welded in a fixed position between the arms. Or it can rotate in a parallelogram configuration (option S406), so that the angle of the cross tube to the ground remains unchanged during the lift / lower movements.

Lift capacity

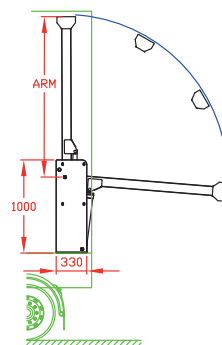
CAP
1000 kg

Weights [see pg. 11]

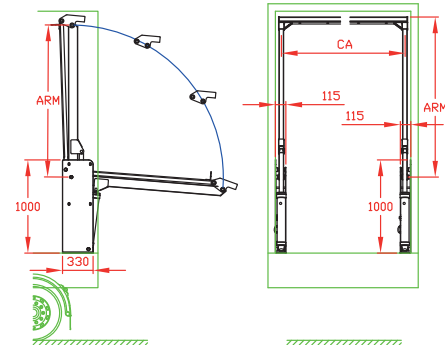
Stainless steel
standard 190 kg

Specialised in hanging meat

Standard



Option S406



Technical specifications

Lift frame	2 separate compact lift frames, to be mounted left and right of the door aperture, on the floor and against the side panel
Cylinders	2 double acting lift cylinders
Standard lift system	Fixed cross beam between the lift arms (to be welded during fitting). The angle between the cross beam and the ground changes as the lift goes up / down.
Lift system + option S406	Articulated cross beam (parallelogram) between the lift arms. The angle between the cross beam and the ground remains unchanged as the lift goes up / down.
Material	Stainless steel
Dimensions of lift arms	Length x width made to measure
Standard control unit	3-button control unit integrated in the frame of the lift (S094.3)



→ Bridge plate between truck and trailer

DH-AP • 2x1250 kg

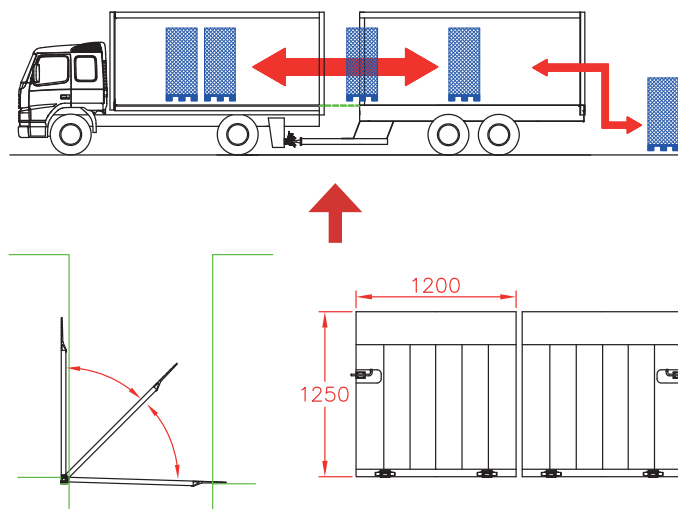


The aluminium ramps DH-AP are used for truck-trailer combinations, whereby the trailer is equipped with doors at the front side.

This **loading bridge** enables the operator to shift load from the truck to the trailer and vice versa, and to handle all the loading / unloading at the rear of the trailer, either by means of a tail lift, or at the loading dock.

The DH-AP consists of 2 hinged ramps of 1250x1200 mm, which are manipulated by hand from a vertical travel position just inside the rear doors of the truck body, to a horizontal work position between the 2 vehicles.

Loading bridge between truck and trailer



Technical specifications

Mounting interface	2x2 steel hinge blocks to be bolted or welded to the vehicle floor of the vehicle
Cylinders	<ul style="list-style-type: none"> None. The bridge plates are opened / closed manually. 2 mechanical locks to lock the platform in the closed travel position.
Platform material	Aluminium, natural mill finish
Standard platform dimensions	1250 x 1200 mm (L x W) Other dimensions on request

Load capacity

CAP
2x1250 kg

Weights [see pg. 11]

Alu platform
2x 1250x1200
2x 36 kg



→ Scissor lift for step deck trailers

DH-H • 8000 kg



The **scissor lift** DH-H has a lift capacity of 8.000 kg, and is specially designed to **load / unload the upper deck of step-deck trailers**.

The scissor itself is made at 800 mm width, but is equipped by a full-width loading table by the body builder, according to the required dimensions and surface finish.

Often, the loading floor and scissor lift deck of such semi-trailers are equipped with pneumatically lifted roller beds, for the manipulation of air-freight containers.

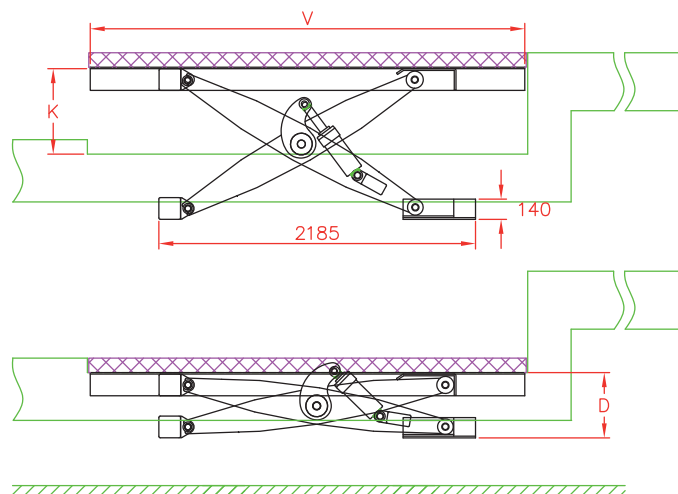
Lift capacity

CAP
8000 kg

Weights [see pg. 11]

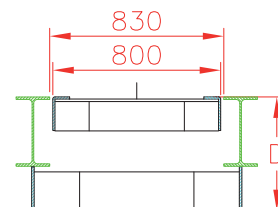
Alu platform
Scissor 850 kg

The solution for step-deck trailers



Fitting dimensions

K max.	600 mm
D min.	450 mm



Technical specifications

Lift frame	<ul style="list-style-type: none">• 1 fixed mounting tube + 1 roller bed to be mounted on the underside of the chassis I beams.• Top loading table to be manufactured by the chassis manufacturer.
Cylinders	2 heavy duty lift cylinders
Scissor material	Steel
Scissor lift dimensions	800 x 3200 mm (W x L)
Maximum lift height	600 mm
Standard control unit	2-button remote control with spiral cable (S001)

Introduction

- Today's column lift range is the result of decades of experience gathered by **DHOLLANDIA**, **SOLID LIFT**, and **CARCO**, and today brought to the market via one single sales channel.
- It comprises of a wide variety of constructions with vastly different lift mechanisms, and for a broad array of applications.
- The classifications in the next 2 pages help to distinguish between the major product groups. The illustrations in the pages after that aim to give a broad understanding of the possibilities of our range. For the fine adjustment of any of these lifts to your particular requirements, it is recommended to use the assistance of our technical-commercial staff. Please contact your national **DHOLLANDIA** distributor for further details and drawings.

Column lifts



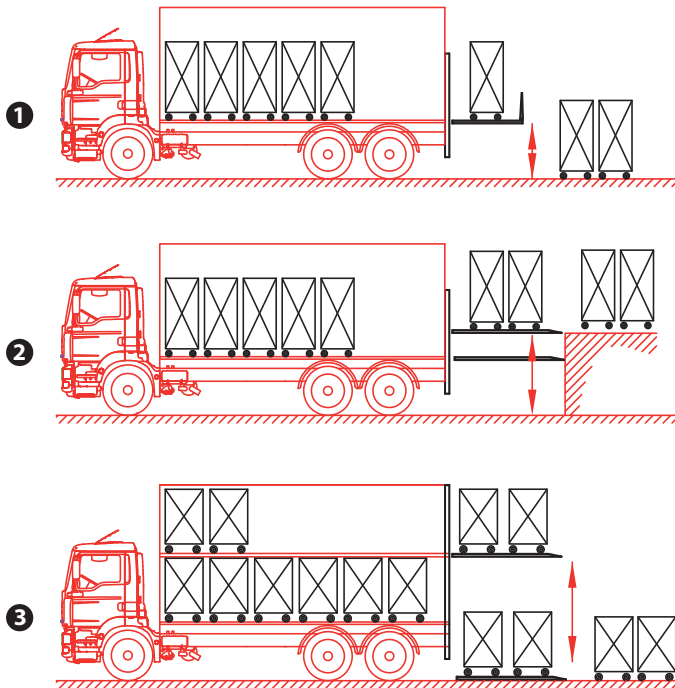
7

Classifications

1- Lifting height

When taking the maximum lifting height as discerning factor, one can distinguish between:

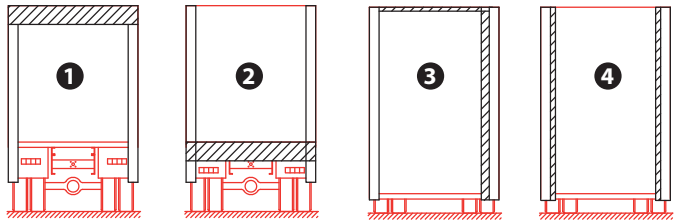
1	Single deck lifts: platform travels between the ground and the (lower) loading floor of the vehicle.
2	Intermediate lifts: platform travels between the ground and an intermediate height above the loading floor, e.g. to access a loading dock.
3	Multi deck lifts: platform travels between the ground and the 2nd, 3rd, 4th... loading floor of the vehicle. The highest achievable level is 6m above the ground.



2- Lifting technology

When considering how the platform is moved up & down, one can distinguish between:

1	DH-VB...	Operated by a single lift cylinder and a set of steel cables and pulleys. The cylinder beam is mounted horizontally at roof level.
2	DH-VO...	Operated by a single lift cylinder and a set of steel cables or chains, and pulleys. The cylinder beam is mounted horizontally at or below the vehicle floor level.
3	DH-VX...	Operated by a single lift cylinder and a set of steel cables and pulleys. The cylinder beam is mounted vertically in the right side column.
4	DH-VH...	Operated by 2 hydraulic lift cylinders mounted in the left and right side columns. No cables or chains involved.



Remark 1: for lifts with horizontal lifting systems (1 & 2), the achievable lifting height depends on the width of the lift or vehicle. For lifts with vertical lifting systems (3 & 4), the achievable lifting height depends on the height of the lift or vehicle. Consult our technical drawings for detailed information.

Remark 2: by adding specific options, these multi-functional lifts can be adapted to suit specific applications, such as the intensive distribution transport, the transport of (race) cars, the collection of waste containers, the transport of live stock, etc...

3– Mounting position of the lift

When observing where the lift is mounted on the vehicle, distinction can be made between following types:

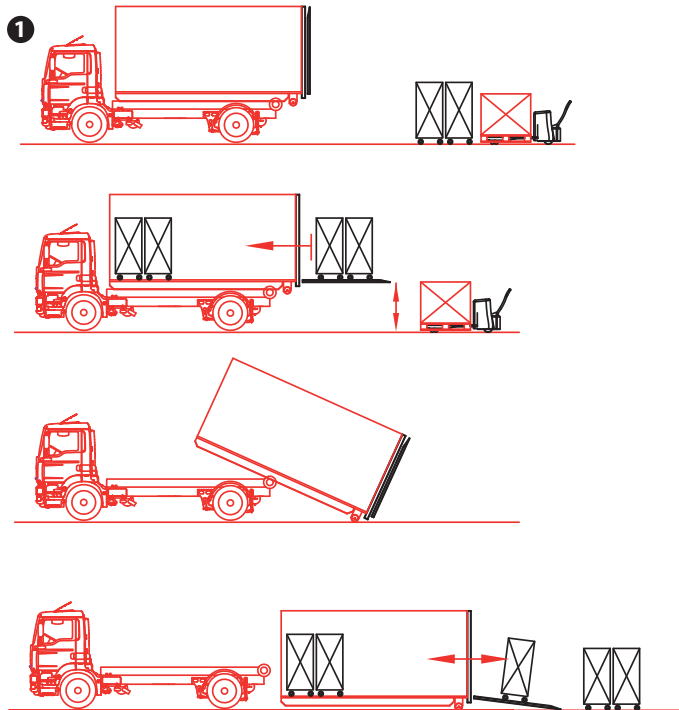
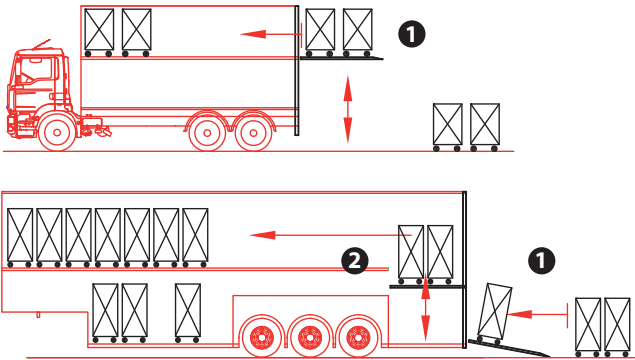
1	External lift	Is mounted at the rear or at the side of the vehicle body, and is stowed vertically behind the vehicle body in its travel position. This lift has all functions LIFT / LOWER and CLOSE / OPEN.
2	Internal lift	Is mounted inside the vehicle body. When it is stowed in its travel position, it forms an integral part of one of the vehicle floors. When used, it works as a moving deck. This lift only has the functions LIFT / LOWER, no tilt.

4– Specials and option packages

For specific industries or applications, the technical requirements are to a large extent standard through the entire industry, and are joined by option packages.

For example, option packages are offered for GAS BOTTLE lifts (robust heavy duty platforms with special safety rails to secure the gas bottles on the platform against falling); for RACE CAR lifts (long, extended and reinforced platforms with a foldable or retractable ramp); and for CONTAINER lifts (very short lift columns + long lift runners) [see 1 below].

Of course, a long option list enables DHOLLANDIA to adjust every column lift to the particular requirements of each customer.





→ Column lift for trucks, trailers & semi-trailers

DH-VO...K1 • 500 - 1500 kg



Single deck column lift with lower beam



The DH-VO...K1 offers **maximum all-round efficiency** to the operator. A wide choice of options allows to adapt this lift to **meet specific customer requirements** and special applications such as:

- Hinged ramps at the side & rear edges of the platform
- Manual or hydraulic closure
- Various types of safety rails
- Lifts for the distribution of gas bottles, mounted at the rear and the side
- Lifts for tipper vehicles: dump over and dump through

Lift capacity

DH-VO.07.K1	DH-VO.15.K1
500 kg	1000 kg
750 kg	1500 kg

Technical specifications (old name = DH-VOC)

Lift system	Lower beam: operated by a single lift cylinder mounted in a beam at the vehicle floor level, and a set of chains & pulleys
Open / Close	<ul style="list-style-type: none"> • Manual closure supported by torsion bars • Hydraulic closure as an option (OVH004)
Standard platform	<ul style="list-style-type: none"> • Flat platform with fixed leading edge • Roll-stops & ramps as an option
Platform material	<ul style="list-style-type: none"> • Reinforced steel platform, or • Light-weight aluminium platform; or • Meshed steel platform, for improved fuel efficiency (OVP 509)
Standard platform depths	<ul style="list-style-type: none"> • DH-VO.07.K1: 900 - 1100 - 1300 mm • DH-VO.15.K1: 1000 - 1250 - 1500 mm • Other platform sizes on request
Standard control unit	Exterior control box with joystick, turn button safety switch, and battery isolator switch (S008.BT)



→ Column lift for trucks, trailers & semi-trailers

DH-VB.15.E1 • 1000 - 1500 kg



Single deck column lift with upper beam

The DH-VB.15.E1 is a robust lift designed to work in “**hostile environment**” conditions (e.g. with regular dock loading), and to suit the most demanding applications in the transport business, such as **supermarket & food distribution**.

Many options are available to adapt the lift to meet specific customer requirements and applications, for instance:

- Hinged ramps at the side & rear edges of the platform
- Manual or hydraulic closure
- Various types of safety rails
- Special adaptations for the locking gear of barn doors
- Shunt stops to vertically descend the platform in a suitable position, that allows to reverse the vehicle into the loading dock without damaging the lift columns and platform.

Technical specifications (old name = DH-VB4)

Lift system	<ul style="list-style-type: none"> • Overhead beam: operated by a single lift cylinder mounted in a beam at the vehicle roof level, and a set of steel ropes & pulleys • Reinforced lift columns 100x100 mm
Open / Close	<ul style="list-style-type: none"> • Manual closure supported by torsion bars • Hydraulic closure as an option (OVH004)
Standard platform	<ul style="list-style-type: none"> • Flat platform with fixed leading edge • Roll-stops & ramps as an option
Platform material	<ul style="list-style-type: none"> • Reinforced steel platform, or • Light-weight aluminium platform
Standard platform depths	1200 mm Other platform sizes on request
Standard control unit	Exterior control box with joystick, turn button safety switch, and battery isolator switch (S008.BT)



→ Column lift for trucks, trailers & semi-trailers

DH-VX.10.E9 • 750 - 1000 kg



Loading dock heights up to 1.9 m

The DH-VX.10.E9 is a **full-aluminium** column lift (aluminium platform; alu columns and lift runners).

The construction with **2 tilt-cylinders** is designed to operate longer platforms, and allows to tilt the platform to different angles other than the 90° horizontal or open position.

The lift system incorporates the facility to **elevate the platform above the loading floor** of the vehicle, so that it becomes possible for lower vehicles to get quick and direct access to higher loading docks, and thus speed up loading / unloading.

Technical specifications (old name = DH-VXA)

Lift system	<ul style="list-style-type: none"> 1 lift cylinder mounted vertically in the right side column, plus a steel cable crossing at roof level for the actuation of the left lift runner Columns and lift runners in aluminium
Open / Close	<ul style="list-style-type: none"> 2 tilt cylinders The platform orientation is adjustable at any position from the exterior controls
Standard platform	<ul style="list-style-type: none"> Flat platform with fixed leading edge Roll-stops & ramps as option
Platform material	Light-weight aluminium platform
Standard platform depths	1800 - 2000 mm Other platform sizes on request
Standard control unit	Exterior control box with joystick, turn button safety switch, and battery isolator switch (S008.BT)



→ Column lift for trucks, trailers & semi-trailers

DH-VB... • 750 - 2500 kg



Multi-deck column lift with upper beam

The DH-VB... are specially designed to load and unload vehicles with multiple or moving loading floors.

The DH-VB... have a cylinder beam at vehicle roof level. These **heavy duty lifts** are suitable for vehicles with **insufficient ground clearance to mount a DH-VO lower beam lift** (too low vehicle floor level); and for applications with a considerable **risk that harmful products could penetrate in the cylinder beam** (e.g. animal transport).

Upper beam lifts are available in various models, and for different capacity classes. All exterior lifts are equipped with 2 tilt cylinders, the platform orientation is adjustable from the exterior controls. The most common lift models are:

DH-VB25.D2 • 1000 - 2500 kg (old name = DH-VB3)

- Basic model, robust & heavy duty, multi-functional
- Height of cylinder beam = 230 mm
- Platform = steel frame + aluminium infill profiles
- Lifting height to approx. 1450 mm under the roof level (*)

DH-VBV • 1000 - 2500 kg

- Special adaption for the transport of live animals
- Height of the cylinder beam = 150 mm
- Platform = full aluminium platform
- Lifting height to approx. 1205 mm under the roof level (930 mm with option OVF001) (*)

DH-VB10.D3 • 750 - 1000 kg (old name = DH-VB5A)

- Light weight execution
- Height of the cylinder beam = 180 mm
- Platform = steel frame + aluminium infill profiles
Full aluminium platform as option (OVP004)
- Lifting height to approx. 540 mm under the roof level (290 mm with option OVF001) (*)

(*) See remark 1 on pg. 139 reg. the achievable lifting height.



→ Column lift for trucks, trailers & semi-trailers

DH-VO... • 1000 - 4000 kg



Multi-deck column lift with lower beam

The DH-VO... are specially designed to load and unload vehicles with multiple or moving loading floors.

The DH-VO... have a **cylinder beam at or below the vehicle floor level**, so that the **passage height through the aperture of the vehicle body remains intact**. It is however not suitable for vehicles with a very low floor level.

Lower beam lifts are available in various models and geometries, and for different capacity classes. All exterior lifts are equipped with 2 tilt cylinders, the platform orientation is adjustable from the exterior controls. The most common lift models are:

DH-VO25.D2.A10 • 1000 - 2500 kg (old name = DH-VO4)

- Basic model, robust & heavy duty, multi-functional
- Compact cylinder beam = 360x237 mm (LxH)
- Platform = steel frame + aluminium infill profiles
- Lifting height to max. 2970 mm above the ground or 1150 mm under the roof level (1)
- Shrouds and platform seals on the outside (2)

DH-VO25.D2.B10 • 1000 - 2500 kg (old name = DH-VO3)

- Advanced model, allowing additional options (such as OVP404 = double manual toe-guards on the platform and the cylinder beam without electrical detection), and offering extra lifting height
- Larger cylinder beam = 480x237 mm (LxH)
- Platform = steel frame + aluminium infill profiles
- Lifting height to max. 3130 mm above the ground or 1150 mm under the roof level (1)
- Shrouds and platform seals on the outside (2)

(1) See remark 1 on pg. 139 reg. the achievable lifting height. If the platform lifts higher than 1150 mm under the roof, the roof needs to accommodate that the lift runners pass beyond the roof.

(2) Internal shrouds and seals possible with models ...C10 and ...D10.



→ Column lift for trucks, trailers & semi-trailers

Vertical lift cylinder(s)



Multi-deck column lift with vertical lift cylinder(s)

The DH-VX & DH-VH... have 1 (VX) or 2 (VH) **lift cylinder(s) mounted vertically** in the lift column(s). As these lifts have no horizontal cylinder beam at all, they are ideal for vehicles where the free passage height through the body aperture is crucial (very low loading floor + very slim cross member at the roof). E.g. **semi-trailers with independent axle suspension**.

Often, these lifts are used as **internal lifts** or moving decks: platforms with a fixed horizontal platform orientation (no tilt cylinders), travelling internally between the lower and upper deck. These internal lifts are often combined with a second, external lift (a multi-deck lift, a slider lift, or a hydraulic ramp).

DH-VX & DH-VH are available in various models and geometries. The most common lift models are:

DH-VX.25 • 1000 - 2500 kg

- Basic model, robust & heavy duty, multi-functional
- Single lift cylinder mounted in the right side column, plus a set of cables crossing at roof level for the actuation of the left side lift runner
- Platform = steel frame + aluminium infill profiles
- Lifting height to approx. 1400 mm under the roof level (*)

DH-VH.40 • 1000 - 4000 kg

- Fully hydraulic system with 2 lift cylinders (one in each lift column), no cables or chains involved
- Platform = steel frame + aluminium infill profiles
- Lifting height to approx. half the vehicle body height (suitable for 2 decks with identical height)

(*) See remark 1 on pg. 139 reg. the achievable lifting height.



→ Column lift for trucks, trailers & semi-trailers

DH-VO5.20 • 1000 - 2000 kg



Removal lift up to 6 m height

The DH-VO5 is equipped with a unique system of **telescopic lift columns**, enabling the platform to travel from flat on the ground, beyond the roof, to a **level at max. 6 m above the ground** (2) in one continuous movement.

The lift is equipped with hydraulic stabilising legs, to guarantee optimum safety when working at extreme heights.

The product offer includes a basic version for general applications, and a **REMOVAL execution** (option OVU002). The latter is specially designed for the transport and delivery of furniture, and for removal activities.

Standard execution • 1000 - 2000 kg (1)

- Lower beam lift with telescopic lift runners, steel cables and a set of pulleys
- Hydraulic closure with 2 tilt cylinders
- Platform = steel + aluminium infill profiles
- Lifting height to approx. 6 m above the ground (2)
- Independent hydraulic stabilising legs
- Standard side safety rails with integrated lift / lower controls
- Roof construction

Additional equipment on OVU002 Removal execution

- Lateral shrouds & platform seals
- Extension of the platform to max. 3000 mm
- 4-sides demountable safety rails (fully CE compliant on fall protection)
- 2-button wander lead with plugs mounted on the platform surface
- Facility to incline the platform down below horizontal angle into ramp-position

(1) Risk analysis on fall protection required to comply with CE regulations.
(2) See remark 1 on pg. 139 reg. the achievable lifting height.



→ Column lift for containers & demountable bodies

Container lifts



For containers & draw bar couplings

Container lifts are equipped with **short columns and extended lift runners**, so that no part of the mechanism protrudes below the under side of the vehicle body, when the platform is stored in its travel position.

As a consequence, these containers and demountable bodies can be **deposited on the ground**, without any obstruction or damage to the column lift. In most cases, the platform can be opened, and the container accessed while it is standing on the ground.

The short columns are also ideal for mounting on **trucks with a draw-bar trailer**, to provide sufficient clearance between the columns and the draw bar.

Container lifts are available in various models and for different capacity classes. The most common are:

DH-VMC3 • 750 - 1000 kg

- Lower beam lift with chains and pulleys
- Telescopic lift runners
- Hydraulic closure with 2 tilt cylinders
- Alu platform 1600 - 1800 mm

DH-VBC2 • 1000 - 2500 kg

- Upper beam lift with steel cables and pulleys
- Short columns and long lift runners
- Hydraulic closure with 2 tilt cylinders
- Platform depth 2000 - 2700 mm

DH-VH38 • 1000 - 3000 kg

- Fully hydraulic lift with 2 vertical lift cylinders
- Short columns and long lift runners
- Hydraulic closure with 2 tilt cylinders
- Platform depth 2000 - 2700 mm



Side mounted applications

DH-VO.15.K1

750 - 1000 kg
1 or 2 sides,
Platforms up to max.
7500 mm long



Various types of column lifts can be adapted, or are specially designed to be mounted to the side of the vehicle. An important share of these lifts are used for the distribution of gas bottles, or for the delivery of beverages.

Consult your national **DHOLLANDIA** distributor for further assistance and detailed information.

DH-VZ.03

300 kg
Gas bottle lift

DH-VX.10.E9

750 - 1000 kg
For lifting heights up
to 1.9 m (above vehicle
floor level)



DH-VZC.05

500 kg
Gas bottle lift integrated
in the vehicle floor

DH-VH.07.H1

500 - 750 kg
Lift for hospital beds,
medical vehicles



DH-VMC.10.H1

750 - 1000 kg
Container lift, mounted
laterally at the front of a
step-deck trailer (at the
5th wheel area)

DH-VX.25.D2

1000 - 2000 kg
Multi-deck lift, side
mounted, with reinforced
platform



DH-AC.10

1000 kg
Hydraulic ramp with
aluminium platform,
side mounted to serve
as stage

www.dhollandia.com

