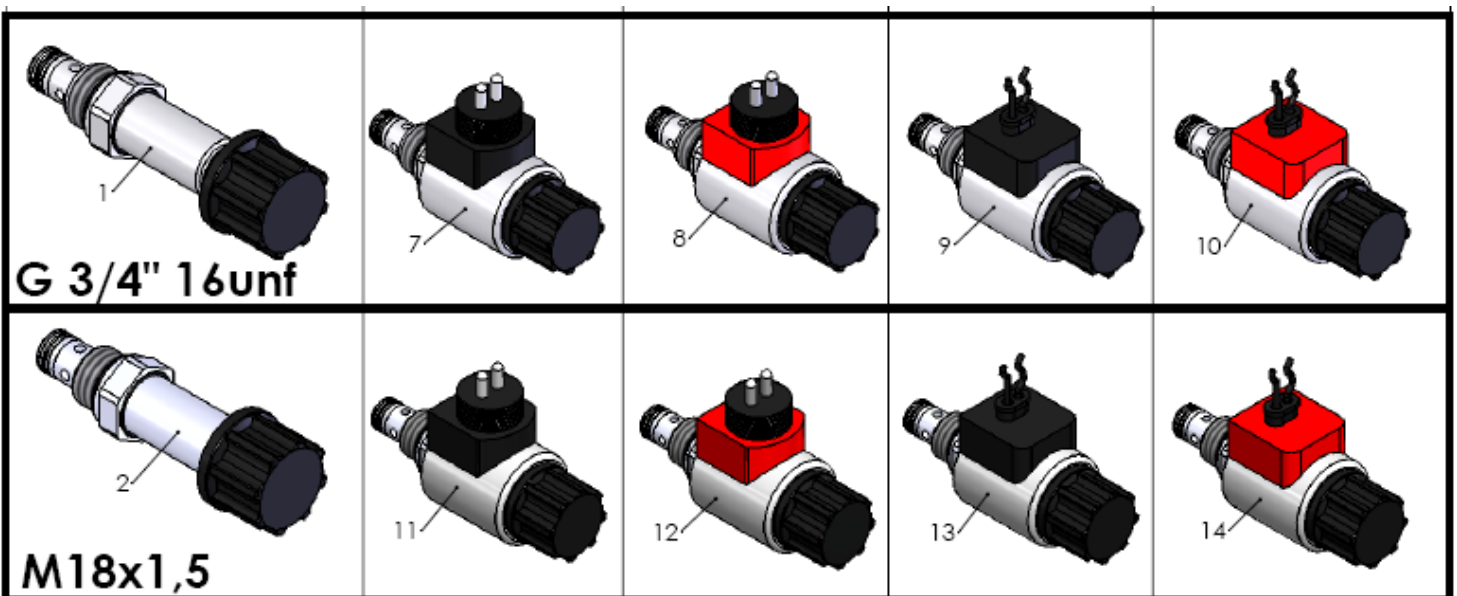
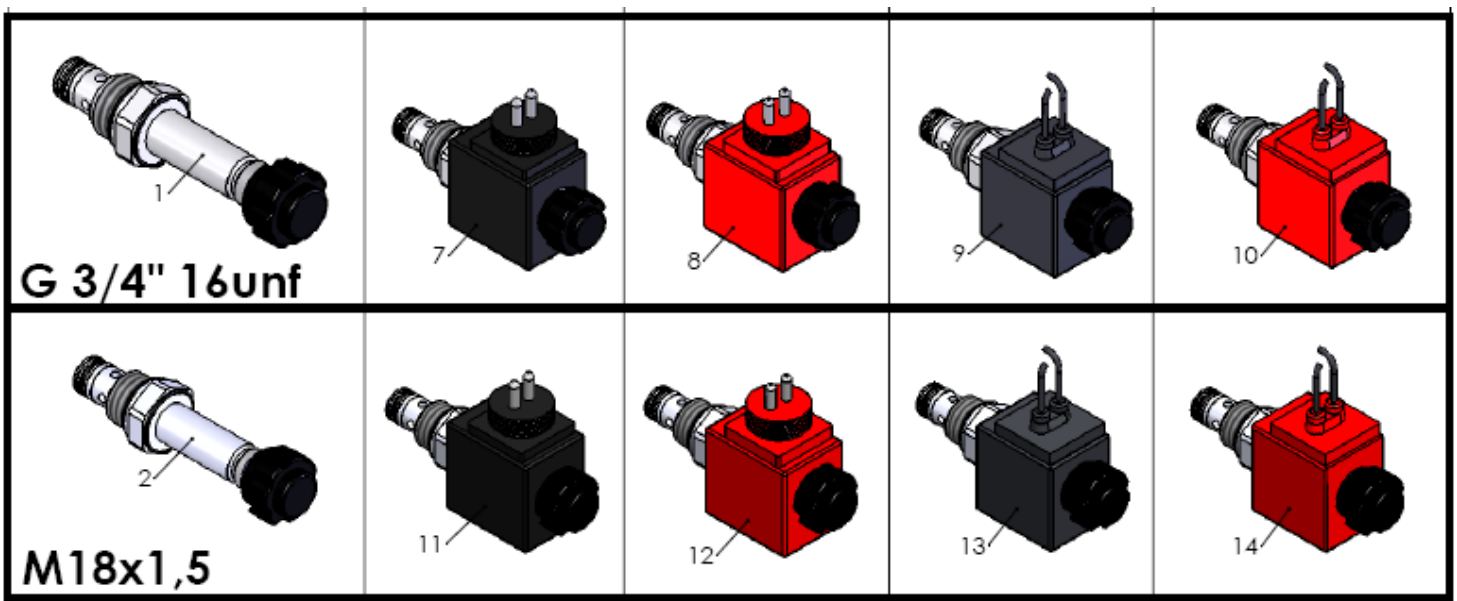


S1 - Introduction:

From 2010 onwards, the single acting electrovalves type V031 / V036 / V037 and their -H variant are being used with 2 different cavities: G 3/4" UNF (= historical type) and M18x1.5 (= newly added to the range).

For repair, maintenance, and spare parts orders, it is important that you can recognize both types, as understandably both types of valves are **NOT INTERCHANGEABLE**.



S2 - Recognition

The electrovalves type **V031 / V036 / V037** can be identified as follows.



Shiny silver cartridge → 3/4" UNF

= **V031**

+ coil = **V036** (24V) or **V037** (12V)



Dark grey cartridge → M18x1.5

= **V133**

+ coil = **V133.24** (24V) or **V133.12** (12V)

The—H equivalent, forming the electrovalves type **V031.H / V036.H / V037.H** can be identified as follows.



- Shiny silver cartridge without print → 3/4" UNF
- Black cartridge with silver hex. collar → 3/4" UNF
- With print of part n° V031.H → 3/4" UNF

= **V031.H**

+ coil = **V036.H** (24V) or **V037.H** (12V)



Fully Black cartridge → M18x1.5

Silver cartridge with print of part n° V133.H → M18x1.5

= **V133**

+ coil = **V133.24.H** (24V) or **V133.12.H** (12V)

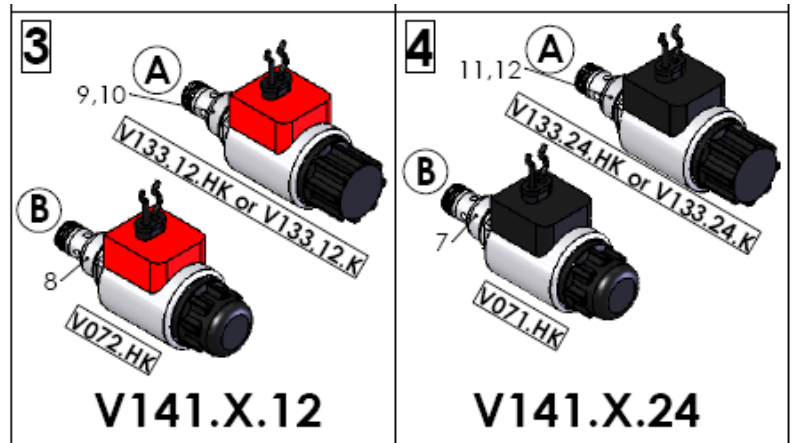
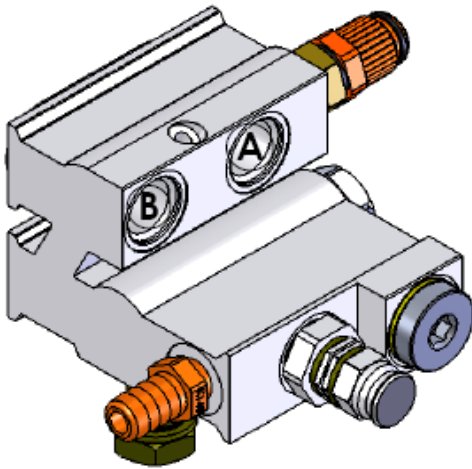


Print of part N°

§3 - Use

The valves V133.. with cavity M18x1.5 are used :

1. on the **valve blocks V141.X** used on the compact power packs for the tail lifts DH-L* 500-1000 kg with MECH.X wiring.

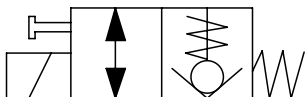


2. on the **hydraulic cylinders of the DH-LM.10 500-1000kg**, but in 2011 they will be used also on the cylinders on the rest of the tail lift range (1500kg +). The cylinders with cavity M18x1.5 are marked by a groove milled into the cylinder stem, between the valve port and the grease nipple.



All other applications of single acting valves have the V031 / V036 / V037 range with 3/4" UNF.

If you would require further information on this topic, please don't hesitate to contact us.



Plug & screw connection

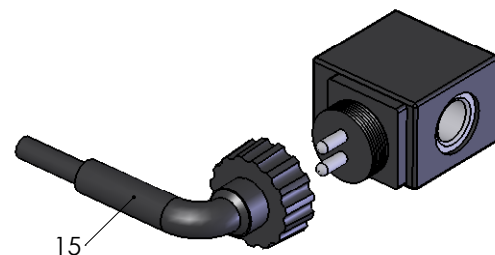
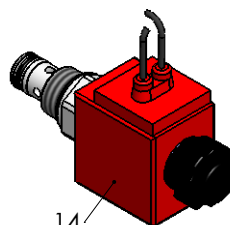
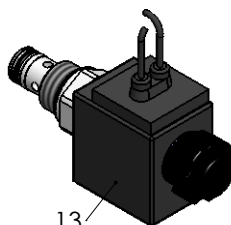
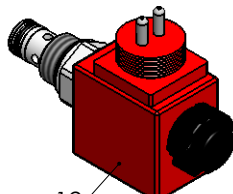
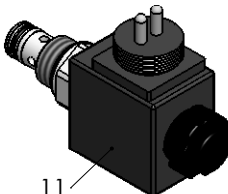
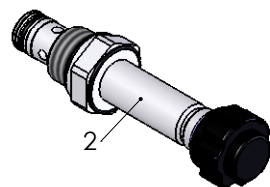
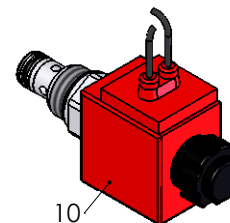
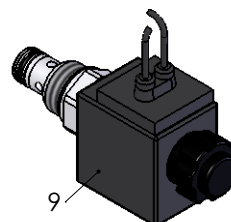
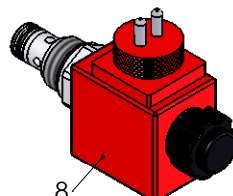
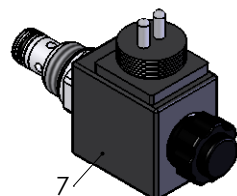
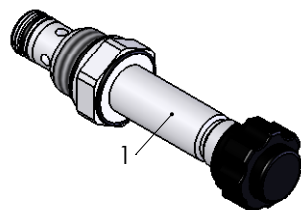
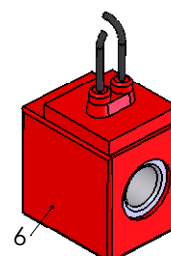
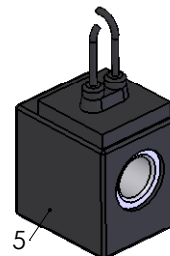
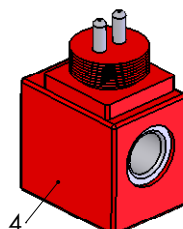
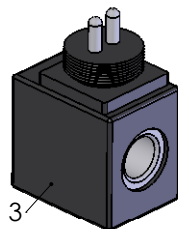
Cable connection

24V

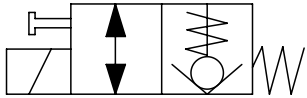
12V

24V

12V



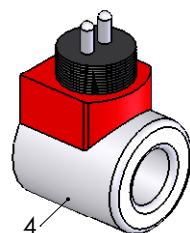
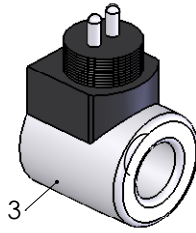
Pos	Code	Description
1	V031	Cartridge without coil SA
2	V133	Cartridge without coil SA DHO
3	E0240	Solenoid screw connection 24V
4	E0241	Solenoid screw connection 12V
5	E0242	Solenoid cable connection 24V
6	E0243	Solenoid cable connection 12V
7	V036	Safety valve SA 24V + E240
8	V037	Safety valve SA 12V + E241
9	V036.K	Safety valve SA 24V + E242
10	V037.K	Safety valve SA 12V + E243
11	V133.24	Safety valve SA 24V
12	V133.12	Safety valve SA 12V
13	V133.24.K	Safety valve SA 24V (K)
14	V133.12.K	Safety valve SA 12V (K)
15	E0086	Cable safety valve Costal



Plug & screw connection

24V

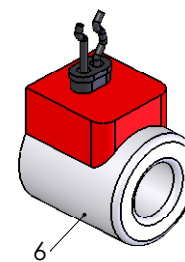
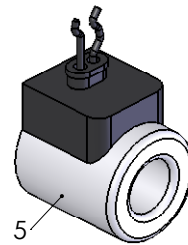
12V



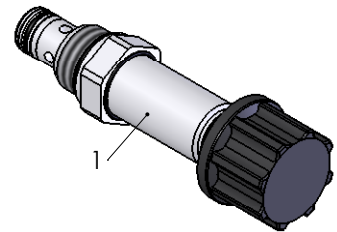
Cable connection

24V

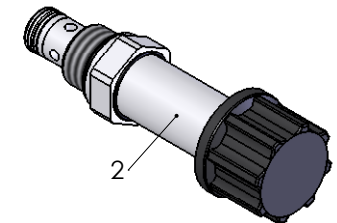
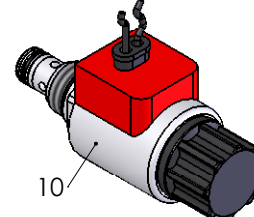
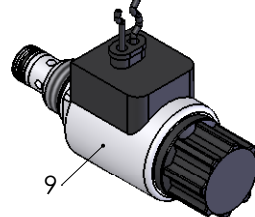
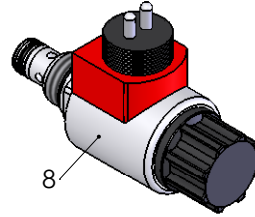
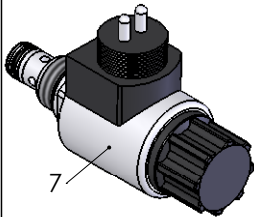
12V



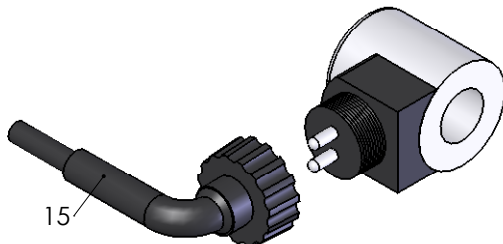
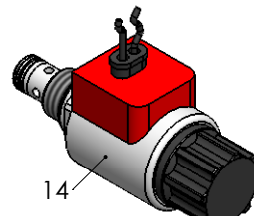
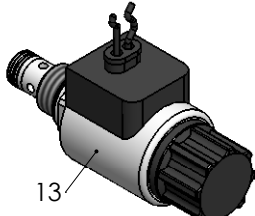
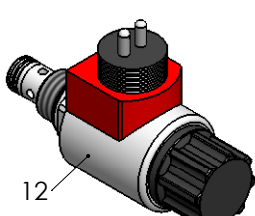
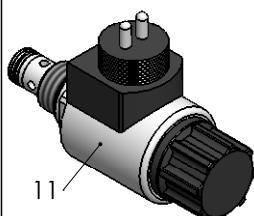
Pos	Code	Description
1	V031.H	Cartridge without coil SA HYDAC
2	V133.H	Cartridge without coil SA DHO - HYDAC
3	E0240.H	Solenoid screw connection 24V HYDAC
4	E0241.H	Solenoid screw connection 12V HYDAC
5	E0242.H	Solenoid cable connection 24V HYDAC
6	E0243.H	Solenoid cable connection 12V HYDAC
7	V036.H	Safety valve SA 24V Hydac
8	V037.H	Safety valve SA 12V Hydac
9	V036.HK	Safety valve SA 24V + E242.H
10	V037.HK	Safety valve SA 12V + E243.H
11	V133.24.H	Safety valve SA 24V - HYDAC
12	V133.12.H	Safety valve SA 12V - HYDAC
13	V133.24.HK	Safety valve SA 24V - HYDAC(K)
14	V133.12.HK	Safety valve SA 12V - HYDAC(K)
15	E0086	Cable safety valve Costal



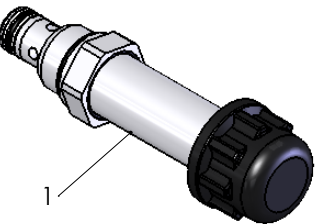
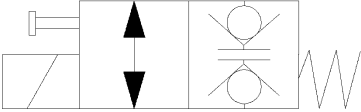
G 3/4" 16unf



M18x1,5



Description Sales Article: _____
Safety valve DA 03



Pos	Code	Description
1	V070.H	Cartridge without coil DA HYDAC
2	E0240.H	Solenoid screw connection 24V HYDAC
3	E0241.H	Solenoid screw connection 12V HYDAC
4	E0242.H	Solenoid cable connection 24V HYDAC
5	E0243.H	Solenoid cable connection 12V HYDAC
6	V071.H	Safety valve DA 24V HYDAC
7	V072.H	Safety valve DA 12V HYDAC
8	V071.HK	Safety valve DA 24V +E0242.H
9	V072.HK	Safety valve DA 12V + E0243.H
10	E0086	Cable safety valve Costal

Screw connection

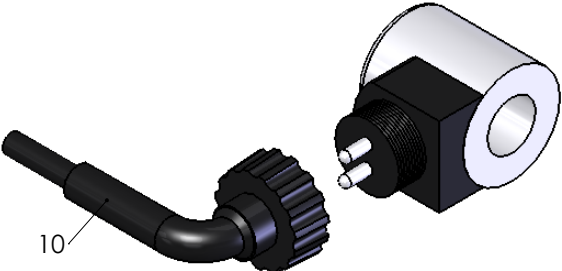
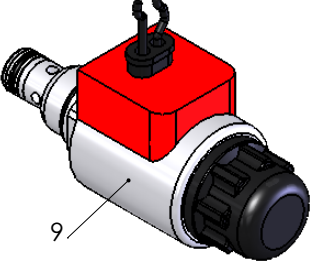
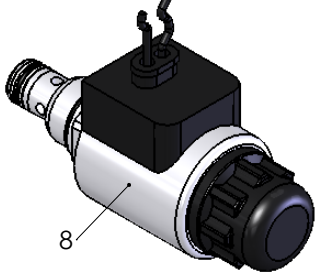
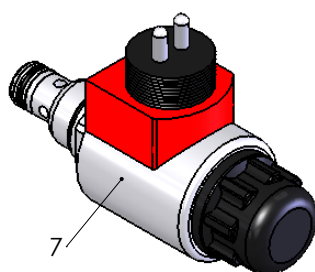
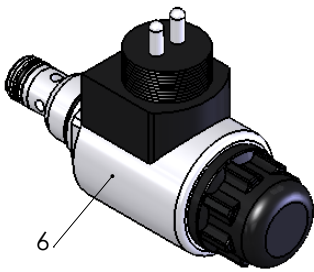
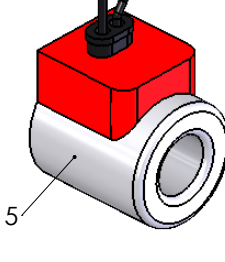
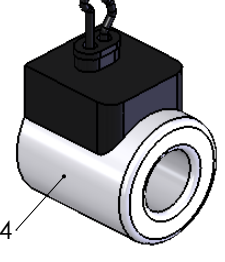
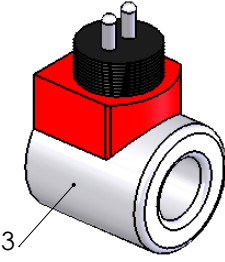
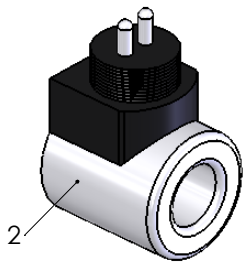
Cable connection

24V

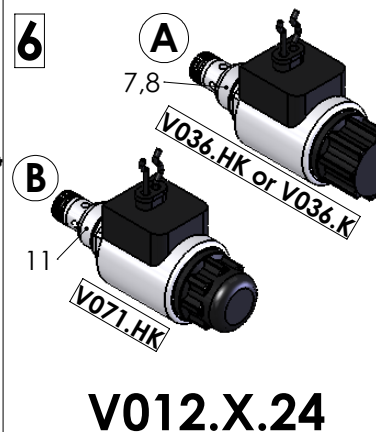
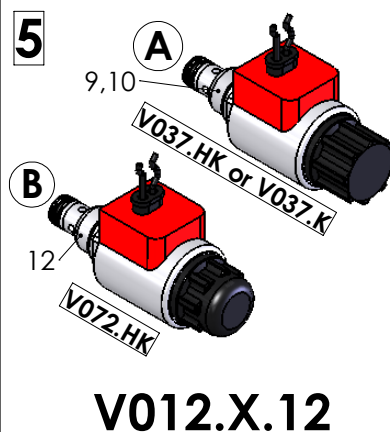
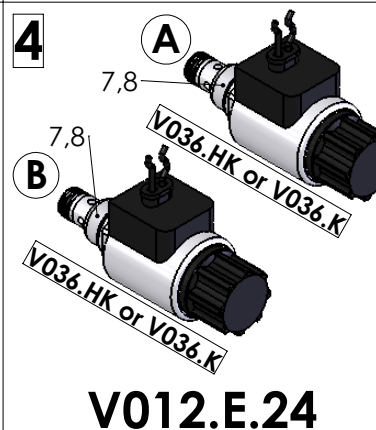
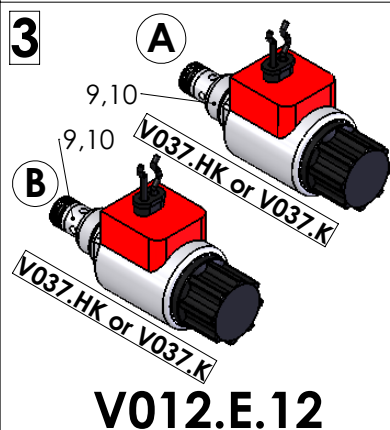
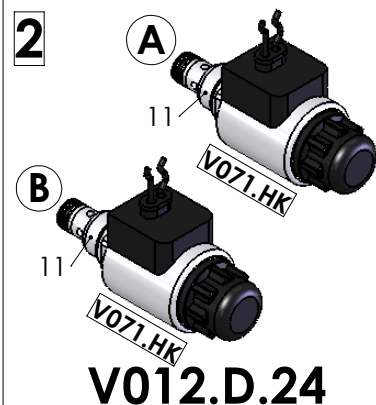
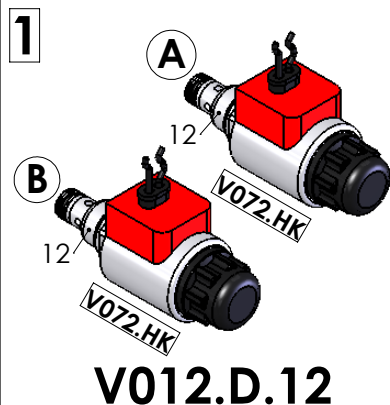
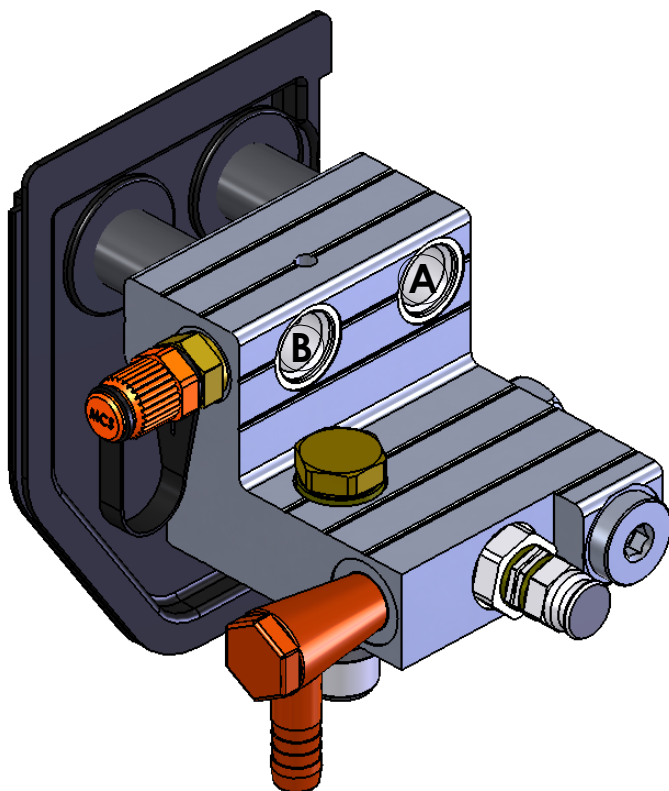
12V

24V

12V

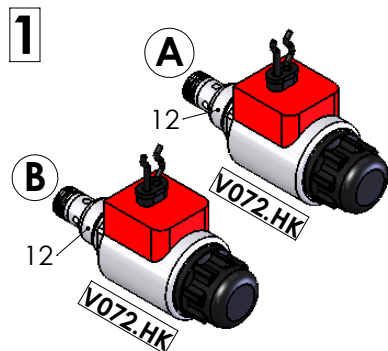
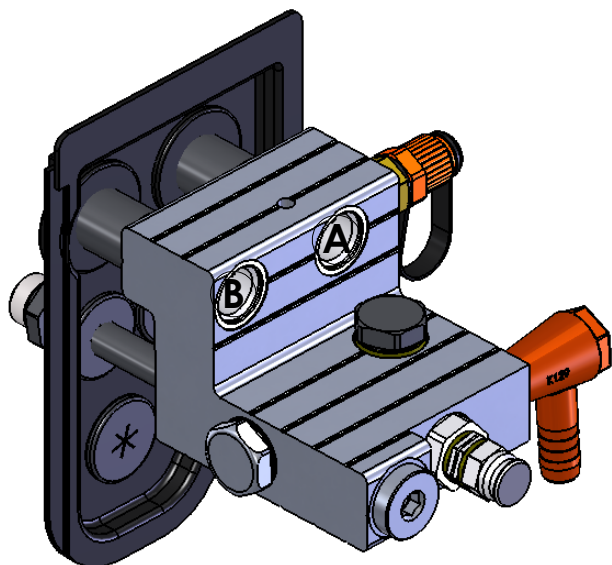


Pos	Code	Description
1	V012.D.12	Logical valve compl. V72.K 12V
2	V012.D.24	Logical valve compl. V71.K 24V
3	V012.E.12	Logical valve compl. V37.K 12V
4	V012.E.24	Logical valve compl. V36.K 24V
5	V012.X.12	Logical valve compl. V072.HK + V037.HK 12V
6	V012.X.24	Logical valve compl. V071.HK + V036.HK 24V
7	V036.K	Safety valve SA 24V + E242
8	V036.HK	Safety valve SA 24V + E242.H
9	V037.K	Safety valve SA 12V + E243
10	V037.HK	Safety valve SA 12V + E243.H
11	V071.HK	Safety valve DA 24V + E0242.H
12	V072.HK	Safety valve DA 12V + E0243.H

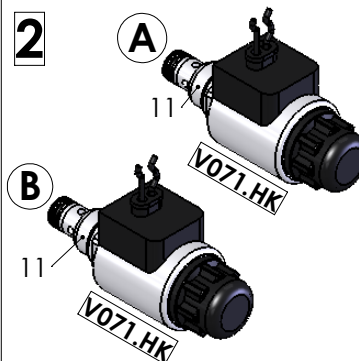


INF-VAL-V096

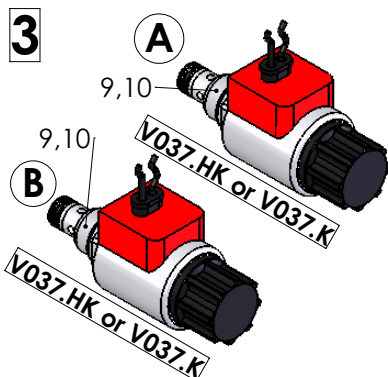
Pos	Code	Description
1	V096.D.12	Logical valve compl. V72.K 12V
2	V096.D.24	Logical valve compl. V71.K 24V
3	V096.E.12	Logical valve compl. V37.K 12V
4	V096.E.24	Logical valve compl. V36.K 24V
5	V096.X.12	Logical valve compl. V072.HK + V037.HK 12V
6	V096.X.24	Logical valve compl. V071.HK + V036.HK 24V
7	V036.K	Safety valve SA 24V + E242
8	V036.HK	Safety valve SA 24V + E242.H
9	V037.K	Safety valve SA 12V + E243
10	V037.HK	Safety valve SA 12V + E243.H
11	V071.HK	Safety valve DA 24V + E0242.H
12	V072.HK	Safety valve DA 12V + E0243.H



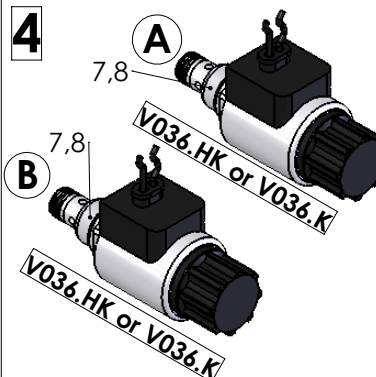
V096.D.12



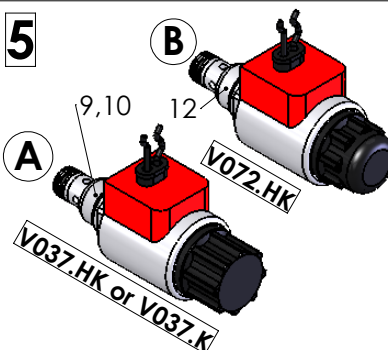
V096.D.24



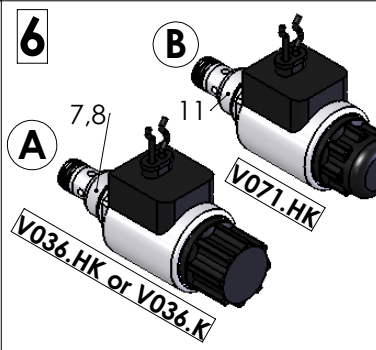
V096.E.12



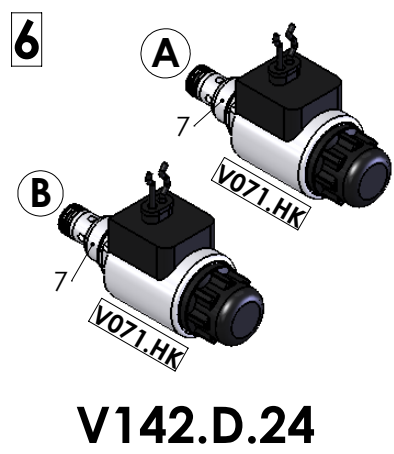
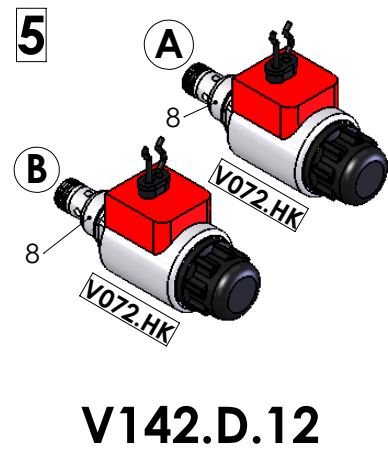
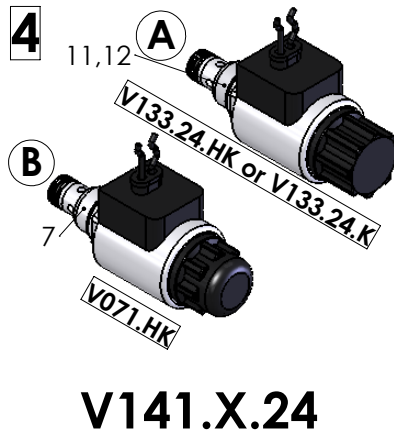
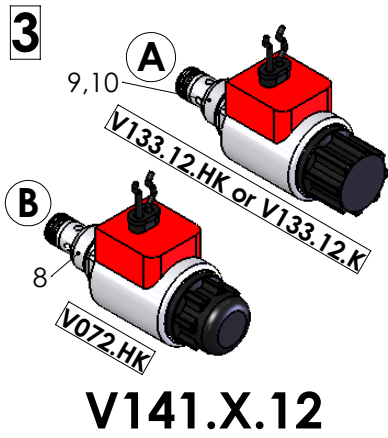
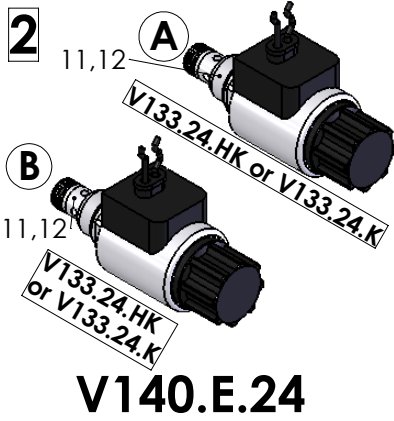
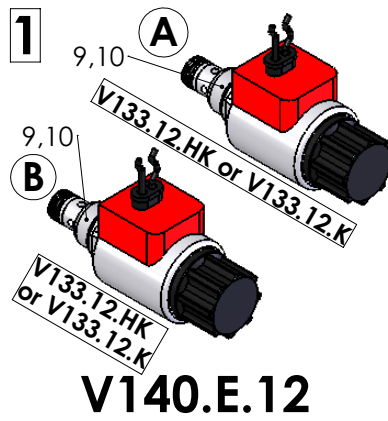
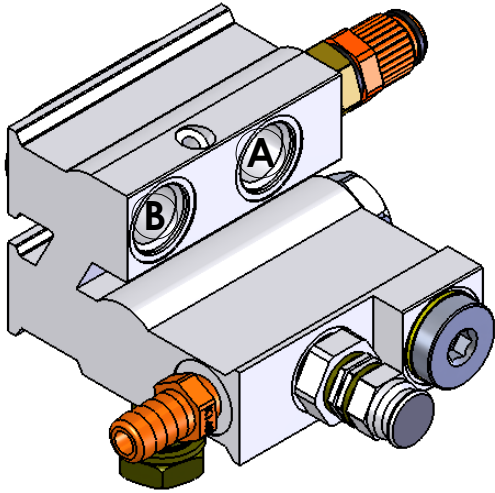
V096.E.24



V096.X.12



V096.X.24



Pos	Code	Description
1	V140.E.12	Logical valve compl. V133.K 12V
2	V140.E.24	Logical valve compl. V133.K 24V
3	V141.X.12	Logical valve compl. V133/V072.HK
4	V141.X.24	Logical valve compl. V133/V071.HK
5	V142.D.12	Logical valve compl. V072.HK 12V
6	V142.D.24	Logical valve compl. V071.HK 24V
7	V071.HK	Safety valve DA 24V + E0242.H
8	V072.HK	Safety valve DA 12V + E0243.H
9	V133.12.HK	Safety valve SA 12V - HYDAC(K)
10	V133.12.K	Safety valve SA 12V (K)
11	V133.24.HK	Safety valve SA 24V - HYDAC(K)
12	V133.24.K	Safety valve SA 24V (K)

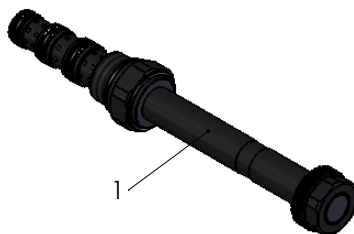
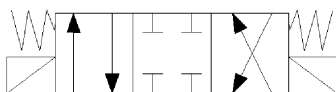
Main Group: _____

Information

Sub Group: _____

Controle valves information

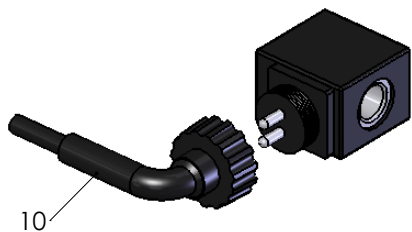
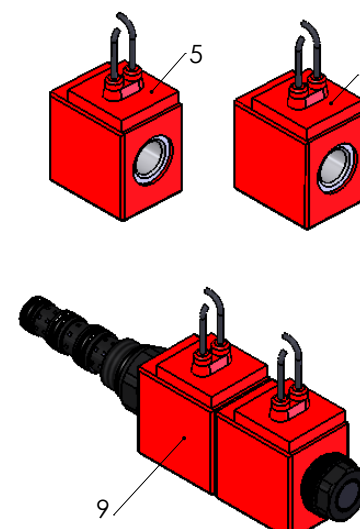
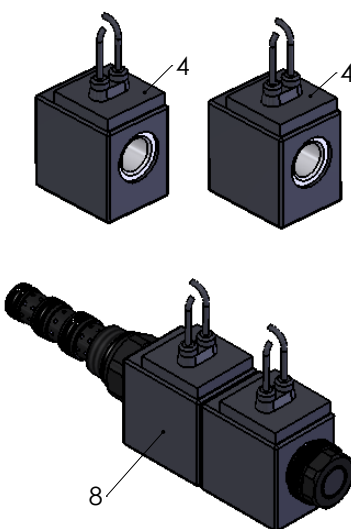
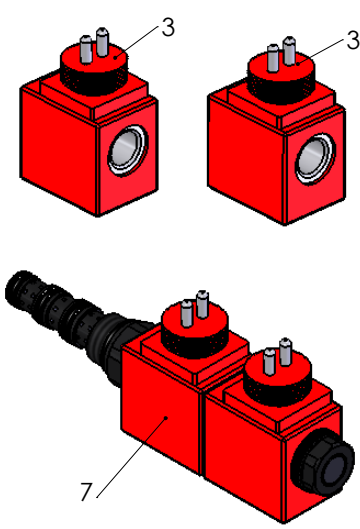
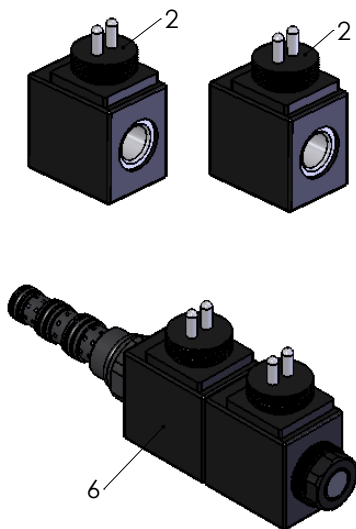
Description Sales Article: _____

Valve closed 4/3 WAY


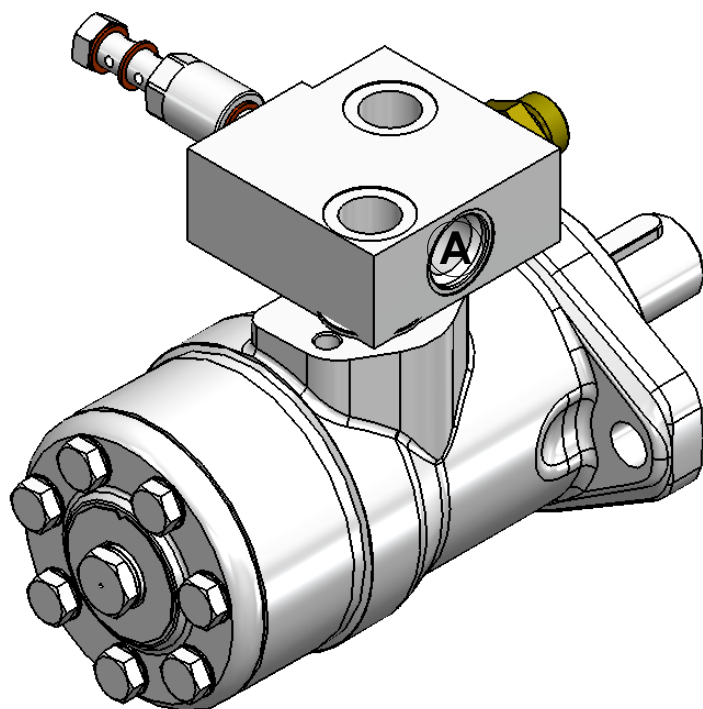
Sales Article: _____

INF-VAL-05

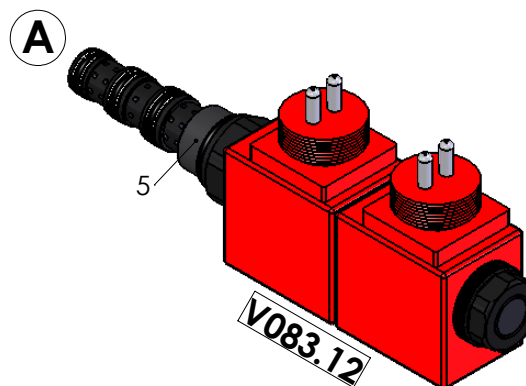
Pos	Code	Description
1	V083	Cartridge closed 4/3WAY - 3/4"
2	E0240	Solenoid screw connection 24V
3	E0241	Solenoid screw connection 12V
4	E0242	Solenoid cable connection 24V
5	E0243	Solenoid cable connection 12V
6	V083.24	Valve closed 4/3WAY 3/4" 24V
7	V083.12	Valve closed 4/3WAY 3/4" 12V
8	V083.24.K	Valve closed 4/3WAY 3/4" 24V -K
9	V083.12.K	Valve closed 4/3WAY 3/4" 12V -K
10	E0086	Cable safety valve Costal

Screw connection
Cable connection
24V
12V
24V
12V


Pos	Code	Description
1	V151.L.12	Valve hydro motor -L- 12V
2	V151.R.12	Valve hydro motor -R- 12V
3	V151.L.24	Valve hydro motor -L- 24V
4	V151.R.24	Valve hydro motor -R- 24V
5	V083.12	Valve closed 4/3WAY 3/4" 12V
6	V083.24	Valve closed 4/3WAY 3/4" 24V

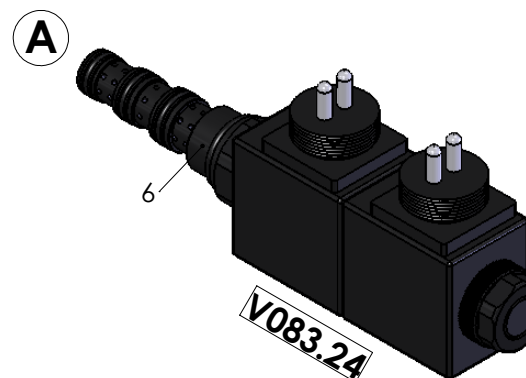


1,2



V151.L.12 or V151.R.12

3,4



V151.L.24 or V151.R.24